

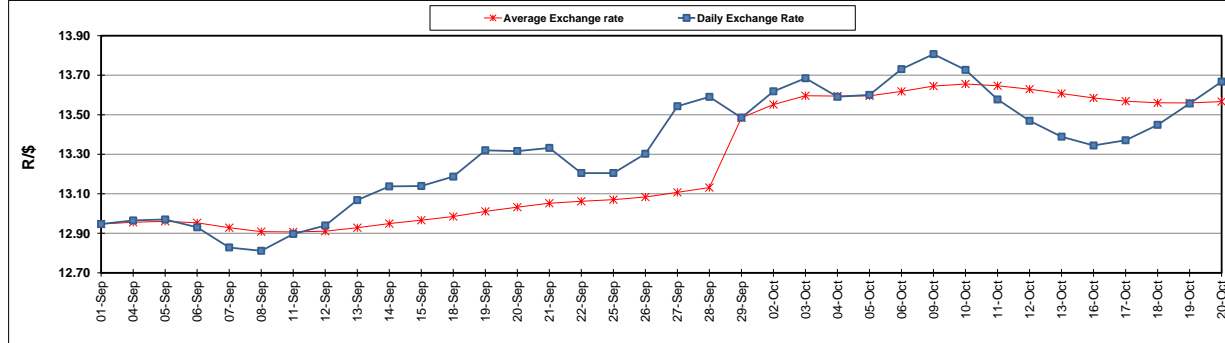
	PETROL 95 ULP	PETROL 93 ULP & LRP	DIESEL 0.05%	DIESEL 0.005%	ILL. PAR.
GAUTENG PUMP PRICE (SA c/l) AS FROM 04/10/2017	1 401.000	1 374.000	-	-	-
WHOLESALE PRICE (SA c/l) AS FROM 04/10/2017	-	-	1 212.330	1 217.730	771.088
SINGLE NATIONAL MAXIMUM RETAIL PRICE	-	-	-	-	992.000
BASIC FUEL PRICE - 20/10/2017 (SA c/l)	621.368	606.953	620.701	629.178	619.602
PRESS RELEASE CONTRIBUTION TO BFP 04/10/2017 - 20/10/2017 (SA c/l)	615.070	598.070	600.630	606.030	600.128
UNIT OVER/(UNDER) RECOVERY (SA c/l) - 20/10/2017	(6.298)	(8.883)	(20.071)	(23.148)	(19.474)
AVERAGE BASIC FUEL PRICE 29/09/2017 - 20/10/2017	611.119	595.025	613.990	623.497	609.583
AVERAGE UNIT OVER/(UNDER) RECOVERY 29/09/2017 - 20/10/2017	(1.487)	(1.643)	(21.235)	(25.342)	(16.767)

### ANALYSIS MOVEMENT OF AVERAGE OVER/(UNDER) RECOVERY

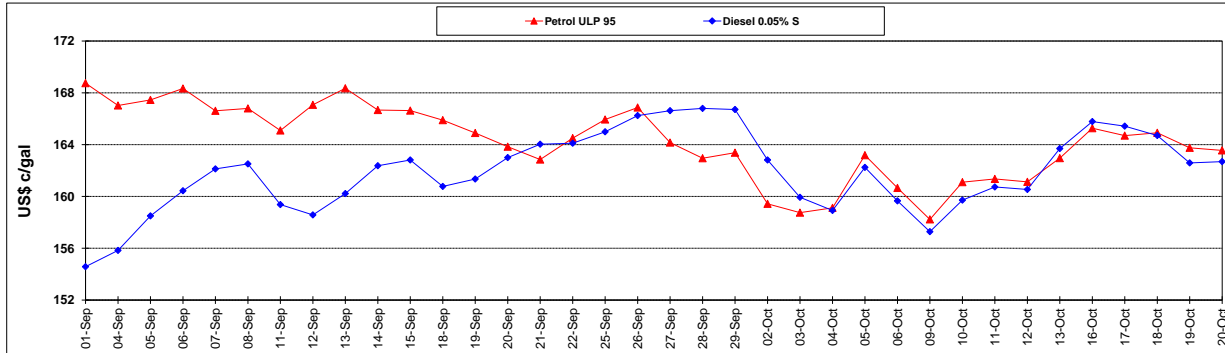
	PETROL 95	PETROL 93	DIESEL 0.05%	DIESEL 0.005%	ILL. PAR.
- MOVEMENT IN INTERNATIONAL PRODUCT PRICES	18.109	17.437	(1.548)	(5.350)	2.779
- MOVEMENT IN EXCHANGE RATE	(19.595)	(19.079)	(19.687)	(19.992)	(19.546)
AVERAGE UNIT OVER/(UNDER) RECOVERY 29/09/2017 - 20/10/2017	(1.486)	(1.642)	(21.235)	(25.342)	(16.767)

**R/\$ EXCHANGE RATE - (R/\$ 13.6673- 20/10/2017)**

### EXCHANGE RATE USED IN BASIC FUEL PRICE



### INTERNATIONAL PRODUCT PRICES OF BASKET USED IN BASIC FUEL PRICE



### BASIC FUEL PRICE IN SA CENTS PER LITRE

