

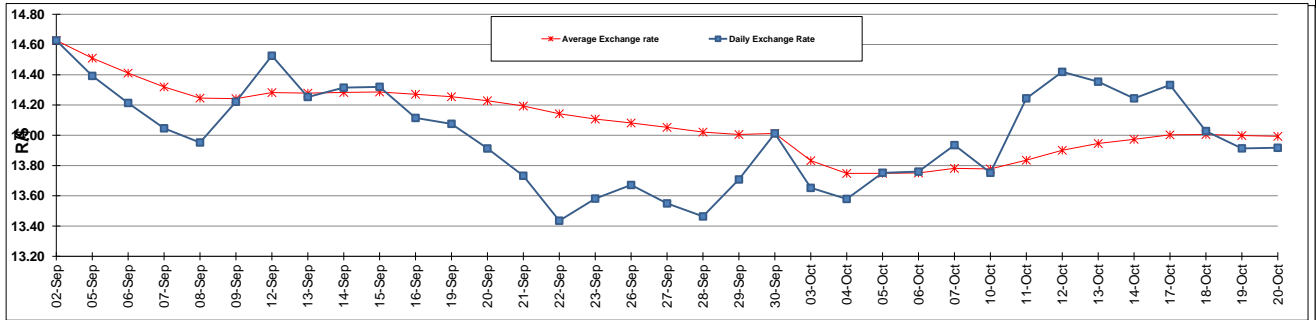
	PETROL 95 ULP	PETROL 93 ULP & LRP	DIESEL 0.05%	DIESEL 0.005%	ILL. PAR.
GAUTENG PUMP PRICE (SA c/l) AS FROM 05/10/2016	1 260.000	1 234.000	-	-	-
WHOLESALE PRICE (SA c/l) AS FROM 05/10/2016	-	-	1 071.870	1 075.270	669.628
SINGLE NATIONAL MAXIMUM RETAIL PRICE	-	-	-	-	858.000
BASIC FUEL PRICE - 20/10/2016 (SA c/l)	582.120	562.167	566.650	570.616	560.145
PRESS RELEASE CONTRIBUTION TO BFP 05/10/2016 - 20/10/2016 (SA c/l)	538.970	522.970	505.630	509.030	508.128
UNIT OVER/(UNDER) RECOVERY (SA c/l) - 20/10/2016	(43.150)	(39.197)	(61.020)	(61.586)	(52.017)
AVERAGE BASIC FUEL PRICE 30/09/2016 - 20/10/2016	577.595	561.600	566.130	569.382	562.583
AVERAGE UNIT OVER/(UNDER) RECOVERY 30/09/2016 - 20/10/2016	(47.225)	(47.430)	(65.100)	(64.952)	(58.855)

### ANALYSIS MOVEMENT OF AVERAGE OVER/(UNDER) RECOVERY

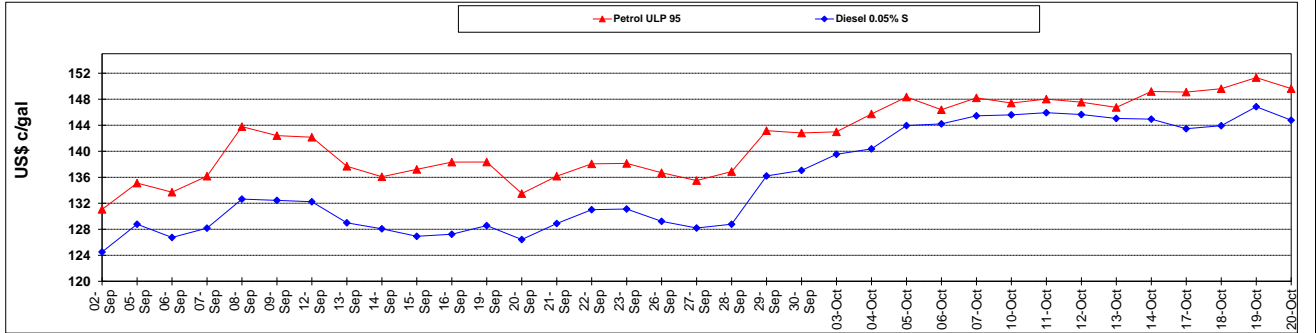
	PETROL 95	PETROL 93	DIESEL 0.05%	DIESEL 0.005%	ILL. PAR.
- MOVEMENT IN INTERNATIONAL PRODUCT PRICES	(47.749)	(47.940)	(65.614)	(65.469)	(59.366)
- MOVEMENT IN EXCHANGE RATE	0.524	0.510	0.514	0.517	0.511
AVERAGE UNIT OVER/(UNDER) RECOVERY 30/09/2016 - 20/10/2016	(47.225)	(47.430)	(65.100)	(64.952)	(58.855)

### R/\$ EXCHANGE RATE - (R/\$13.9175 - 20/10/2016)

#### EXCHANGE RATE USED IN BASIC FUEL PRICE



#### INTERNATIONAL PRODUCT PRICES OF BASKET USED IN BASIC FUEL PRICE



#### BASIC FUEL PRICE IN SA CENTS PER LITRE

