

UPDATE OF THE BASIC FUEL PRICE

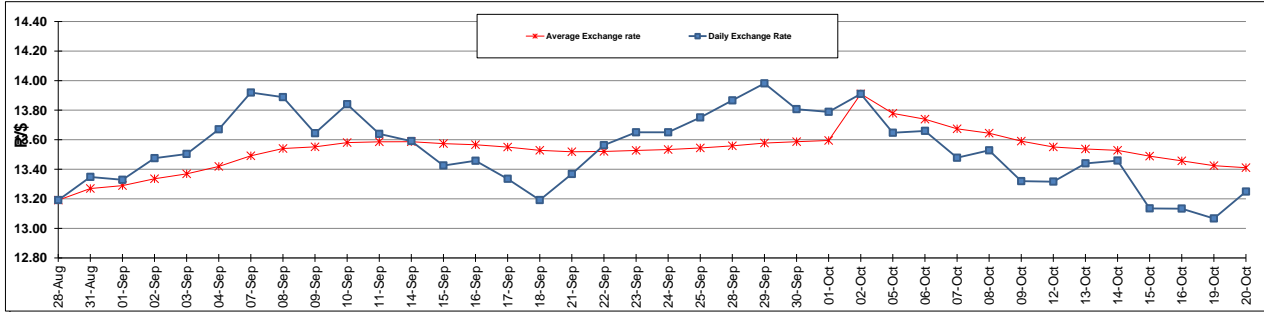
	PETROL 95 ULP	PETROL 93 ULP & LRP	DIESEL 0.05%	DIESEL 0.005%	ILL. PAR.
GAUTENG PUMP PRICE (SA c/l) AS FROM 07/10/2015	1,261.000	1,230.000	-	-	-
WHOLESALE PRICE (SA c/l) AS FROM 07/10/2015	-	-	1,093.970	1,100.370	711.828
SINGLE NATIONAL MAXIMUM RETAIL PRICE	-	-	-	-	914.000
BASIC FUEL PRICE - 20/10/2015 (SA c/l)	525.990	511.477	525.033	531.373	521.612
PRESS RELEASE CONTRIBUTION TO BFP 07/10/2015 - 20/10/2015 (SA c/l)	582.870	561.870	565.630	572.030	554.128
UNIT OVER/(UNDER) RECOVERY (SA c/l) - 20/10/2015	56.880	50.393	40.597	40.657	32.516
AVERAGE BASIC FUEL PRICE 02/10/2015 - 20/10/2015	567.496	551.515	553.553	559.068	546.806
AVERAGE UNIT OVER/(UNDER) RECOVERY 02/10/2015 - 20/10/2015	14.451	10.816	(0.154)	1.193	(4.216)

ANALYSIS MOVEMENT OF AVERAGE OVER/(UNDER) RECOVERY

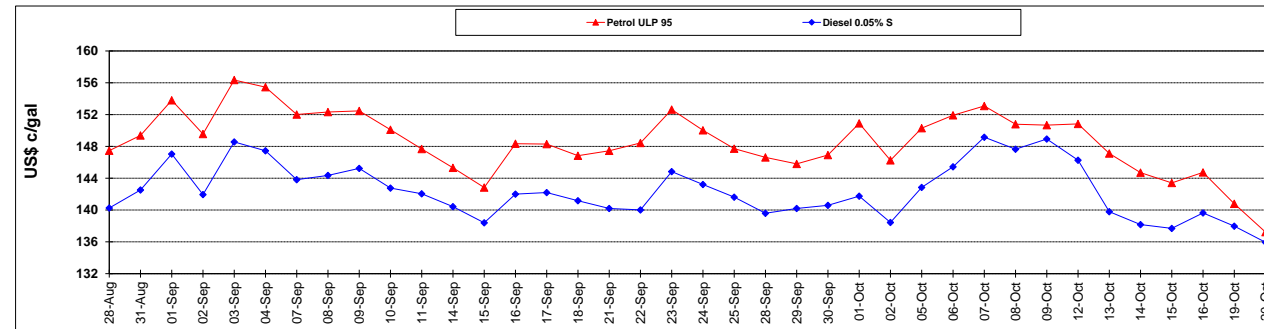
	PETROL 95	PETROL 93	DIESEL 0.05%	DIESEL 0.005%	ILL. PAR.
- MOVEMENT IN INTERNATIONAL PRODUCT PRICES	6.665	3.250	(7.749)	(6.478)	(11.718)
- MOVEMENT IN EXCHANGE RATE	7.786	7.567	7.595	7.671	7.502
AVERAGE UNIT OVER/(UNDER) RECOVERY 02/10/2015 - 20/10/2015	14.451	10.816	(0.154)	1.193	(4.216)

R/\$ EXCHANGE RATE - (R/\$ 13.2488 - 20/10/2015)

EXCHANGE RATE USED IN BASIC FUEL PRICE



INTERNATIONAL PRODUCT PRICES OF BASKET USED IN BASIC FUEL PRICE



BASIC FUEL PRICE IN SA CENTS PER LITRE

