

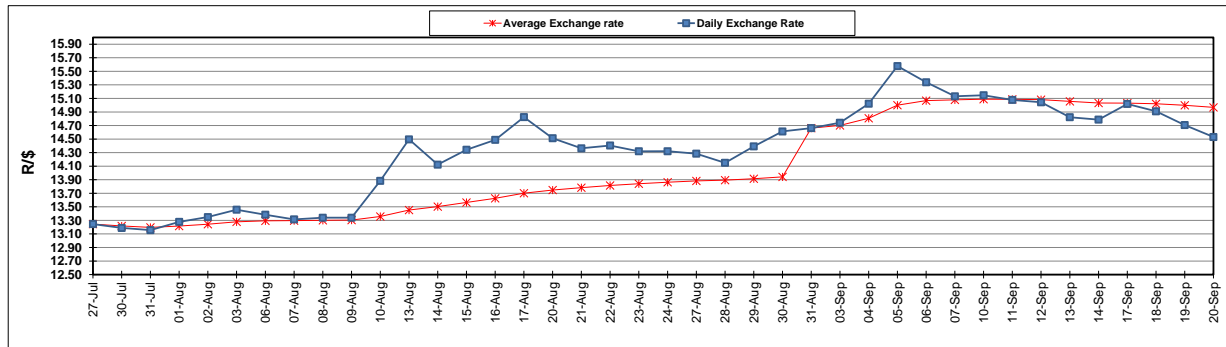
	PETROL 95 ULP	PETROL 93 ULP & LRP	DIESEL 0.05%	DIESEL 0.005%	ILL. PAR.
GAUTENG PUMP PRICE (SA c/l) AS FROM 05/09/2018	1 608.000	1 586.000	-	-	-
WHOLESALE PRICE (SA c/l) AS FROM 05/09/2018	-	-	1 440.830	1 445.230	953.088
SINGLE NATIONAL MAXIMUM RETAIL PRICE	-	-	-	-	1 233.000
BASIC FUEL PRICE - 20/09/2018 (SA c/l)	836.257	823.401	876.037	880.747	868.397
PRESS RELEASE CONTRIBUTION TO BFP 05/09/2018 - 20/09/2018 (SA c/l)	751.170	739.170	767.630	772.030	780.128
UNIT OVER/(UNDER) RECOVERY - 20/09/2018 (SA c/l)	(85.087)	(84.231)	(108.407)	(108.717)	(88.269)
AVERAGE BASIC FUEL PRICE 31/08/2018 - 20/09/2018	856.261	843.467	895.860	900.629	889.459
AVERAGE UNIT OVER/(UNDER) RECOVERY 31/08/2018 - 20/09/2018	(105.111)	(104.317)	(128.230)	(128.599)	(109.331)

ANALYSIS MOVEMENT OF AVERAGE OVER/(UNDER) RECOVERY

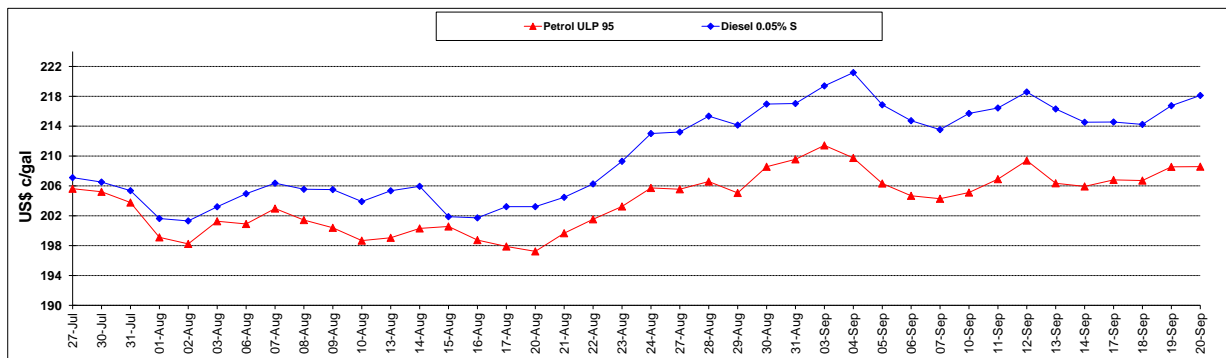
	PETROL 95	PETROL 93	DIESEL 0.05%	DIESEL 0.005%	ILL. PAR.
- MOVEMENT IN INTERNATIONAL PRODUCT PRICES	(46.480)	(46.562)	(66.888)	(66.930)	(48.427)
- MOVEMENT IN EXCHANGE RATE	(58.631)	(57.755)	(61.342)	(61.669)	(60.904)
AVERAGE UNIT OVER/(UNDER) RECOVERY 31/08/2018 - 20/09/2018	(105.111)	(104.317)	(128.230)	(128.599)	(109.331)

R/\$ EXCHANGE RATE - (R/\$14.5308 - 20/09/2018)

EXCHANGE RATE USED IN BASIC FUEL PRICE



INTERNATIONAL PRODUCT PRICES OF BASKET USED IN BASIC FUEL PRICE



BASIC FUEL PRICE IN SA CENTS PER LITRE

