

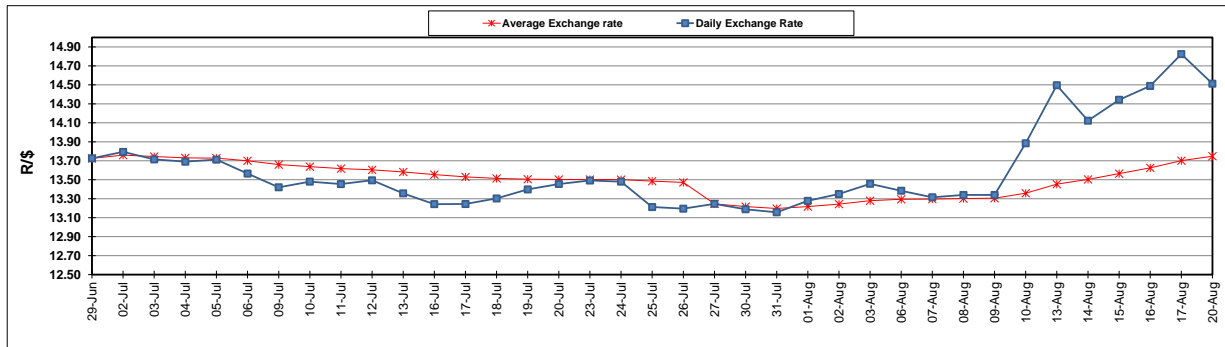
	PETROL 95 ULP	PETROL 93 ULP & LRP	DIESEL 0.05%	DIESEL 0.005%	ILL. PAR.
GAUTENG PUMP PRICE (SA c/l) AS FROM 04/08/2018	1 603.000	1 582.000	-	-	-
WHOLESALE PRICE (SA c/l) AS FROM 04/08/2018	-	-	1 440.830	1 445.230	953.088
SINGLE NATIONAL MAXIMUM RETAIL PRICE	-	-	-	-	1 233.000
BASIC FUEL PRICE - 20/08/2018 (SA c/l)	792.140	778.376	818.236	822.620	816.312
PRESS RELEASE CONTRIBUTION TO BFP 01/08/2018 - 20/08/2018 (SA c/l)	751.070	739.070	767.630	772.030	780.128
UNIT OVER/(UNDER) RECOVERY - 20/08/2018 (SA c/l)	(41.070)	(39.306)	(50.606)	(50.590)	(36.184)
AVERAGE BASIC FUEL PRICE 27/07/2018 - 20/08/2018	763.450	749.435	779.631	784.062	783.090
AVERAGE UNIT OVER/(UNDER) RECOVERY 27/06/2018 - 20/08/2018	(12.556)	(10.541)	(11.295)	(11.326)	(3.667)

ANALYSIS MOVEMENT OF AVERAGE OVER/(UNDER) RECOVERY

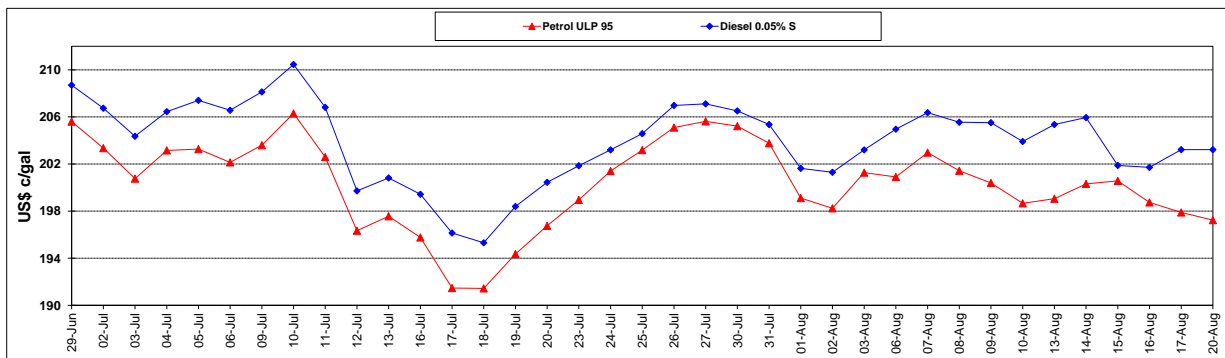
	PETROL 95	PETROL 93	DIESEL 0.05%	DIESEL 0.005%	ILL. PAR.
- MOVEMENT IN INTERNATIONAL PRODUCT PRICES	2.831	4.564	4.419	4.477	12.115
- MOVEMENT IN EXCHANGE RATE	(15.387)	(15.105)	(15.714)	(15.803)	(15.783)
AVERAGE UNIT OVER/(UNDER) RECOVERY 27/07/2018 - 20/08/2018	(12.556)	(10.541)	(11.295)	(11.326)	(3.667)

R/\$ EXCHANGE RATE - (R/\$14.5123 - 20/08/2018)

EXCHANGE RATE USED IN BASIC FUEL PRICE



INTERNATIONAL PRODUCT PRICES OF BASKET USED IN BASIC FUEL PRICE



BASIC FUEL PRICE IN SA CENTS PER LITRE

