

## UPDATE OF THE BASIC FUEL PRICE

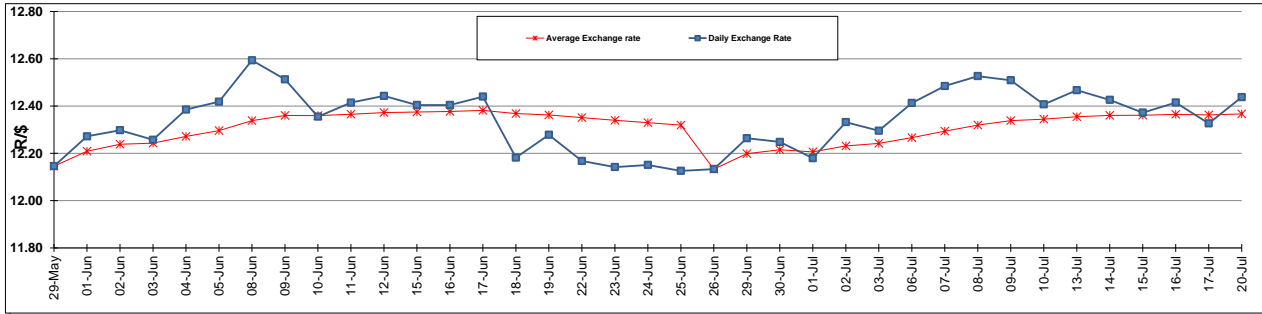
	PETROL 95 ULP	PETROL 93 ULP & LRP	DIESEL 0.05%	DIESEL 0.005%	ILL. PAR.
GAUTENG PUMP PRICE (SA c/l) AS FROM 01/07/2015	1,377.000	1,352.000	-	-	-
WHOLESALE PRICE (SA c/l) AS FROM 01/07/2015	-	-	1,170.790	1,174.190	786.828
SINGLE NATIONAL MAXIMUM RETAIL PRICE	-	-	-	-	1,014.000
BASIC FUEL PRICE - 20/07/2015 (SA c/l)	644.343	626.526	550.520	555.467	540.841
PRESS RELEASE CONTRIBUTION TO BFP 01/07/2015 - 20/07/2015 (SA c/l)	703.650	688.650	642.630	646.030	629.128
UNIT OVER/(UNDER) RECOVERY (SA c/l) - 20/07/2015	59.307	62.124	92.110	90.563	88.287
AVERAGE BASIC FUEL PRICE 26/06/2015 - 20/07/2015	660.112	643.639	578.738	584.365	568.717
AVERAGE UNIT OVER/(UNDER) RECOVERY 26/06/2015 - 20/07/2015	36.303	37.246	63.186	60.959	59.352

### ANALYSIS MOVEMENT OF AVERAGE OVER/(UNDER) RECOVERY

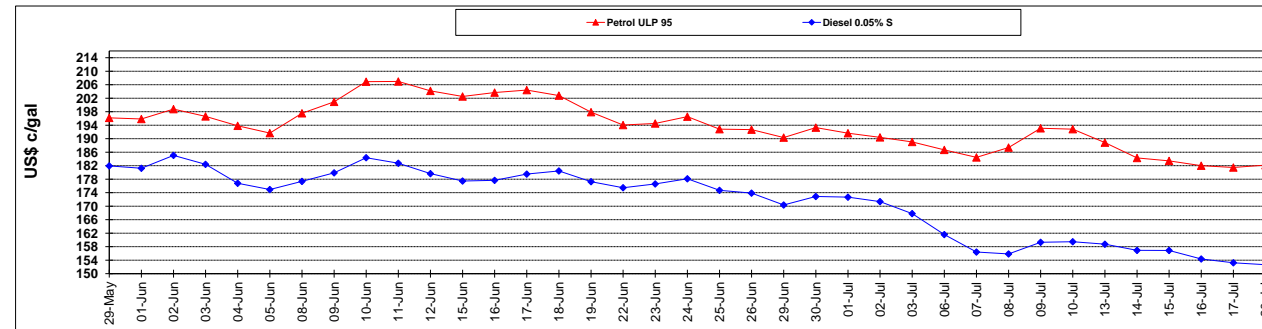
	PETROL 95	PETROL 93	DIESEL 0.05%	DIESEL 0.005%	ILL. PAR.
- MOVEMENT IN INTERNATIONAL PRODUCT PRICES	38.828	39.708	65.400	63.194	61.527
- MOVEMENT IN EXCHANGE RATE	(2.525)	(2.462)	(2.214)	(2.235)	(2.175)
AVERAGE UNIT OVER/(UNDER) RECOVERY 26/06/2015 - 20/07/2015	36.303	37.246	63.186	60.959	59.352

**R/\$ EXCHANGE RATE - (R/\$ 12.4377 - 20/07/2015)**

### EXCHANGE RATE USED IN BASIC FUEL PRICE



### INTERNATIONAL PRODUCT PRICES OF BASKET USED IN BASIC FUEL PRICE



### BASIC FUEL PRICE IN SA CENTS PER LITRE

