

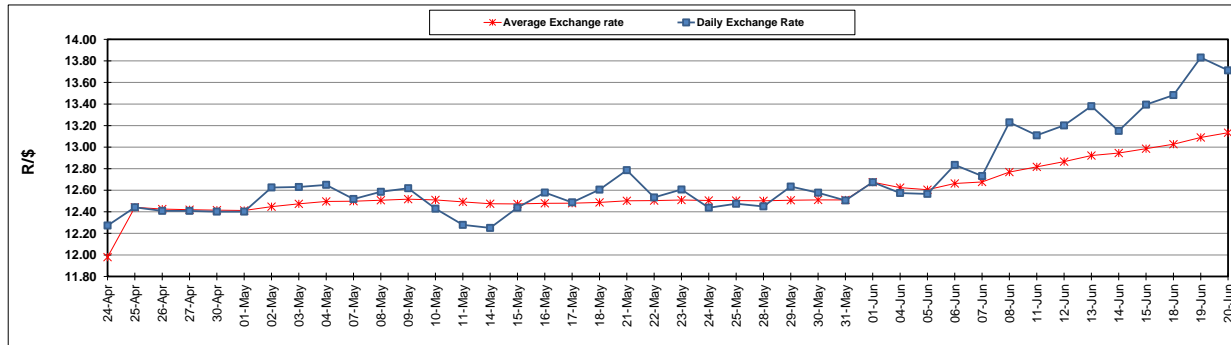
	PETROL 95 ULP	PETROL 93 ULP & LRP	DIESEL 0.05%	DIESEL 0.005%	ILL. PAR.
GAUTENG PUMP PRICE (SA c/l) AS FROM 06/06/2018	1 579.000	1 554.000	-	-	-
WHOLESALE PRICE (SA c/l) AS FROM 06/06/2018	-	-	1 418.830	1 425.230	927.088
SINGLE NATIONAL MAXIMUM RETAIL PRICE	-	-	-	-	1 198.000
BASIC FUEL PRICE - 20/06/2018 (SA c/l)	744.069	732.809	773.793	778.889	780.797
PRESS RELEASE CONTRIBUTION TO BFP 06/06/2018 - 20/06/2018 (SA c/l)	727.070	712.070	745.630	752.030	754.128
UNIT OVER/(UNDER) RECOVERY - 20/06/2018 (SA c/l)	(16.999)	(20.739)	(28.163)	(26.859)	(26.669)
AVERAGE BASIC FUEL PRICE 01/06/2018 - 20/06/2018	734.731	722.846	754.571	758.771	757.599
AVERAGE UNIT OVER/(UNDER) RECOVERY 01/06/2018 - 20/06/2018	(25.232)	(28.348)	(27.155)	(25.384)	(21.043)

ANALYSIS MOVEMENT OF AVERAGE OVER/(UNDER) RECOVERY

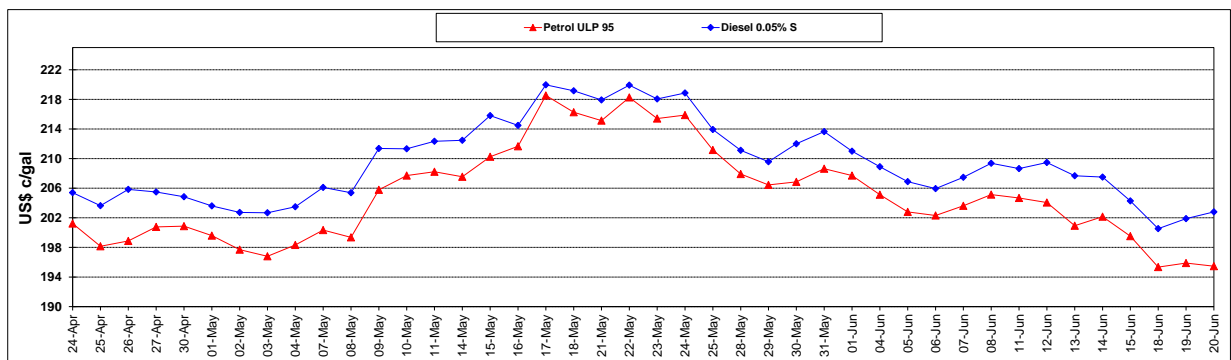
	PETROL 95	PETROL 93	DIESEL 0.05%	DIESEL 0.005%	ILL. PAR.
- MOVEMENT IN INTERNATIONAL PRODUCT PRICES	9.676	5.996	8.695	10.666	14.952
- MOVEMENT IN EXCHANGE RATE	(34.908)	(34.343)	(35.850)	(36.050)	(35.994)
AVERAGE UNIT OVER/(UNDER) RECOVERY 01/06/2018 - 20/06/2018	(25.232)	(28.348)	(27.155)	(25.384)	(21.043)

R/\$ EXCHANGE RATE - (R/\$13.7120 - 20/06/2018)

EXCHANGE RATE USED IN BASIC FUEL PRICE



INTERNATIONAL PRODUCT PRICES OF BASKET USED IN BASIC FUEL PRICE



BASIC FUEL PRICE IN SA CENTS PER LITRE

