

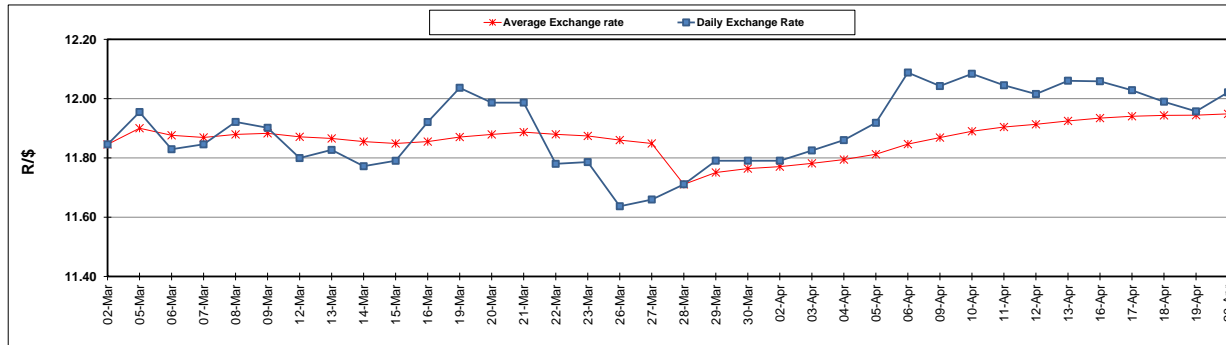
	PETROL 95 ULP	PETROL 93 ULP & LRP	DIESEL 0.05%	DIESEL 0.005%	ILL. PAR.
GAUTENG PUMP PRICE (SA c/l) AS FROM 07/03/2018	1 448.000	1 423.000	-	-	-
WHOLESALE PRICE (SA c/l) AS FROM 07/03/2018	-	-	1 274.830	1 280.230	793.088
SINGLE NATIONAL MAXIMUM RETAIL PRICE	-	-	-	-	1 026.000
BASIC FUEL PRICE - 19/04/2018 (SA c/l)	655.497	641.608	681.825	686.319	697.466
PRESS RELEASE CONTRIBUTION TO BFP 04/04/2018 - 20/04/2018 (SA c/l)	596.070	581.070	601.630	607.030	620.128
UNIT OVER/(UNDER) RECOVERY - 20/04/2018 (SA c/l)	(59.427)	(60.538)	(80.195)	(79.289)	(77.338)
AVERAGE BASIC FUEL PRICE 28/03/2018 - 20/04/2018	639.032	623.598	655.530	660.563	668.872
AVERAGE UNIT OVER/(UNDER) RECOVERY 28/03/2018 - 20/04/2018	(45.712)	(44.445)	(54.733)	(54.367)	(47.355)

ANALYSIS MOVEMENT OF AVERAGE OVER/(UNDER) RECOVERY

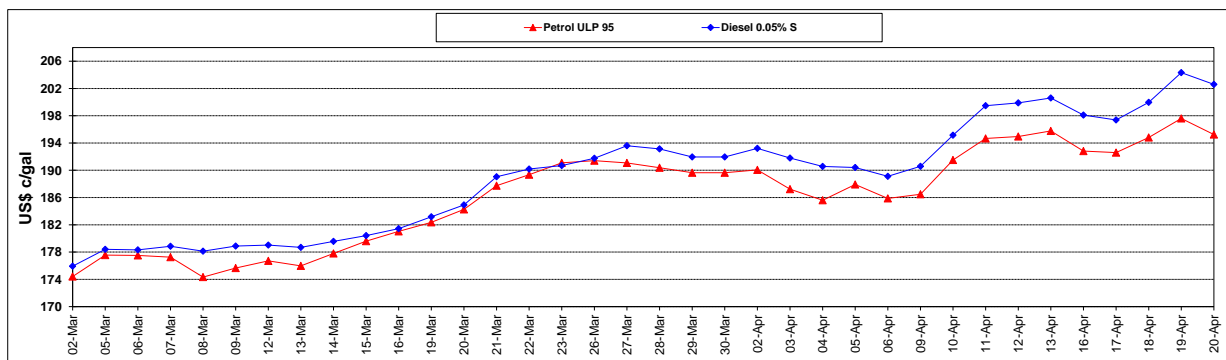
	PETROL 95	PETROL 93	DIESEL 0.05%	DIESEL 0.005%	ILL. PAR.
- MOVEMENT IN INTERNATIONAL PRODUCT PRICES	(40.380)	(39.242)	(49.263)	(48.854)	(41.774)
- MOVEMENT IN EXCHANGE RATE	(5.332)	(5.203)	(5.470)	(5.512)	(5.581)
AVERAGE UNIT OVER/(UNDER) RECOVERY 28/03/2018 - 20/04/2018	(45.712)	(44.445)	(54.733)	(54.367)	(47.355)

R/\$ EXCHANGE RATE - (R/\$12.0213 - 20/04/2018)

EXCHANGE RATE USED IN BASIC FUEL PRICE



INTERNATIONAL PRODUCT PRICES OF BASKET USED IN BASIC FUEL PRICE



BASIC FUEL PRICE IN SA CENTS PER LITRE

