

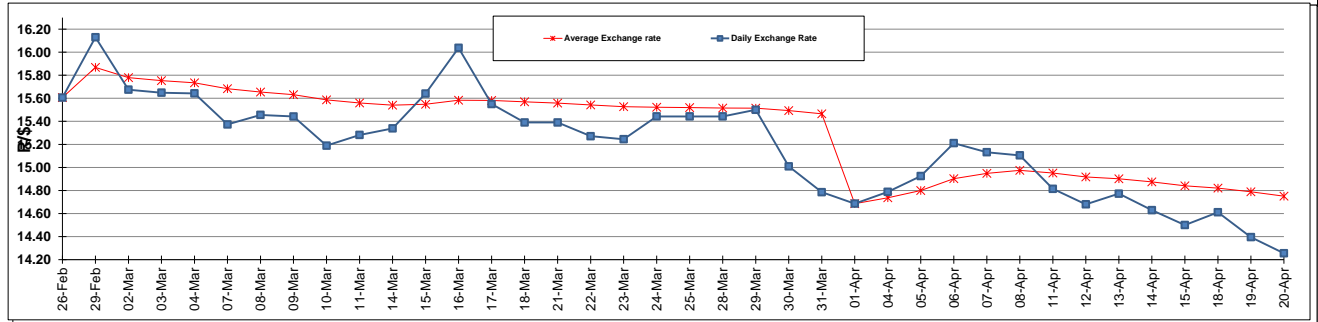
	PETROL 95 ULP	PETROL 93 ULP & LRP	DIESEL 0.05%	DIESEL 0.005%	ILL. PAR.
GAUTENG PUMP PRICE (SA c/l) AS FROM 06/04/2016	1 262.000	1 232.000	-	-	-
WHOLESALE PRICE (SA c/l) AS FROM 06/04/2016	-	-	1 053.870	1 059.270	662.628
SINGLE NATIONAL MAXIMUM RETAIL PRICE	-	-	-	-	848.000
BASIC FUEL PRICE - 20/04/2016 (SA c/l)	526.619	506.842	479.002	483.525	478.521
PRESS RELEASE CONTRIBUTION TO BFP 06/04/2016 - 20/04/2016 (SA c/l)	540.970	520.970	487.630	493.030	501.128
UNIT OVER/(UNDER) RECOVERY (SA c/l) - 20/04/2016	14.351	14.128	8.628	9.505	22.607
AVERAGE BASIC FUEL PRICE 01/04/2016 - 20/04/2016	540.464	521.680	463.758	468.193	475.918
AVERAGE UNIT OVER/(UNDER) RECOVERY 01/04/2016 - 20/04/2016	(10.851)	(11.639)	11.015	11.552	13.210

ANALYSIS MOVEMENT OF AVERAGE OVER/(UNDER) RECOVERY

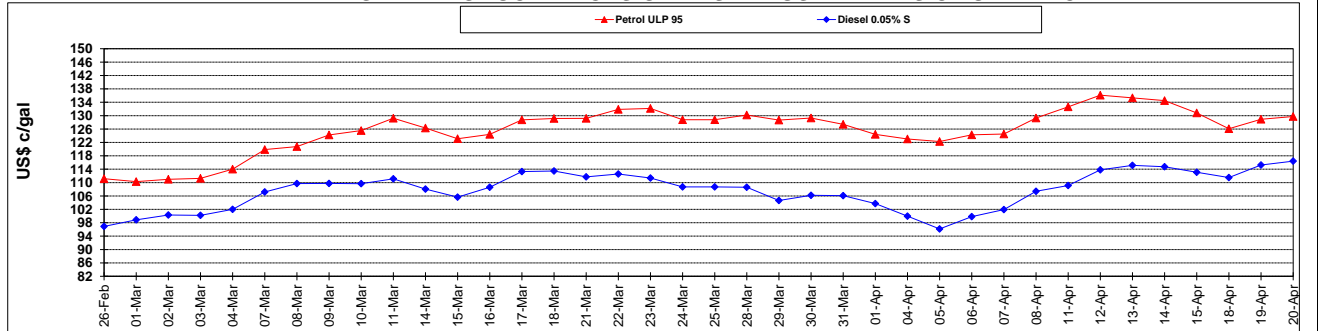
	PETROL 95	PETROL 93	DIESEL 0.05%	DIESEL 0.005%	ILL. PAR.
- MOVEMENT IN INTERNATIONAL PRODUCT PRICES	(37.053)	(36.930)	(11.468)	(11.147)	(9.863)
- MOVEMENT IN EXCHANGE RATE	26.202	25.291	22.483	22.698	23.073
AVERAGE UNIT OVER/(UNDER) RECOVERY 01/04/2016 - 20/04/2016	(10.851)	(11.639)	11.015	11.552	13.210

R/\$ EXCHANGE RATE - (R/\$ 14.2553 - 20/04/2016)

EXCHANGE RATE USED IN BASIC FUEL PRICE



INTERNATIONAL PRODUCT PRICES OF BASKET USED IN BASIC FUEL PRICE



BASIC FUEL PRICE IN SA CENTS PER LITRE

