

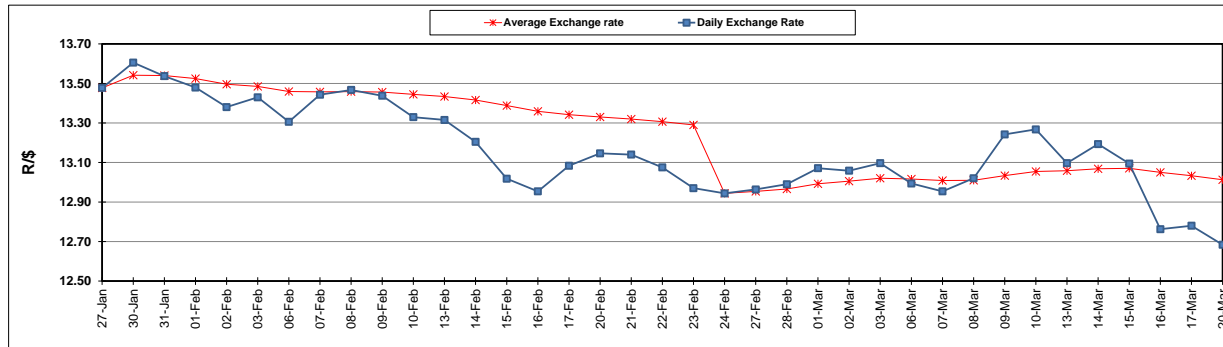
	PETROL 95 ULP	PETROL 93 ULP & LRP	DIESEL 0.05%	DIESEL 0.005%	ILL. PAR.
GAUTENG PUMP PRICE (SA c/l) AS FROM 01/03/2017	1 354.000	1 330.000	-	-	-
WHOLESALE PRICE (SA c/l) AS FROM 01/03/2017	-	-	1 160.830	1 163.230	750.588
SINGLE NATIONAL MAXIMUM RETAIL PRICE	-	-	-	-	966.000
BASIC FUEL PRICE - 20/03/2017 (SA c/l)	531.461	519.697	514.532	517.430	507.683
PRESS RELEASE CONTRIBUTION TO BFP 01/03/2017 - 20/03/2017 (SA c/l)	612.870	598.870	588.630	591.030	583.128
UNIT OVER/(UNDER) RECOVERY (SA c/l) - 20/03/2017	81.409	79.173	74.098	73.600	75.445
AVERAGE BASIC FUEL PRICE 24/02/2017 - 20/03/2017	556.571	544.822	552.035	554.949	544.204
AVERAGE UNIT OVER/(UNDER) RECOVERY 24/02/2017- 20/03/2017	57.710	55.460	36.948	36.434	40.336

### ANALYSIS MOVEMENT OF AVERAGE OVER/(UNDER) RECOVERY

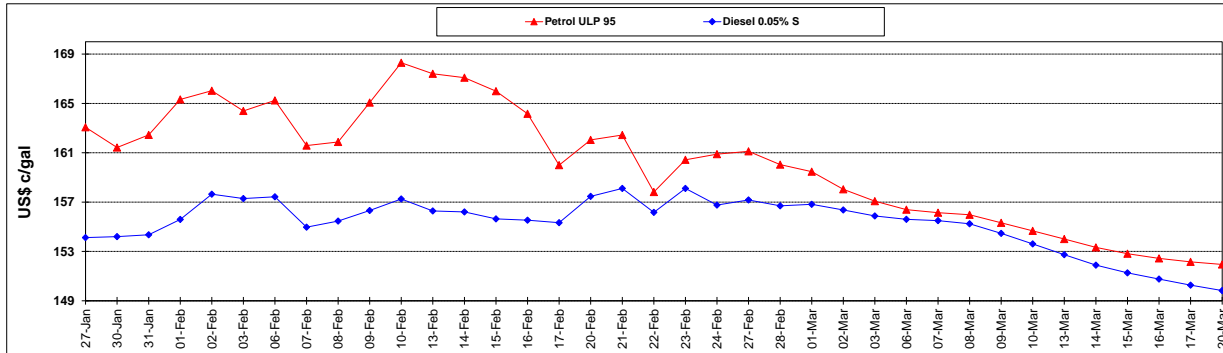
	PETROL 95	PETROL 93	DIESEL 0.05%	DIESEL 0.005%	ILL. PAR.
- MOVEMENT IN INTERNATIONAL PRODUCT PRICES	59.525	57.235	38.747	38.242	42.109
- MOVEMENT IN EXCHANGE RATE	(1.814)	(1.775)	(1.799)	(1.808)	(1.773)
AVERAGE UNIT OVER/(UNDER) RECOVERY 24/02/2017 - 20/03/2017	57.710	55.460	36.948	36.434	40.336

R/\$ EXCHANGE RATE - (R/\$ 12.6838 - 20/03/2017)

### EXCHANGE RATE USED IN BASIC FUEL PRICE



### INTERNATIONAL PRODUCT PRICES OF BASKET USED IN BASIC FUEL PRICE



### BASIC FUEL PRICE IN SA CENTS PER LITRE

