

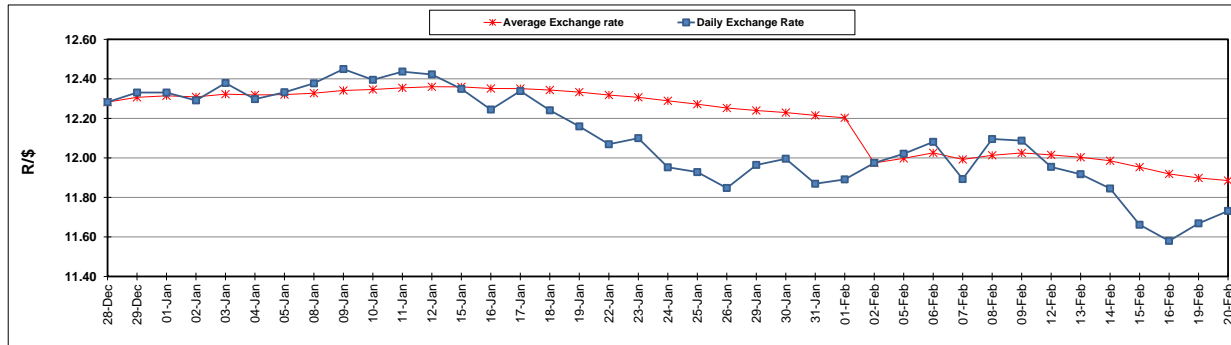
	PETROL 95 ULP	PETROL 93 ULP & LRP	DIESEL 0.05%	DIESEL 0.005%	ILL. PAR.
GAUTENG PUMP PRICE (SA c/l) AS FROM 07/02/2018	1 412.000	1 419.000	-	-	-
WHOLESALE PRICE (SA c/l) AS FROM 07/02/2018	-	-	1 256.630	1 259.030	818.388
SINGLE NATIONAL MAXIMUM RETAIL PRICE	-	-	-	-	1 056.000
BASIC FUEL PRICE - 20/02/2018 (SA c/l)	584.010	570.061	594.179	598.813	618.072
PRESS RELEASE CONTRIBUTION TO BFP 07/02/2018 - 20/02/2018 (SA c/l)	622.170	610.170	645.630	648.030	648.128
UNIT OVER/(UNDER) RECOVERY - 20/02/2018 (SA c/l)	38.160	40.109	51.451	49.217	30.056
AVERAGE BASIC FUEL PRICE 02/02/2018 - 20/02/2018	595.048	580.741	603.448	607.986	624.969
AVERAGE UNIT OVER/(UNDER) RECOVERY 02/02/2018 - 20/02/2018	34.045	36.352	46.105	43.967	27.544

ANALYSIS MOVEMENT OF AVERAGE OVER/(UNDER) RECOVERY

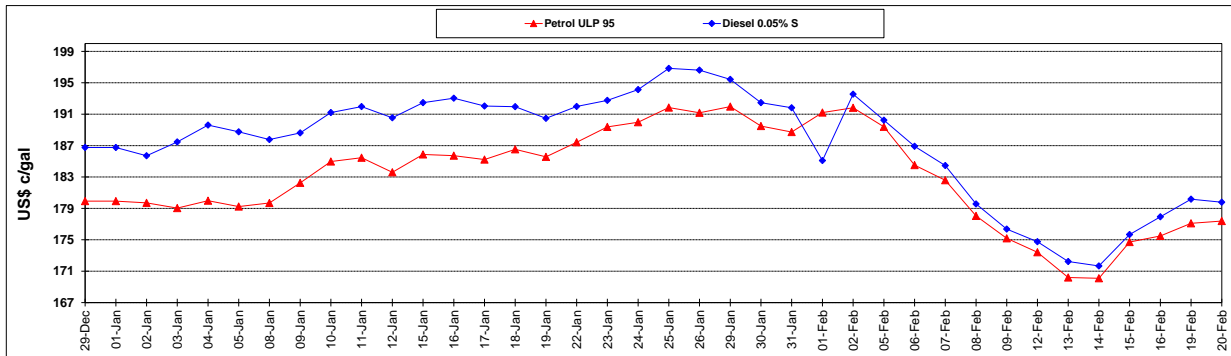
	PETROL 95	PETROL 93	DIESEL 0.05%	DIESEL 0.005%	ILL. PAR.
- MOVEMENT IN INTERNATIONAL PRODUCT PRICES	18.154	20.843	29.990	27.731	10.854
- MOVEMENT IN EXCHANGE RATE	15.891	15.509	16.115	16.236	16.690
AVERAGE UNIT OVER/(UNDER) RECOVERY 02/02/2018 - 20/02/2018	34.045	36.352	46.105	43.967	27.544

R/\$ EXCHANGE RATE - (R/\$ 11.7315 - 20/02/2018)

EXCHANGE RATE USED IN BASIC FUEL PRICE



INTERNATIONAL PRODUCT PRICES OF BASKET USED IN BASIC FUEL PRICE



BASIC FUEL PRICE IN SA CENTS PER LITRE

