

## UPDATE OF THE BASIC FUEL PRICE

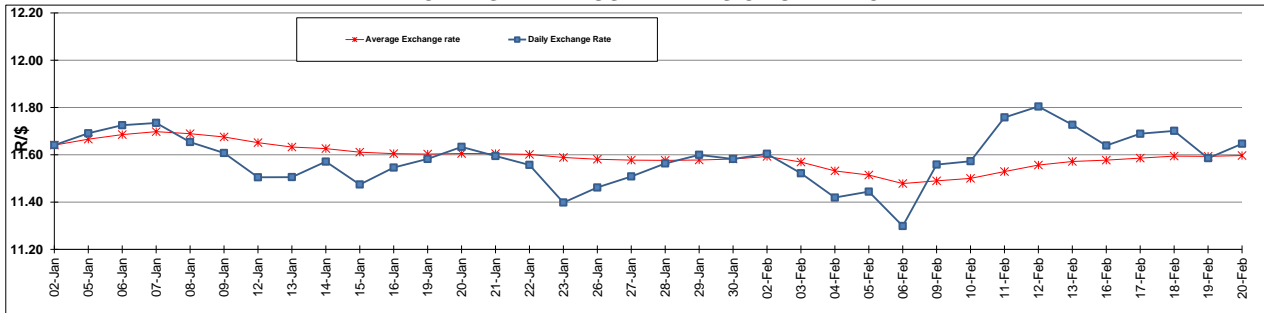
	PETROL 95 ULP	PETROL 93 ULP & LRP	DIESEL 0.05%	DIESEL 0.005%	ILL. PAR.
GAUTENG PUMP PRICE (SA c/l) AS FROM 04/02/2015	1,031.000	1,009.000	-	-	-
WHOLESALE PRICE (SA c/l) AS FROM 04/02/2015	-	-	926.090	930.490	645.928
SINGLE NATIONAL MAXIMUM RETAIL PRICE	-	-	-	-	833.000
BASIC FUEL PRICE - 20/02/2015 (SA c/l)	577.574	560.209	598.452	603.636	605.217
PRESS RELEASE CONTRIBUTION TO BFP 04/02/2015 - 20/02/2015 (SA c/l)	440.250	428.250	480.630	485.030	491.128
UNIT OVER/(UNDER) RECOVERY (SA c/l) - 20/02/2015	(137.324)	(131.959)	(117.822)	(118.606)	(114.089)
AVERAGE BASIC FUEL PRICE 30/01/2015 - 20/02/2015	545.629	529.014	567.376	571.282	578.888
AVERAGE UNIT OVER/(UNDER) RECOVERY 30/01/2015 - 20/02/2015	(87.942)	(83.327)	(67.621)	(67.127)	(68.635)

### ANALYSIS MOVEMENT OF AVERAGE OVER/(UNDER) RECOVERY

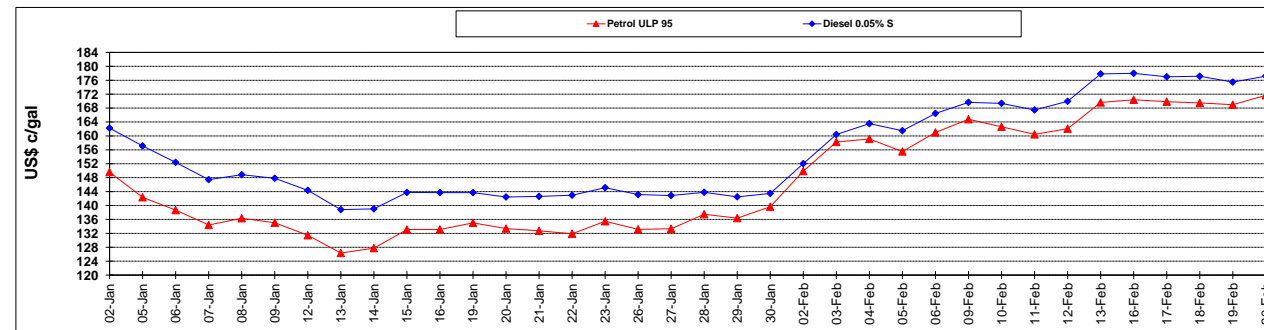
	PETROL 95	PETROL 93	DIESEL 0.05%	DIESEL 0.005%	ILL. PAR.
- MOVEMENT IN INTERNATIONAL PRODUCT PRICES	(87.033)	(82.446)	(66.677)	(66.176)	(67.672)
- MOVEMENT IN EXCHANGE RATE	(0.908)	(0.880)	(0.944)	(0.951)	(0.963)
AVERAGE UNIT OVER/(UNDER) RECOVERY 30/01/2015 - 20/02/2015	(87.942)	(83.327)	(67.621)	(67.127)	(68.635)

**R/\$ EXCHANGE RATE - (R/\$ 11.6466 - 20/02/2015)**

### EXCHANGE RATE USED IN BASIC FUEL PRICE



### INTERNATIONAL PRODUCT PRICES OF BASKET USED IN BASIC FUEL PRICE



### BASIC FUEL PRICE IN SA CENTS PER LITRE

