

UPDATE OF THE BASIC FUEL PRICE

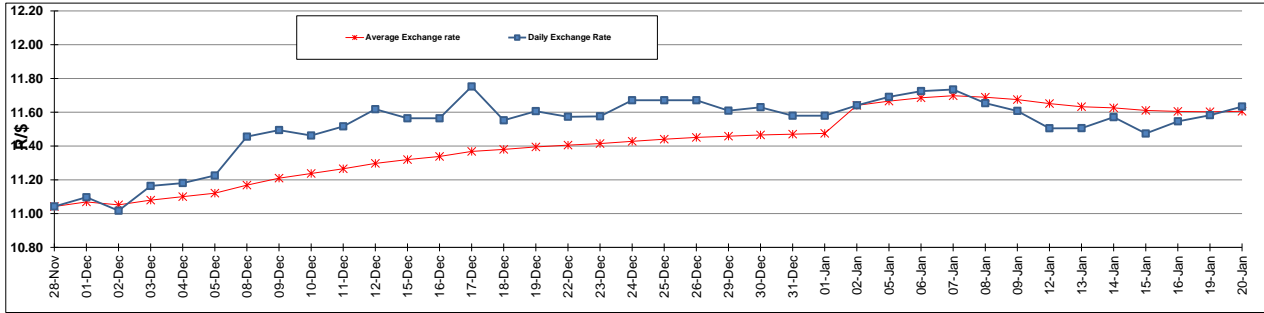
	PETROL 95 ULP	PETROL 93 ULP & LRP	DIESEL 0.05%	DIESEL 0.005%	ILL. PAR.
GAUTENG PUMP PRICE (SA c/l) AS FROM 07/01/2015	1,124.000	1,102.000	-	-	-
WHOLESALE PRICE (SA c/l) AS FROM 07/01/2015	-	-	1,028.090	1,032.490	747.928
SINGLE NATIONAL MAXIMUM RETAIL PRICE	-	-	-	-	969.000
BASIC FUEL PRICE - 20/01/2015 (SA c/l)	457.805	443.102	489.445	493.251	501.258
PRESS RELEASE CONTRIBUTION TO BFP 07/01/2015 - 20/01/2015 (SA c/l)	533.250	521.250	582.630	587.030	593.128
UNIT OVER/(UNDER) RECOVERY (SA c/l) - 20/01/2015	75.445	78.148	93.185	93.779	91.870
AVERAGE BASIC FUEL PRICE 02/01/2015 - 20/01/2015	462.210	449.413	502.571	506.623	510.465
AVERAGE UNIT OVER/(UNDER) RECOVERY 02/01/2015 - 20/01/2015	99.425	101.145	104.059	104.638	107.586

ANALYSIS MOVEMENT OF AVERAGE OVER/(UNDER) RECOVERY

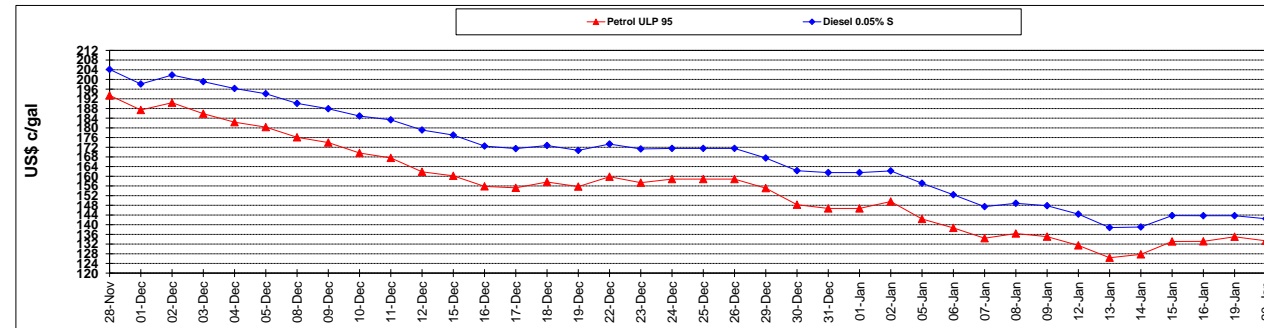
	PETROL 95	PETROL 93	DIESEL 0.05%	DIESEL 0.005%	ILL. PAR.
- MOVEMENT IN INTERNATIONAL PRODUCT PRICES	104.622	106.199	109.710	110.335	113.326
- MOVEMENT IN EXCHANGE RATE	(5.197)	(5.054)	(5.651)	(5.697)	(5.740)
AVERAGE UNIT OVER/(UNDER) RECOVERY 02/01/2015 - 20/01/2015	99.425	101.145	104.059	104.638	107.586

R/\$ EXCHANGE RATE - (R/\$ 11.6335 - 20/01/2015)

EXCHANGE RATE USED IN BASIC FUEL PRICE



INTERNATIONAL PRODUCT PRICES OF BASKET USED IN BASIC FUEL PRICE



BASIC FUEL PRICE IN SA CENTS PER LITRE

