

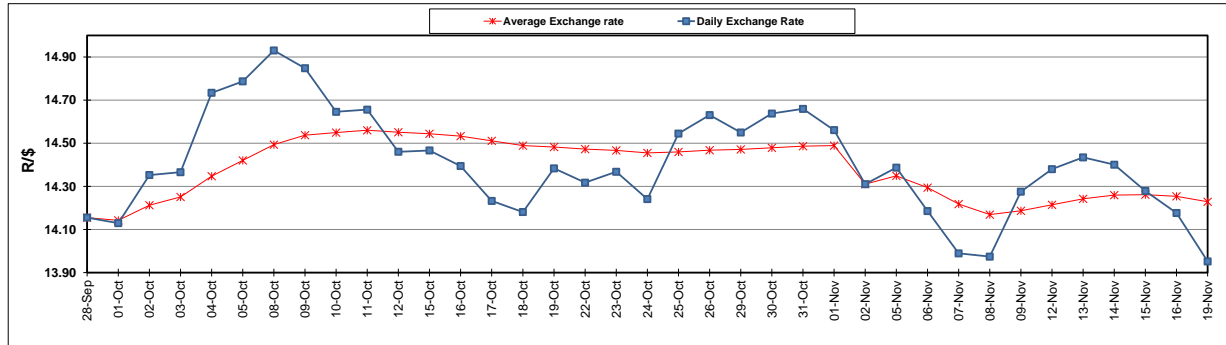
	PETROL 95 ULP	PETROL 93 ULP & LRP	DIESEL 0.05%	DIESEL 0.005%	ILL. PAR.
GAUTENG PUMP PRICE (SA c/l) AS FROM 07/11/2018	1 708.000	1 685.000	-	-	-
WHOLESALE PRICE (SA c/l) AS FROM 07/11/2018	-	-	1 612.750	1 620.150	1 085.088
SINGLE NATIONAL MAXIMUM RETAIL PRICE	-	-	-	-	1 409.000
BASIC FUEL PRICE - 19/11/2018 (SA c/l)	639.192	629.779	760.955	766.774	769.656
PRESS RELEASE CONTRIBUTION TO BFP 07/11/2018 - 19/11/2018 (SA c/l)	829.250	816.250	917.630	925.030	912.128
UNIT OVER/(UNDER) RECOVERY - 19/11/2018 (SA c/l)	190.058	186.471	156.675	158.256	142.472
AVERAGE BASIC FUEL PRICE 02/11/2018 - 19/11/2018	672.983	663.322	806.929	813.227	809.149
AVERAGE UNIT OVER/(UNDER) RECOVERY 02/11/2018 - 19/11/2018	161.747	158.408	104.201	104.554	95.979

ANALYSIS MOVEMENT OF AVERAGE OVER/(UNDER) RECOVERY

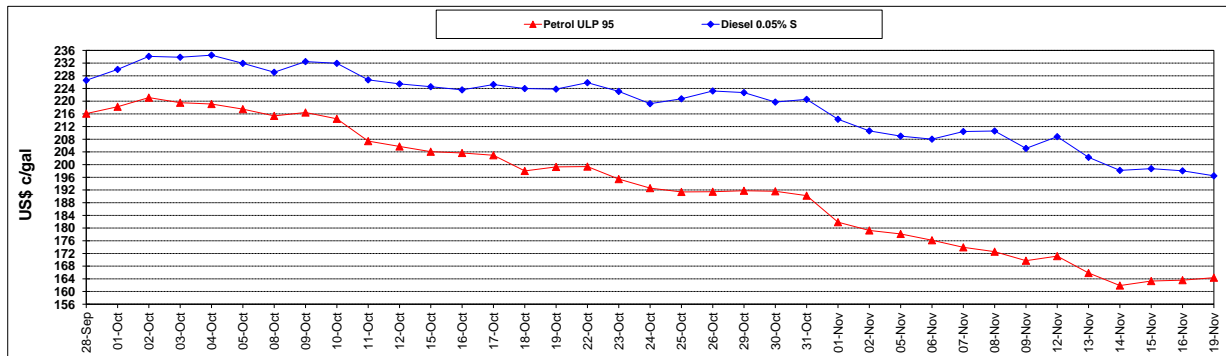
	PETROL 95	PETROL 93	DIESEL 0.05%	DIESEL 0.005%	ILL. PAR.
- MOVEMENT IN INTERNATIONAL PRODUCT PRICES	149.421	146.259	89.422	89.659	81.159
- MOVEMENT IN EXCHANGE RATE	12.326	12.149	14.779	14.894	14.820
AVERAGE UNIT OVER/(UNDER) RECOVERY 02/11/2018 - 19/11/2018	161.747	158.408	104.201	104.554	95.979

R/\$ EXCHANGE RATE - (R/\$13.9520 - 19/11/2018)

EXCHANGE RATE USED IN BASIC FUEL PRICE



INTERNATIONAL PRODUCT PRICES OF BASKET USED IN BASIC FUEL PRICE



BASIC FUEL PRICE IN SA CENTS PER LITRE

