

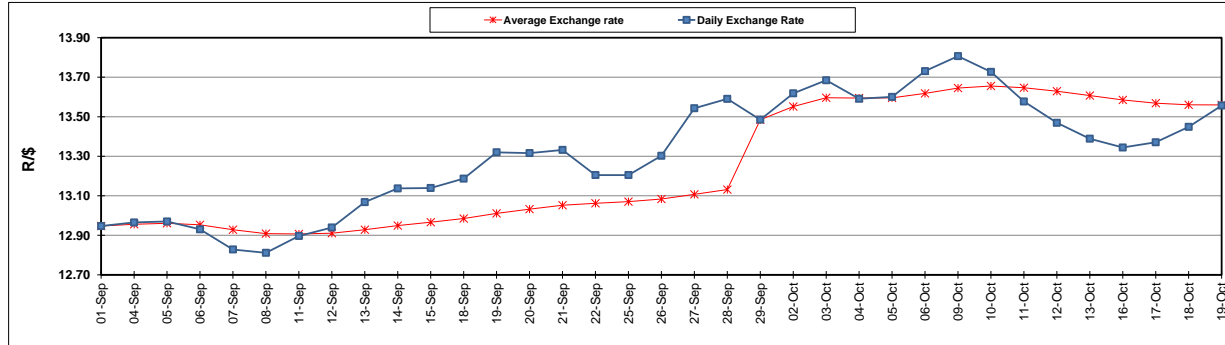
	PETROL 95 ULP	PETROL 93 ULP & LRP	DIESEL 0.05%	DIESEL 0.005%	ILL. PAR.
GAUTENG PUMP PRICE (SA c/l) AS FROM 04/10/2017	1 401.000	1 374.000	-	-	-
WHOLESALE PRICE (SA c/l) AS FROM 04/10/2017	-	-	1 212.330	1 217.730	771.088
SINGLE NATIONAL MAXIMUM RETAIL PRICE	-	-	-	-	992.000
BASIC FUEL PRICE - 19/10/2017 (SA c/l)	617.135	602.221	615.366	623.966	611.631
PRESS RELEASE CONTRIBUTION TO BFP 04/10/2017 - 19/10/2017 (SA c/l)	615.070	598.070	600.630	606.030	600.128
UNIT OVER/(UNDER) RECOVERY (SA c/l) - 19/10/2017	(2.065)	(4.151)	(14.736)	(17.936)	(11.503)
AVERAGE BASIC FUEL PRICE 29/09/2017 - 19/10/2017	610.436	594.230	613.543	623.119	608.915
AVERAGE UNIT OVER/(UNDER) RECOVERY 29/09/2017 - 19/10/2017	(1.166)	(1.160)	(21.313)	(25.489)	(16.587)

ANALYSIS MOVEMENT OF AVERAGE OVER/(UNDER) RECOVERY

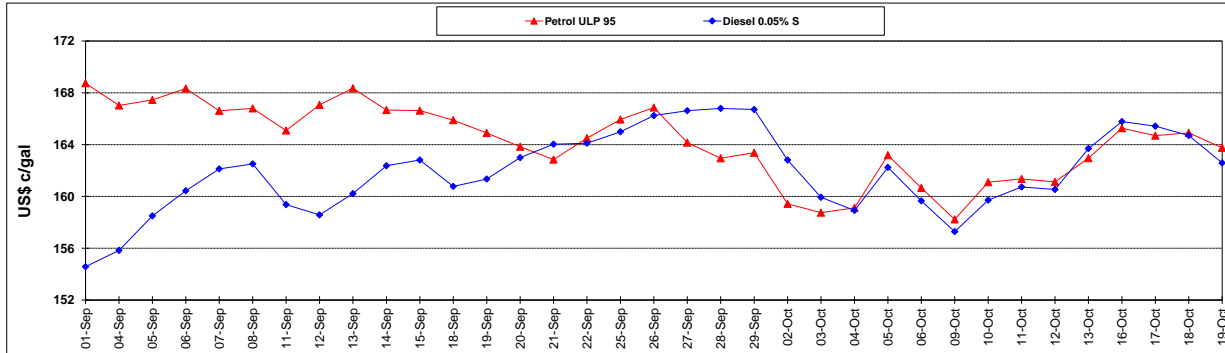
	PETROL 95	PETROL 93	DIESEL 0.05%	DIESEL 0.005%	ILL. PAR.
- MOVEMENT IN INTERNATIONAL PRODUCT PRICES	18.115	17.609	(1.934)	(5.807)	2.646
- MOVEMENT IN EXCHANGE RATE	(19.281)	(18.769)	(19.379)	(19.682)	(19.233)
AVERAGE UNIT OVER/(UNDER) RECOVERY 29/09/2017 - 19/10/2017	(1.166)	(1.160)	(21.313)	(25.489)	(16.587)

R/\$ EXCHANGE RATE - (R/\$ 13.5568- 19/10/2017)

EXCHANGE RATE USED IN BASIC FUEL PRICE



INTERNATIONAL PRODUCT PRICES OF BASKET USED IN BASIC FUEL PRICE



BASIC FUEL PRICE IN SA CENTS PER LITRE

