

UPDATE OF THE BASIC FUEL PRICE

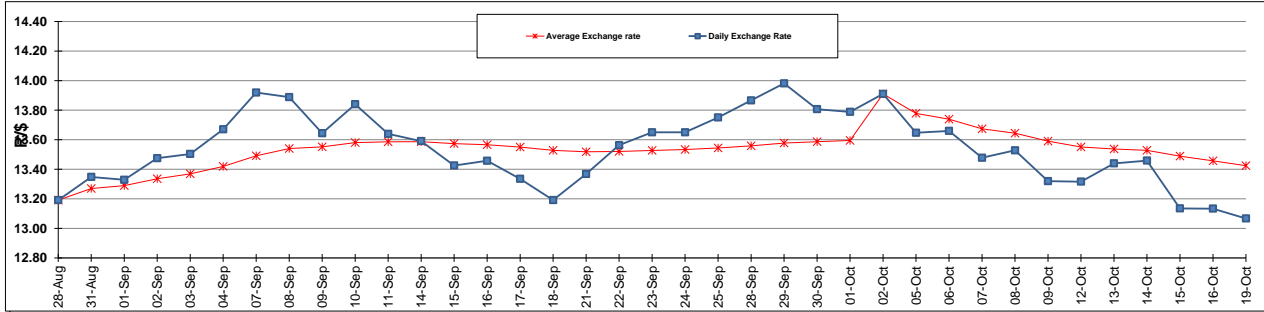
	PETROL 95 ULP	PETROL 93 ULP & LRP	DIESEL 0.05%	DIESEL 0.005%	ILL. PAR.
GAUTENG PUMP PRICE (SA c/l) AS FROM 07/10/2015	1,261.000	1,230.000	-	-	-
WHOLESALE PRICE (SA c/l) AS FROM 07/10/2015	-	-	1,093.970	1,100.370	711.828
SINGLE NATIONAL MAXIMUM RETAIL PRICE	-	-	-	-	914.000
BASIC FUEL PRICE - 19/10/2015 (SA c/l)	531.247	515.455	524.998	531.251	521.769
PRESS RELEASE CONTRIBUTION TO BFP 07/10/2015 - 19/10/2015 (SA c/l)	582.870	561.870	565.630	572.030	554.128
UNIT OVER/(UNDER) RECOVERY (SA c/l) - 19/10/2015	51.623	46.415	40.632	40.779	32.359
AVERAGE BASIC FUEL PRICE 02/10/2015 - 19/10/2015	570.955	554.852	555.930	561.376	548.906
AVERAGE UNIT OVER/(UNDER) RECOVERY 02/10/2015 - 19/10/2015	10.915	7.518	(3.550)	(2.096)	(7.278)

ANALYSIS MOVEMENT OF AVERAGE OVER/(UNDER) RECOVERY

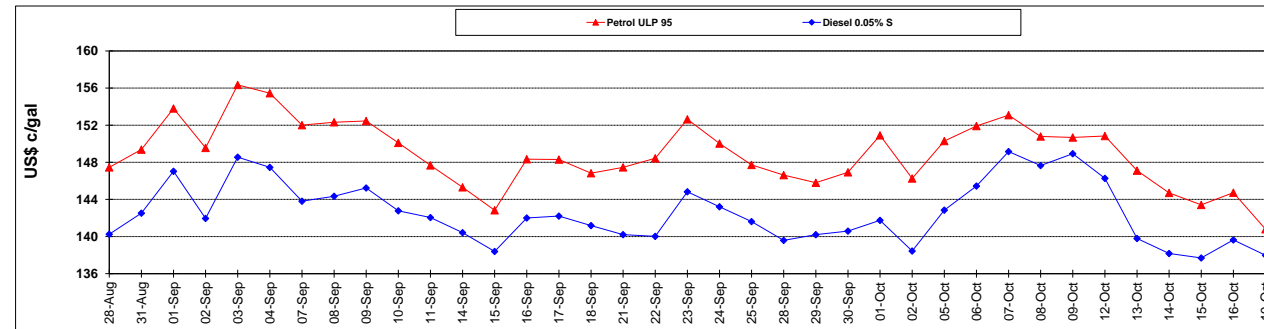
	PETROL 95	PETROL 93	DIESEL 0.05%	DIESEL 0.005%	ILL. PAR.
- MOVEMENT IN INTERNATIONAL PRODUCT PRICES	3.663	0.471	(10.611)	(9.226)	(14.250)
- MOVEMENT IN EXCHANGE RATE	7.252	7.047	7.061	7.130	6.972
AVERAGE UNIT OVER/(UNDER) RECOVERY 02/10/2015 - 19/10/2015	10.915	7.518	(3.550)	(2.096)	(7.278)

R/\$ EXCHANGE RATE - (R/\$ 13.0669 - 19/10/2015)

EXCHANGE RATE USED IN BASIC FUEL PRICE



INTERNATIONAL PRODUCT PRICES OF BASKET USED IN BASIC FUEL PRICE



BASIC FUEL PRICE IN SA CENTS PER LITRE

