

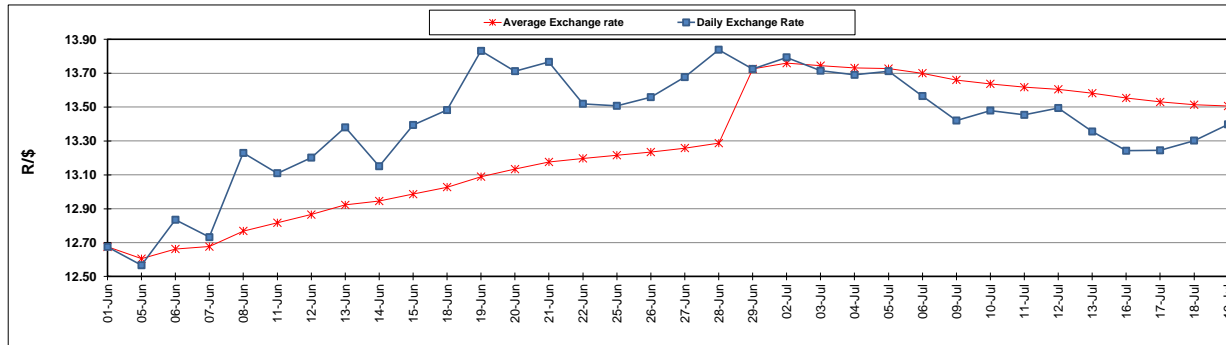
	PETROL 95 ULP	PETROL 93 ULP & LRP	DIESEL 0.05%	DIESEL 0.005%	ILL. PAR.
GAUTENG PUMP PRICE (SA c/l) AS FROM 04/07/2018	1 602.000	1 581.000	-	-	-
WHOLESALE PRICE (SA c/l) AS FROM 04/07/2018	-	-	1 444.830	1 449.230	949.088
SINGLE NATIONAL MAXIMUM RETAIL PRICE	-	-	-	-	1 228.000
BASIC FUEL PRICE - 19/07/2018 (SA c/l)	722.798	710.092	740.025	745.411	752.840
PRESS RELEASE CONTRIBUTION TO BFP 04/07/2018 - 19/07/2018 (SA c/l)	750.070	739.070	771.630	776.030	776.128
UNIT OVER/(UNDER) RECOVERY - 19/07/2018 (SA c/l)	27.272	28.978	31.605	30.619	23.288
AVERAGE BASIC FUEL PRICE 29/06/2018 - 19/07/2018	748.445	737.949	765.145	770.279	779.310
AVERAGE UNIT OVER/(UNDER) RECOVERY 29/06/2018 - 19/07/2018	(2.975)	(4.279)	1.285	0.951	(7.582)

### ANALYSIS MOVEMENT OF AVERAGE OVER/(UNDER) RECOVERY

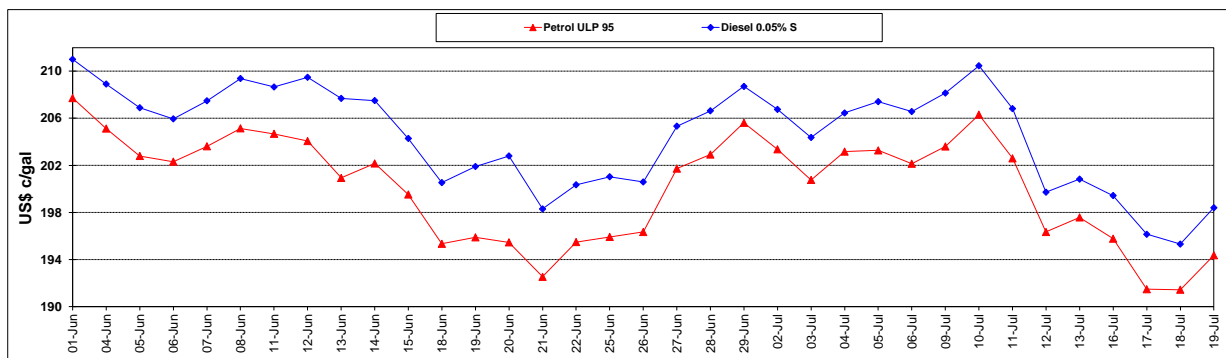
	PETROL 95	PETROL 93	DIESEL 0.05%	DIESEL 0.005%	ILL. PAR.
- MOVEMENT IN INTERNATIONAL PRODUCT PRICES	9.166	7.692	13.697	13.447	5.060
- MOVEMENT IN EXCHANGE RATE	(12.141)	(11.971)	(12.412)	(12.496)	(12.642)
AVERAGE UNIT OVER/(UNDER) RECOVERY 29/06/2018 - 19/07/2018	(2.975)	(4.279)	1.285	0.951	(7.582)

### R/\$ EXCHANGE RATE - (R/\$13.3980 - 19/07/2018)

#### EXCHANGE RATE USED IN BASIC FUEL PRICE



#### INTERNATIONAL PRODUCT PRICES OF BASKET USED IN BASIC FUEL PRICE



#### BASIC FUEL PRICE IN SA CENTS PER LITRE

