

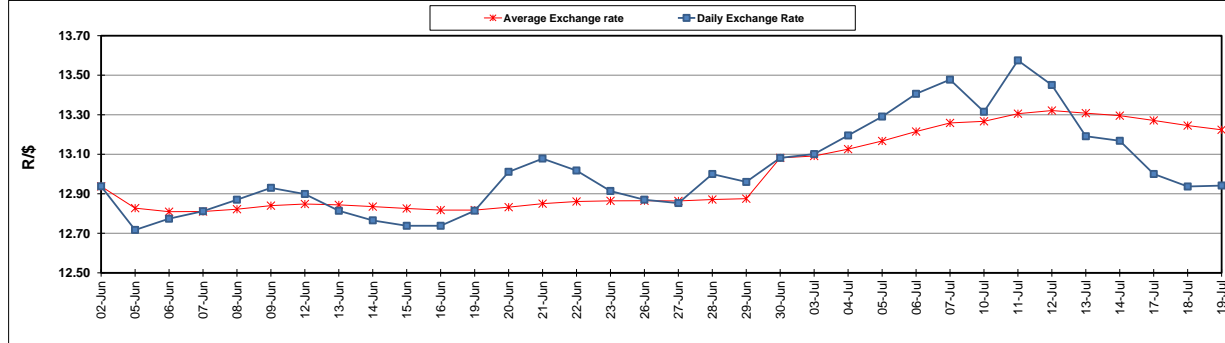
	PETROL 95 ULP	PETROL 93 ULP & LRP	DIESEL 0.05%	DIESEL 0.005%	ILL. PAR.
GAUTENG PUMP PRICE (SA c/l) AS FROM 05/07/2017	1 286.000	1 263.000	-	-	-
WHOLESALE PRICE (SA c/l) AS FROM 05/07/2017	-	-	1 097.330	1 101.730	657.088
SINGLE NATIONAL MAXIMUM RETAIL PRICE	-	-	-	-	841.000
BASIC FUEL PRICE - 19/07/2017 (SA c/l)	534.095	518.927	518.339	524.406	515.000
PRESS RELEASE CONTRIBUTION TO BFP 05/07/2017 - 19/07/2017 (SA c/l)	504.670	491.670	485.630	490.030	486.128
UNIT OVER/(UNDER) RECOVERY (SA c/l) - 19/07/2017	(29.425)	(27.257)	(32.709)	(34.376)	(28.872)
AVERAGE BASIC FUEL PRICE 30/06/2017 - 19/07/2017	530.888	515.218	520.864	526.556	518.603
AVERAGE UNIT OVER/(UNDER) RECOVERY 30/06/2017 - 19/07/2017	(11.646)	(8.762)	(22.376)	(23.668)	(20.261)

ANALYSIS MOVEMENT OF AVERAGE OVER/(UNDER) RECOVERY

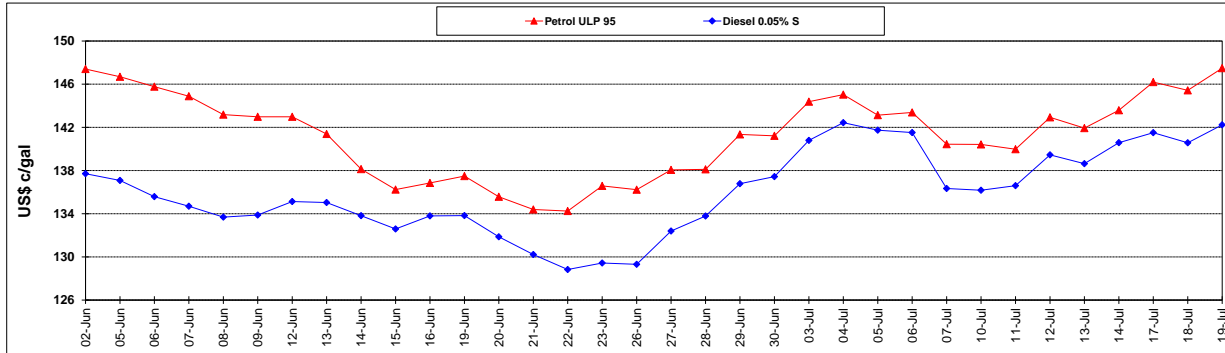
	PETROL 95	PETROL 93	DIESEL 0.05%	DIESEL 0.005%	ILL. PAR.
- MOVEMENT IN INTERNATIONAL PRODUCT PRICES	2.324	4.797	(8.670)	(9.812)	(6.613)
- MOVEMENT IN EXCHANGE RATE	(13.971)	(13.559)	(13.707)	(13.857)	(13.648)
AVERAGE UNIT OVER/(UNDER) RECOVERY 30/06/2017 - 19/07/2017	(11.646)	(8.762)	(22.376)	(23.668)	(20.261)

R/\$ EXCHANGE RATE - (R/\$ 12.9415- 19/07/2017)

EXCHANGE RATE USED IN BASIC FUEL PRICE



INTERNATIONAL PRODUCT PRICES OF BASKET USED IN BASIC FUEL PRICE



BASIC FUEL PRICE IN SA CENTS PER LITRE

