

## UPDATE OF THE BASIC FUEL PRICE

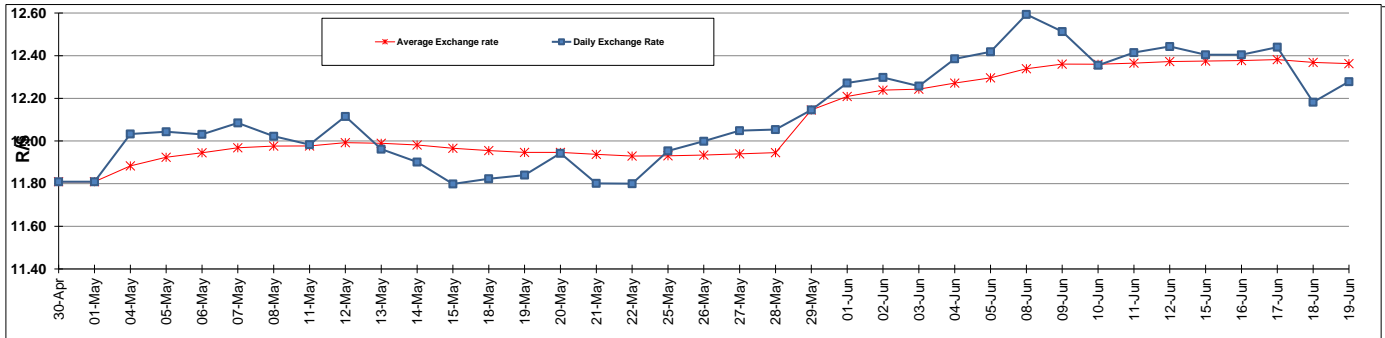
	PETROL 95 ULP	PETROL 93 ULP & LRP	DIESEL 0.05%	DIESEL 0.005%	ILL. PAR.
GAUTENG PUMP PRICE (SA c/l) AS FROM 03/06/2015	1,336.000	1,308.000	-	-	-
WHOLESALE PRICE (SA c/l) AS FROM 03/06/2015	-	-	1,166.790	1,170.190	780.828
SINGLE NATIONAL MAXIMUM RETAIL PRICE	-	-	-	-	1,006.000
BASIC FUEL PRICE - 19/06/2015 (SA c/l)	691.136	675.519	627.916	630.594	615.690
PRESS RELEASE CONTRIBUTION TO BFP 03/06/2015 - 19/06/2015 (SA c/l)	662.650	664.650	638.630	642.030	623.128
UNIT OVER/(UNDER) RECOVERY (SA c/l) - 19/06/2015	(28.486)	(10.869)	10.714	11.436	7.438
AVERAGE BASIC FUEL PRICE 29/05/2015 - 19/06/2015	702.947	687.996	640.833	643.589	625.406
AVERAGE UNIT OVER/(UNDER) RECOVERY 29/05/2015 - 19/06/2015	(49.109)	(35.909)	(11.390)	(10.184)	(10.153)

### ANALYSIS MOVEMENT OF AVERAGE OVER/(UNDER) RECOVERY

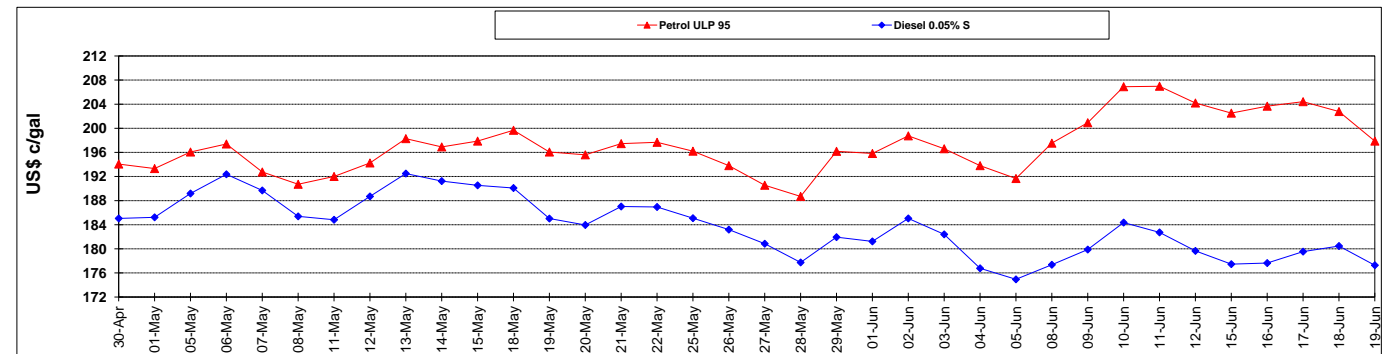
	PETROL 95	PETROL 93	DIESEL 0.05%	DIESEL 0.005%	ILL. PAR.
- MOVEMENT IN INTERNATIONAL PRODUCT PRICES	(25.376)	(12.679)	10.246	11.545	10.962
- MOVEMENT IN EXCHANGE RATE	(23.733)	(23.229)	(21.636)	(21.729)	(21.115)
AVERAGE UNIT OVER/(UNDER) RECOVERY 29/05/2015 - 19/06/2015	(49.109)	(35.909)	(11.390)	(10.184)	(10.153)

### R/\$ EXCHANGE RATE - (R/\$ 12.2784 - 19/06/2015)

#### EXCHANGE RATE USED IN BASIC FUEL PRICE



#### INTERNATIONAL PRODUCT PRICES OF BASKET USED IN BASIC FUEL PRICE



#### BASIC FUEL PRICE IN SA CENTS PER LITRE

