

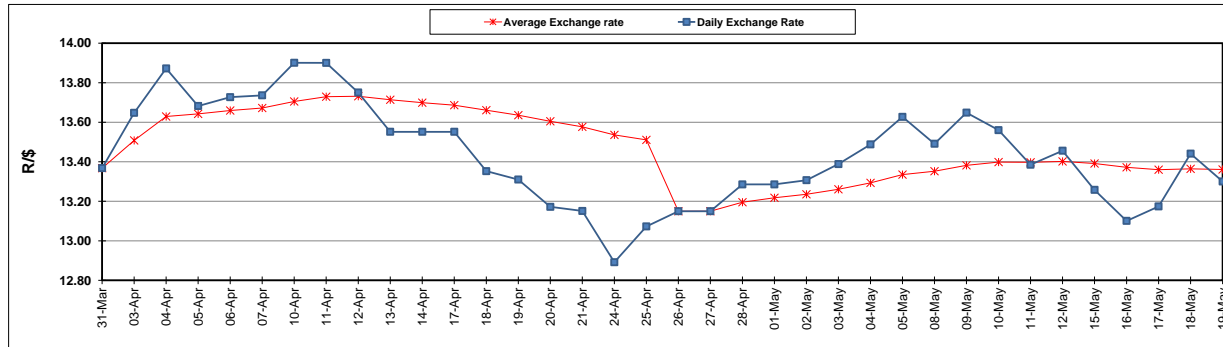
	PETROL 95 ULP	PETROL 93 ULP & LRP	DIESEL 0.05%	DIESEL 0.005%	ILL. PAR.
GAUTENG PUMP PRICE (SA c/l) AS FROM 03/05/2017	1 379.000	1 357.000	-	-	-
WHOLESALE PRICE (SA c/l) AS FROM 03/05/2017	-	-	1 180.330	1 184.730	736.088
SINGLE NATIONAL MAXIMUM RETAIL PRICE	-	-	-	-	947.000
BASIC FUEL PRICE - 19/05/2017 (SA c/l)	581.775	568.755	559.779	563.178	556.411
PRESS RELEASE CONTRIBUTION TO BFP 03/05/2017 - 19/05/2017 (SA c/l)	597.670	585.670	568.630	573.030	565.128
UNIT OVER/(UNDER) RECOVERY (SA c/l) - 19/05/2017	15.895	16.915	8.851	9.852	8.717
AVERAGE BASIC FUEL PRICE 26/04/2017 - 19/05/2017	562.830	546.547	539.620	543.120	533.993
AVERAGE UNIT OVER/(UNDER) RECOVERY 26/04/2017- 19/05/2017	21.229	25.512	20.677	21.021	21.691

ANALYSIS MOVEMENT OF AVERAGE OVER/(UNDER) RECOVERY

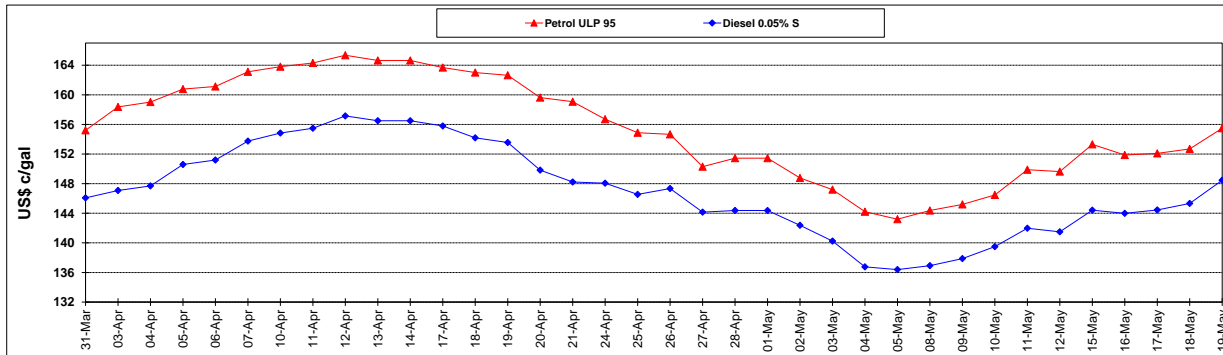
	PETROL 95	PETROL 93	DIESEL 0.05%	DIESEL 0.005%	ILL. PAR.
- MOVEMENT IN INTERNATIONAL PRODUCT PRICES	14.923	19.388	14.631	14.936	15.708
- MOVEMENT IN EXCHANGE RATE	6.306	6.124	6.046	6.085	5.983
AVERAGE UNIT OVER/(UNDER) RECOVERY 26/04/2017 - 19/05/2017	21.229	25.512	20.677	21.021	21.691

R/\$ EXCHANGE RATE - (R/\$ 13.3003 - 19/05/2017)

EXCHANGE RATE USED IN BASIC FUEL PRICE



INTERNATIONAL PRODUCT PRICES OF BASKET USED IN BASIC FUEL PRICE



BASIC FUEL PRICE IN SA CENTS PER LITRE

