

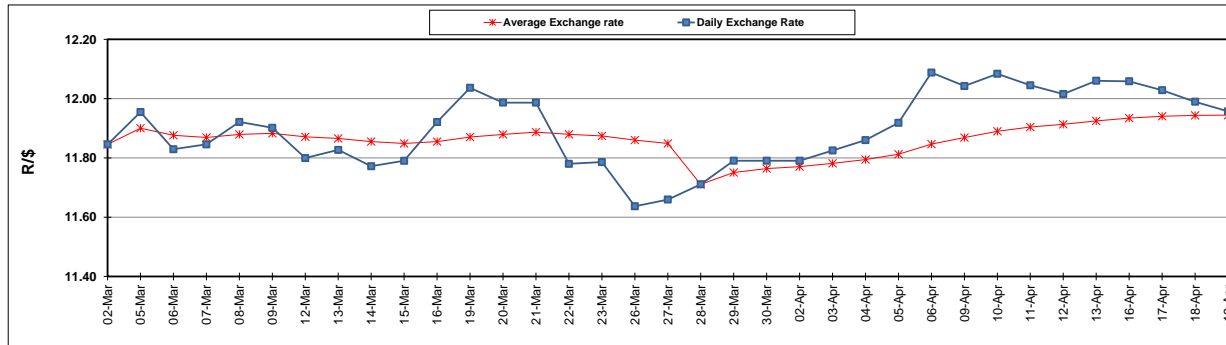
	PETROL 95 ULP	PETROL 93 ULP & LRP	DIESEL 0.05%	DIESEL 0.005%	ILL. PAR.
GAUTENG PUMP PRICE (SA c/l) AS FROM 07/03/2018	1 448.000	1 423.000	-	-	-
WHOLESALE PRICE (SA c/l) AS FROM 07/03/2018	-	-	1 274.830	1 280.230	793.088
SINGLE NATIONAL MAXIMUM RETAIL PRICE	-	-	-	-	1 026.000
BASIC FUEL PRICE - 19/04/2018 (SA c/l)	659.511	644.489	683.717	688.295	698.550
PRESS RELEASE CONTRIBUTION TO BFP 04/04/2018 - 19/04/2018 (SA c/l)	596.070	581.070	601.630	607.030	620.128
UNIT OVER/(UNDER) RECOVERY - 19/04/2018 (SA c/l)	(63.441)	(63.419)	(82.087)	(81.265)	(78.422)
AVERAGE BASIC FUEL PRICE 28/03/2018 - 19/04/2018	638.063	622.538	653.983	659.048	667.190
AVERAGE UNIT OVER/(UNDER) RECOVERY 28/03/2018 - 19/04/2018	(44.905)	(43.498)	(53.235)	(52.901)	(45.591)

ANALYSIS MOVEMENT OF AVERAGE OVER/(UNDER) RECOVERY

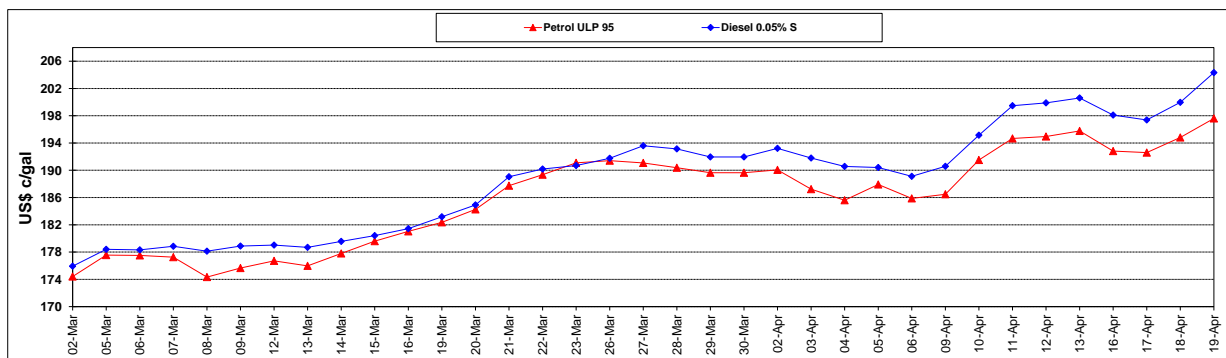
	PETROL 95	PETROL 93	DIESEL 0.05%	DIESEL 0.005%	ILL. PAR.
- MOVEMENT IN INTERNATIONAL PRODUCT PRICES	(39.803)	(38.520)	(48.006)	(47.631)	(40.257)
- MOVEMENT IN EXCHANGE RATE	(5.102)	(4.977)	(5.229)	(5.269)	(5.334)
AVERAGE UNIT OVER/(UNDER) RECOVERY 28/03/2018 - 19/04/2018	(44.905)	(43.498)	(53.235)	(52.901)	(45.591)

R/\$ EXCHANGE RATE - (R/\$11.9570 - 19/04/2018)

EXCHANGE RATE USED IN BASIC FUEL PRICE



INTERNATIONAL PRODUCT PRICES OF BASKET USED IN BASIC FUEL PRICE



BASIC FUEL PRICE IN SA CENTS PER LITRE

