

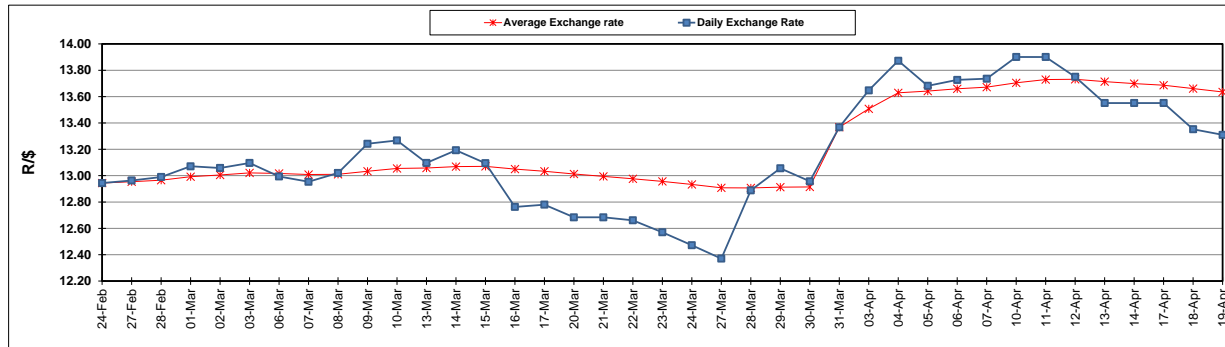
	PETROL 95 ULP	PETROL 93 ULP & LRP	DIESEL 0.05%	DIESEL 0.005%	ILL. PAR.
GAUTENG PUMP PRICE (SA c/l) AS FROM 05/04/2017	1 330.000	1 308.000	-	-	-
WHOLESALE PRICE (SA c/l) AS FROM 05/04/2017	-	-	1 150.330	1 152.730	702.088
SINGLE NATIONAL MAXIMUM RETAIL PRICE	-	-	-	-	901.000
BASIC FUEL PRICE - 19/04/2017 (SA c/l)	604.852	590.436	575.353	579.118	571.509
PRESS RELEASE CONTRIBUTION TO BFP 05/04/2017 - 19/04/2017 (SA c/l)	548.670	536.670	538.630	541.030	531.128
UNIT OVER/(UNDER) RECOVERY (SA c/l) - 19/04/2017	(56.182)	(53.766)	(36.723)	(38.088)	(40.381)
AVERAGE BASIC FUEL PRICE 31/03/2017 - 19/04/2017	617.736	601.440	586.953	590.994	583.769
AVERAGE UNIT OVER/(UNDER) RECOVERY 31/03/2017- 19/04/2017	(55.309)	(51.441)	(37.608)	(39.249)	(41.498)

ANALYSIS MOVEMENT OF AVERAGE OVER/(UNDER) RECOVERY

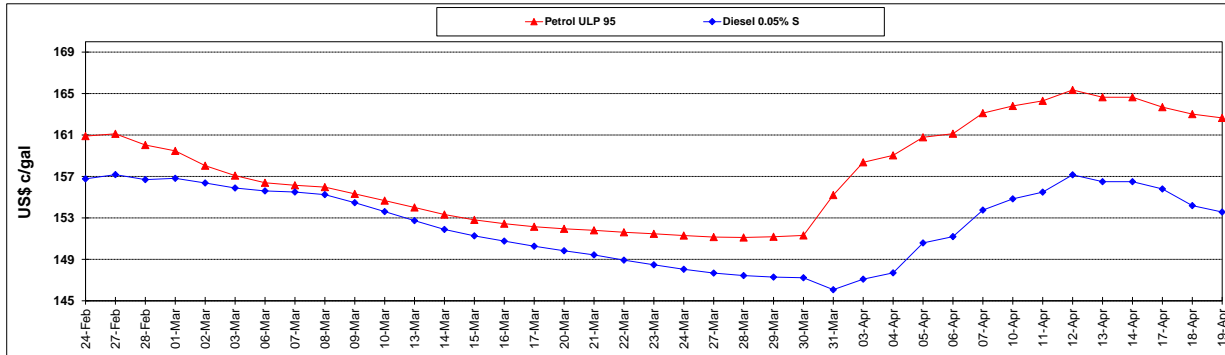
	PETROL 95	PETROL 93	DIESEL 0.05%	DIESEL 0.005%	ILL. PAR.
- MOVEMENT IN INTERNATIONAL PRODUCT PRICES	(22.646)	(19.640)	(6.574)	(8.001)	(10.631)
- MOVEMENT IN EXCHANGE RATE	(32.663)	(31.801)	(31.035)	(31.249)	(30.867)
AVERAGE UNIT OVER/(UNDER) RECOVERY 31/03/2017 - 19/04/2017	(55.309)	(51.441)	(37.608)	(39.249)	(41.498)

R/\$ EXCHANGE RATE - (R/\$ 13.3100 - 19/04/2017)

EXCHANGE RATE USED IN BASIC FUEL PRICE



INTERNATIONAL PRODUCT PRICES OF BASKET USED IN BASIC FUEL PRICE



BASIC FUEL PRICE IN SA CENTS PER LITRE

