

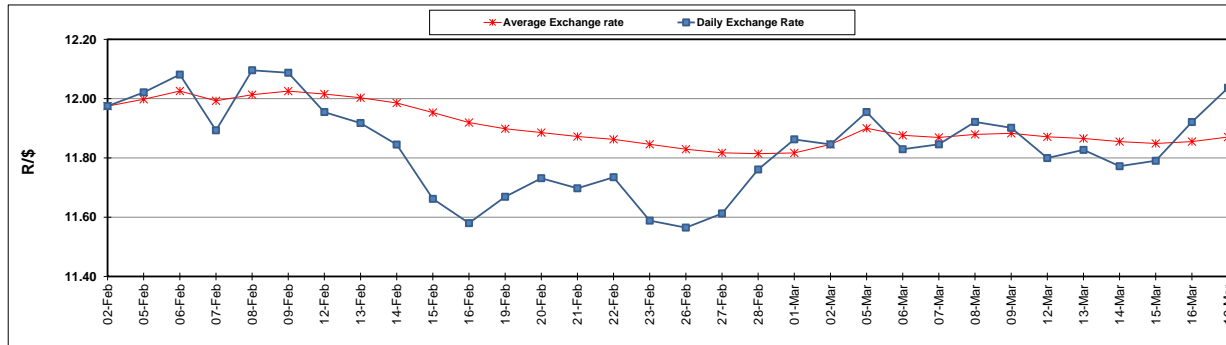
	PETROL 95 ULP	PETROL 93 ULP & LRP	DIESEL 0.05%	DIESEL 0.005%	ILL. PAR.
GAUTENG PUMP PRICE (SA c/l) AS FROM 07/03/2018	1 376.000	1 354.000	-	-	-
WHOLESALE PRICE (SA c/l) AS FROM 07/03/2018	-	-	1 209.630	1 215.030	795.388
SINGLE NATIONAL MAXIMUM RETAIL PRICE	-	-	-	-	1 026.000
BASIC FUEL PRICE - 19/03/2018 (SA c/l)	615.402	601.201	620.861	626.296	626.630
PRESS RELEASE CONTRIBUTION TO BFP 07/03/2018 - 19/03/2018 (SA c/l)	586.170	574.170	598.630	604.030	625.128
UNIT OVER/(UNDER) RECOVERY - 19/03/2018 (SA c/l)	(29.232)	(27.031)	(22.231)	(22.266)	(1.502)
AVERAGE BASIC FUEL PRICE 02/03/2018 - 19/03/2018	591.795	578.013	599.982	604.642	618.260
AVERAGE UNIT OVER/(UNDER) RECOVERY 02/03/2018 - 19/03/2018	3.375	5.157	10.398	10.388	12.618

### ANALYSIS MOVEMENT OF AVERAGE OVER/(UNDER) RECOVERY

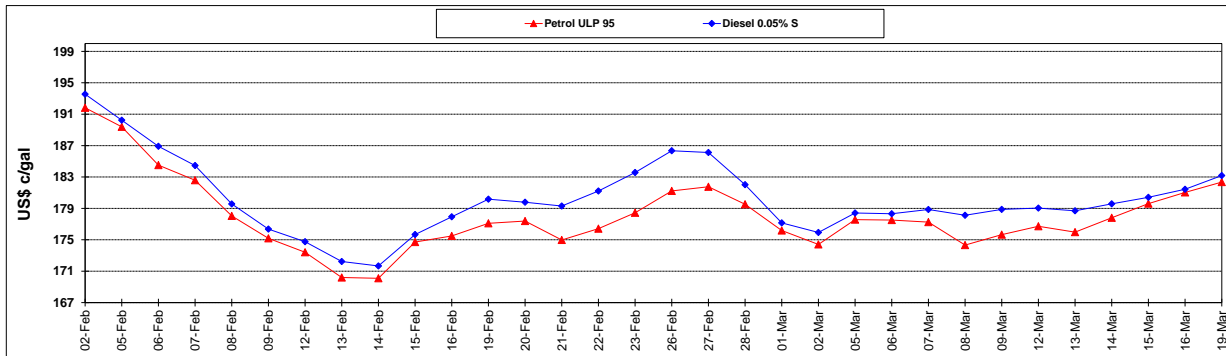
	PETROL 95	PETROL 93	DIESEL 0.05%	DIESEL 0.005%	ILL. PAR.
- MOVEMENT IN INTERNATIONAL PRODUCT PRICES	6.052	7.772	13.112	13.123	15.415
- MOVEMENT IN EXCHANGE RATE	(2.677)	(2.615)	(2.714)	(2.735)	(2.797)
AVERAGE UNIT OVER/(UNDER) RECOVERY 02/03/2018 - 19/03/2018	3.375	5.157	10.398	10.388	12.618

### R/\$ EXCHANGE RATE - (R/\$12.0365 - 19/03/2018)

#### EXCHANGE RATE USED IN BASIC FUEL PRICE



#### INTERNATIONAL PRODUCT PRICES OF BASKET USED IN BASIC FUEL PRICE



#### BASIC FUEL PRICE IN SA CENTS PER LITRE

