

UPDATE OF THE BASIC FUEL PRICE

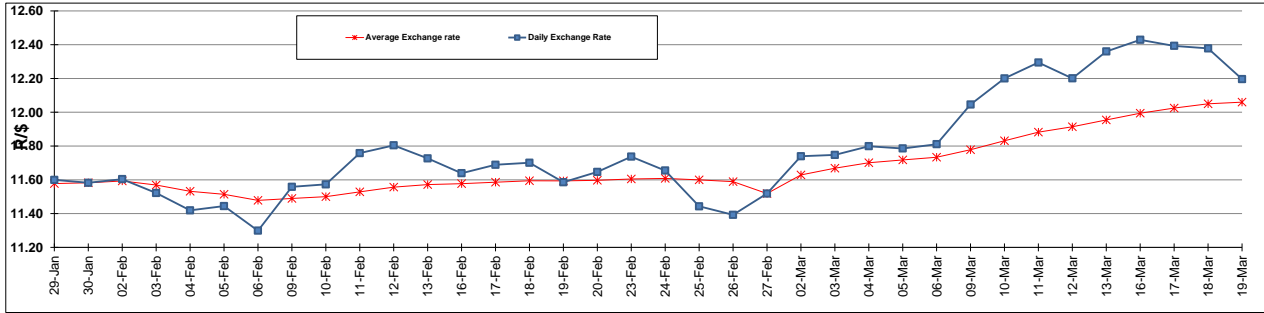
	PETROL 95 ULP	PETROL 93 ULP & LRP	DIESEL 0.05%	DIESEL 0.005%	ILL. PAR.
GAUTENG PUMP PRICE (SA c/l) AS FROM 04/03/2015	1,127.000	1,105.000	-	-	-
WHOLESALE PRICE (SA c/l) AS FROM 04/03/2015	-	-	1,000.090	1,004.490	718.928
SINGLE NATIONAL MAXIMUM RETAIL PRICE	-	-	-	-	931.000
BASIC FUEL PRICE - 19/03/2015 (SA c/l)	592.558	573.032	574.116	581.787	563.341
PRESS RELEASE CONTRIBUTION TO BFP 04/03/2015 - 19/03/2015 (SA c/l)	536.250	524.250	554.630	559.030	564.128
UNIT OVER/(UNDER) RECOVERY (SA c/l) - 19/03/2015	(56.308)	(48.782)	(19.486)	(22.757)	0.787
AVERAGE BASIC FUEL PRICE 27/02/2015 - 19/03/2015	603.033	585.279	590.180	595.925	580.248
AVERAGE UNIT OVER/(UNDER) RECOVERY 27/02/2015 - 19/03/2015	(85.983)	(80.229)	(50.350)	(51.695)	(30.720)

ANALYSIS MOVEMENT OF AVERAGE OVER/(UNDER) RECOVERY

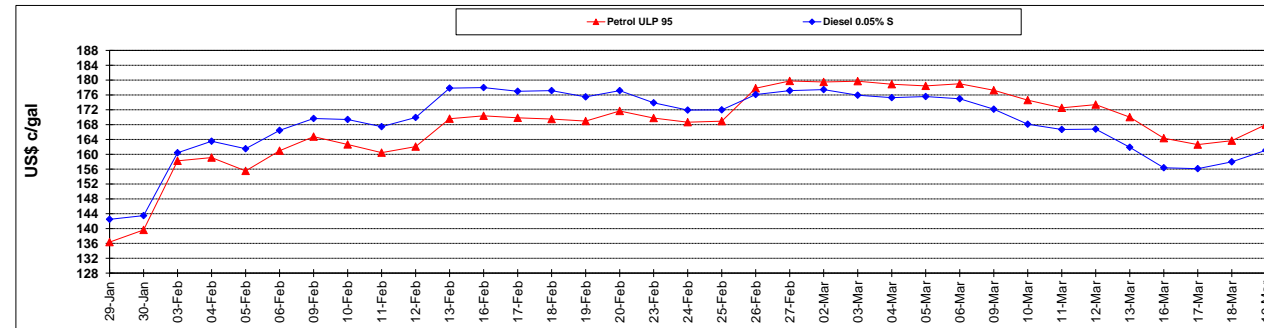
	PETROL 95	PETROL 93	DIESEL 0.05%	DIESEL 0.005%	ILL. PAR.
- MOVEMENT IN INTERNATIONAL PRODUCT PRICES	(62.437)	(57.376)	(27.305)	(28.426)	(8.063)
- MOVEMENT IN EXCHANGE RATE	(23.546)	(22.853)	(23.045)	(23.269)	(22.657)
AVERAGE UNIT OVER/(UNDER) RECOVERY 27/02/2015 - 19/03/2015	(85.983)	(80.229)	(50.350)	(51.695)	(30.720)

R/\$ EXCHANGE RATE - (R/\$ 12.1963 - 19/03/2015)

EXCHANGE RATE USED IN BASIC FUEL PRICE



INTERNATIONAL PRODUCT PRICES OF BASKET USED IN BASIC FUEL PRICE



BASIC FUEL PRICE IN SA CENTS PER LITRE

