

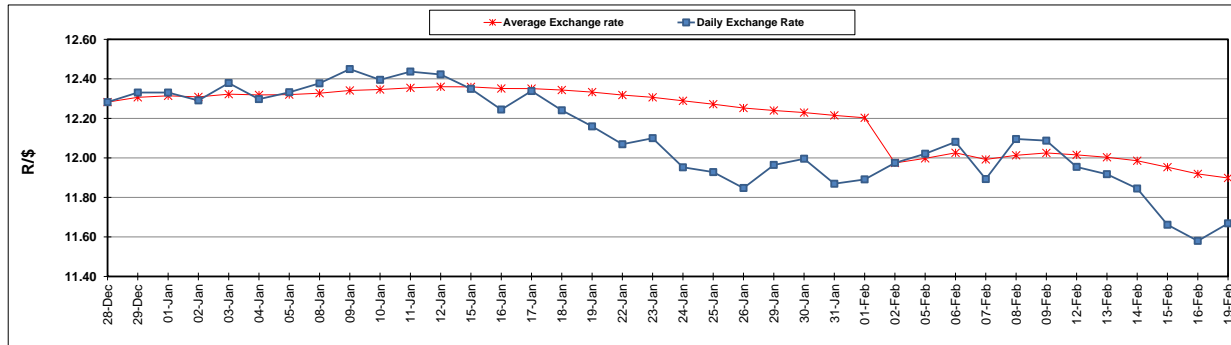
	PETROL 95 ULP	PETROL 93 ULP & LRP	DIESEL 0.05%	DIESEL 0.005%	ILL. PAR.
GAUTENG PUMP PRICE (SA c/l) AS FROM 07/02/2018	1 412.000	1 419.000	-	-	-
WHOLESALE PRICE (SA c/l) AS FROM 07/02/2018	-	-	1 256.630	1 259.030	818.388
SINGLE NATIONAL MAXIMUM RETAIL PRICE	-	-	-	-	1 056.000
BASIC FUEL PRICE - 19/02/2018 (SA c/l)	580.049	566.175	592.248	596.928	617.191
PRESS RELEASE CONTRIBUTION TO BFP 07/02/2018 - 19/02/2018 (SA c/l)	622.170	610.170	645.630	648.030	648.128
UNIT OVER/(UNDER) RECOVERY - 19/02/2018 (SA c/l)	42.121	43.995	53.382	51.102	30.937
AVERAGE BASIC FUEL PRICE 02/02/2018 - 19/02/2018	595.968	581.631	604.220	608.750	625.543
AVERAGE UNIT OVER/(UNDER) RECOVERY 02/02/2018 - 19/02/2018	33.702	36.039	45.660	43.530	27.335

### ANALYSIS MOVEMENT OF AVERAGE OVER/(UNDER) RECOVERY

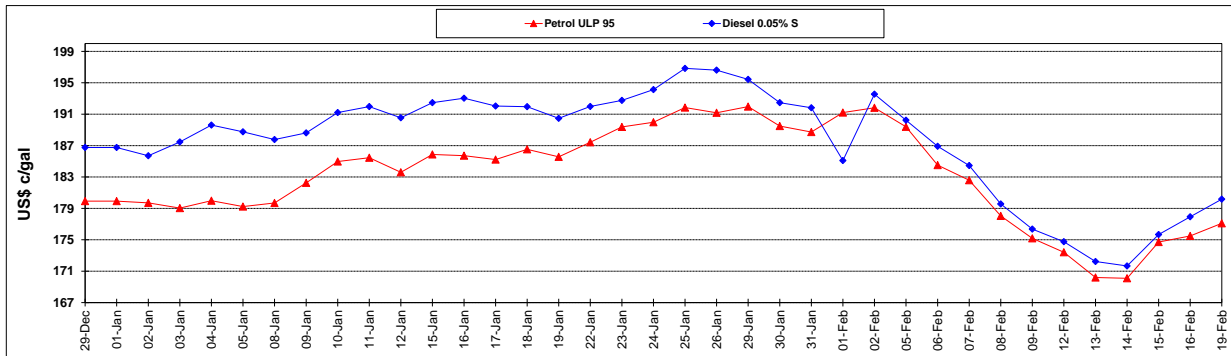
	PETROL 95	PETROL 93	DIESEL 0.05%	DIESEL 0.005%	ILL. PAR.
- MOVEMENT IN INTERNATIONAL PRODUCT PRICES	18.450	21.154	30.197	27.951	11.326
- MOVEMENT IN EXCHANGE RATE	15.252	14.885	15.463	15.579	16.009
AVERAGE UNIT OVER/(UNDER) RECOVERY 02/02/2018 - 19/02/2018	33.702	36.039	45.660	43.530	27.335

### R/\$ EXCHANGE RATE - (R/\$ 11.6688 - 19/02/2018)

#### EXCHANGE RATE USED IN BASIC FUEL PRICE



#### INTERNATIONAL PRODUCT PRICES OF BASKET USED IN BASIC FUEL PRICE



#### BASIC FUEL PRICE IN SA CENTS PER LITRE

