

## UPDATE OF THE BASIC FUEL PRICE

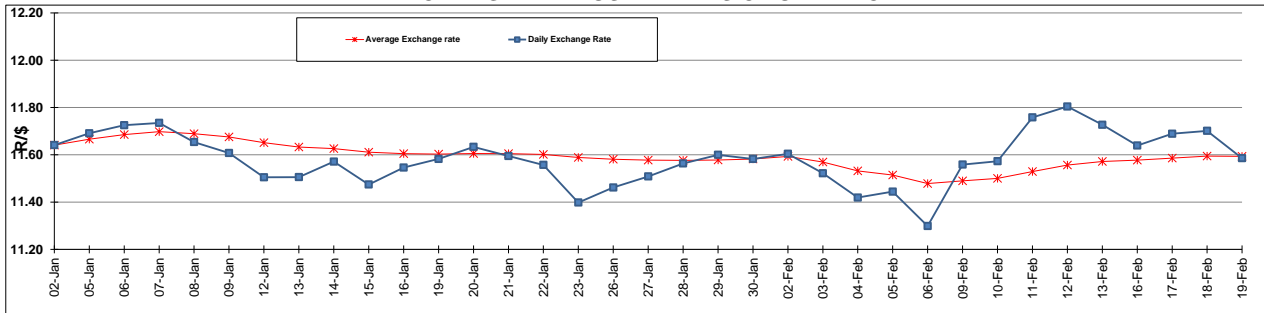
	PETROL 95 ULP	PETROL 93 ULP & LRP	DIESEL 0.05%	DIESEL 0.005%	ILL. PAR.
GAUTENG PUMP PRICE (SA c/l) AS FROM 04/02/2015	1,031.000	1,009.000	-	-	-
WHOLESALE PRICE (SA c/l) AS FROM 04/02/2015	-	-	926.090	930.490	645.928
SINGLE NATIONAL MAXIMUM RETAIL PRICE	-	-	-	-	833.000
BASIC FUEL PRICE - 19/02/2015 (SA c/l)	566.265	548.990	590.143	595.020	596.055
PRESS RELEASE CONTRIBUTION TO BFP 04/02/2015 - 19/02/2015 (SA c/l)	440.250	428.250	480.630	485.030	491.128
UNIT OVER/(UNDER) RECOVERY (SA c/l) - 19/02/2015	(126.015)	(120.740)	(109.513)	(109.990)	(104.927)
AVERAGE BASIC FUEL PRICE 30/01/2015 - 19/02/2015	543.499	526.935	565.304	569.125	577.133
AVERAGE UNIT OVER/(UNDER) RECOVERY 30/01/2015 - 19/02/2015	(84.649)	(80.085)	(64.274)	(63.695)	(65.605)

### ANALYSIS MOVEMENT OF AVERAGE OVER/(UNDER) RECOVERY

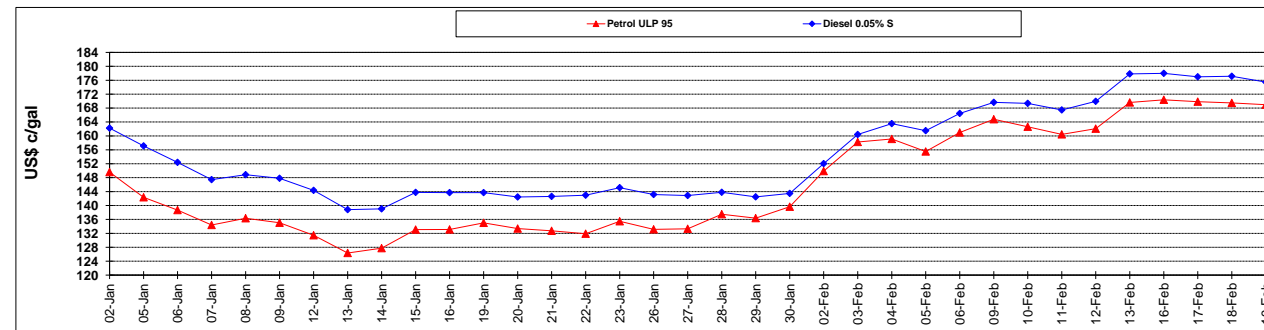
	PETROL 95	PETROL 93	DIESEL 0.05%	DIESEL 0.005%	ILL. PAR.
- MOVEMENT IN INTERNATIONAL PRODUCT PRICES	(83.899)	(79.358)	(63.494)	(62.910)	(64.809)
- MOVEMENT IN EXCHANGE RATE	(0.750)	(0.727)	(0.780)	(0.785)	(0.796)
AVERAGE UNIT OVER/(UNDER) RECOVERY 30/01/2015 - 19/02/2015	(84.649)	(80.085)	(64.274)	(63.695)	(65.605)

**R/\$ EXCHANGE RATE - (R/\$ 11.5857 - 19/02/2015)**

### EXCHANGE RATE USED IN BASIC FUEL PRICE



### INTERNATIONAL PRODUCT PRICES OF BASKET USED IN BASIC FUEL PRICE



### BASIC FUEL PRICE IN SA CENTS PER LITRE

