

UPDATE OF THE BASIC FUEL PRICE

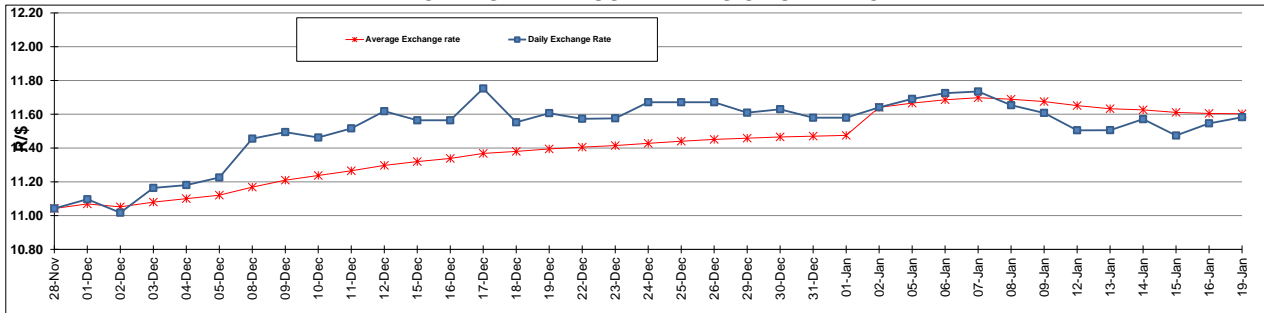
	PETROL 95 ULP	PETROL 93 ULP & LRP	DIESEL 0.05%	DIESEL 0.005%	ILL. PAR.
GAUTENG PUMP PRICE (SA c/l) AS FROM 07/01/2015	1,124.000	1,102.000	-	-	-
WHOLESALE PRICE (SA c/l) AS FROM 07/01/2015	-	-	1,028.090	1,032.490	747.928
SINGLE NATIONAL MAXIMUM RETAIL PRICE	-	-	-	-	969.000
BASIC FUEL PRICE - 19/01/2015 (SA c/l)	460.900	445.770	491.173	495.279	502.596
PRESS RELEASE CONTRIBUTION TO BFP 07/01/2015 - 19/01/2015 (SA c/l)	533.250	521.250	582.630	587.030	593.128
UNIT OVER/(UNDER) RECOVERY (SA c/l) - 19/01/2015	72.350	75.480	91.457	91.751	90.532
AVERAGE BASIC FUEL PRICE 02/01/2015 - 19/01/2015	462.577	449.938	503.664	507.737	511.232
AVERAGE UNIT OVER/(UNDER) RECOVERY 02/01/2015 - 19/01/2015	101.423	103.062	104.966	105.543	108.896

ANALYSIS MOVEMENT OF AVERAGE OVER/(UNDER) RECOVERY

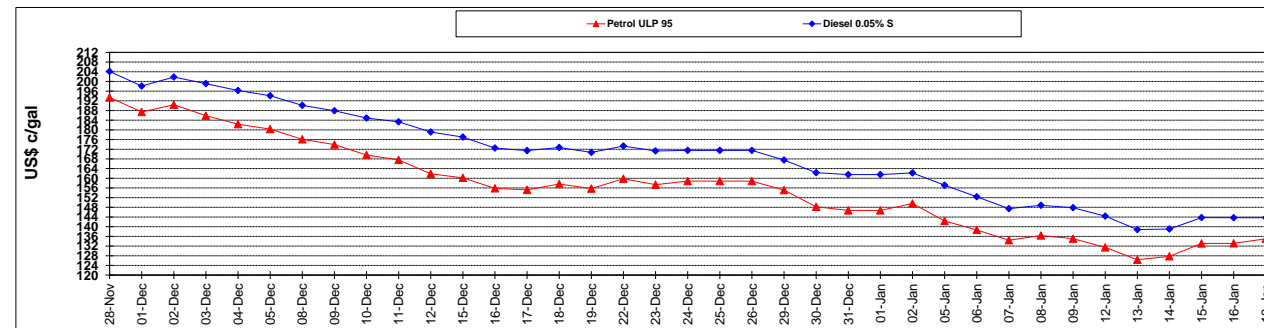
	PETROL 95	PETROL 93	DIESEL 0.05%	DIESEL 0.005%	ILL. PAR.
- MOVEMENT IN INTERNATIONAL PRODUCT PRICES	106.534	108.033	110.531	111.153	114.544
- MOVEMENT IN EXCHANGE RATE	(5.111)	(4.971)	(5.565)	(5.610)	(5.648)
AVERAGE UNIT OVER/(UNDER) RECOVERY 02/01/2015 - 19/01/2015	101.423	103.062	104.966	105.543	108.896

R/\$ EXCHANGE RATE - (R/\$ 11.5824 - 19/01/2015)

EXCHANGE RATE USED IN BASIC FUEL PRICE



INTERNATIONAL PRODUCT PRICES OF BASKET USED IN BASIC FUEL PRICE



BASIC FUEL PRICE IN SA CENTS PER LITRE

