

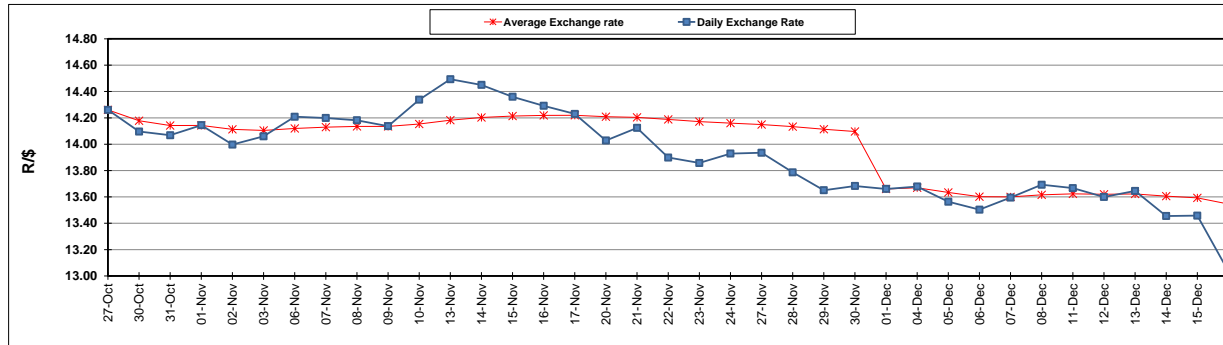
	PETROL 95 ULP	PETROL 93 ULP & LRP	DIESEL 0.05%	DIESEL 0.005%	ILL. PAR.
GAUTENG PUMP PRICE (SA c/l) AS FROM 07/12/2017	1 476.000	1 449.000	-	-	-
WHOLESALE PRICE (SA c/l) AS FROM 07/12/2017	-	-	1 295.630	1 302.030	865.388
SINGLE NATIONAL MAXIMUM RETAIL PRICE	-	-	-	-	1 119.000
BASIC FUEL PRICE - 18/12/2017 (SA c/l)	629.905	619.569	642.799	645.287	642.997
PRESS RELEASE CONTRIBUTION TO BFP 05/12/2017 - 18/12/2017 (SA c/l)	686.170	669.170	684.630	691.030	695.128
UNIT OVER/(UNDER) RECOVERY - 18/12/2017 (SA c/l)	56.265	49.601	41.831	45.743	52.131
AVERAGE BASIC FUEL PRICE 01/12/2017 - 18/12/2017	653.698	641.092	662.580	666.196	665.029
AVERAGE UNIT OVER/(UNDER) RECOVERY 01/12/2017 - 18/12/2017	15.697	11.303	6.800	10.334	11.599

ANALYSIS MOVEMENT OF AVERAGE OVER/(UNDER) RECOVERY

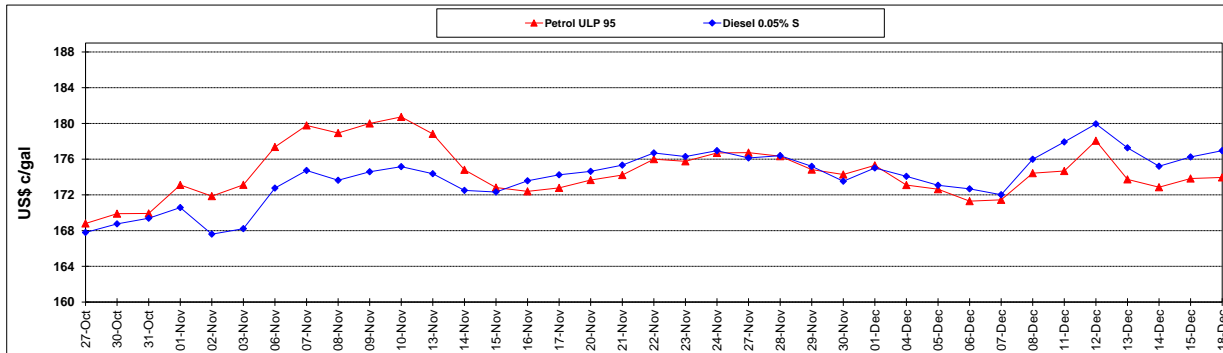
	PETROL 95	PETROL 93	DIESEL 0.05%	DIESEL 0.005%	ILL. PAR.
- MOVEMENT IN INTERNATIONAL PRODUCT PRICES	(10.859)	(14.741)	(20.117)	(16.730)	(15.417)
- MOVEMENT IN EXCHANGE RATE	26.556	26.044	26.917	27.064	27.016
AVERAGE UNIT OVER/(UNDER) RECOVERY 01/12/2017 - 18/12/2017	15.697	11.303	6.800	10.334	11.599

R/\$ EXCHANGE RATE - (R/\$ 13.0343 - 18/12/2017)

EXCHANGE RATE USED IN BASIC FUEL PRICE



INTERNATIONAL PRODUCT PRICES OF BASKET USED IN BASIC FUEL PRICE



BASIC FUEL PRICE IN SA CENTS PER LITRE

