

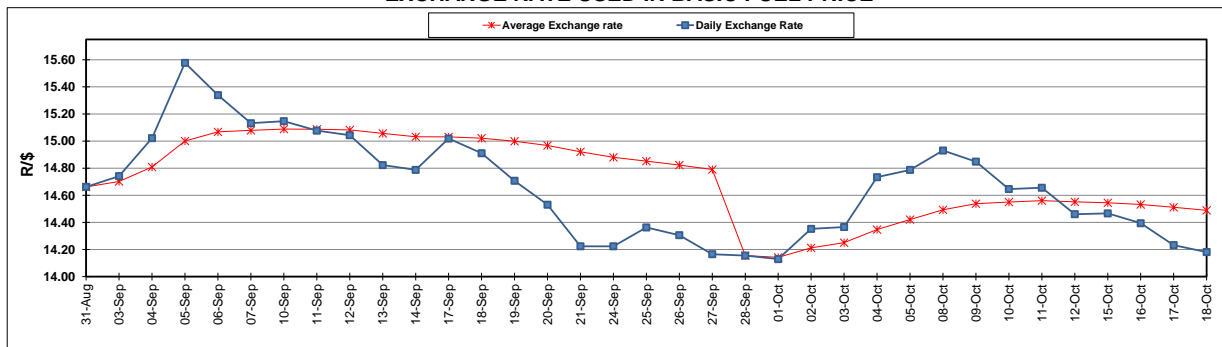
	PETROL 95 ULP	PETROL 93 ULP & LRP	DIESEL 0.05%	DIESEL 0.005%	ILL. PAR.
GAUTENG PUMP PRICE (SA c/l) AS FROM 03/10/2018	1 708.000	1 685.000	-	-	-
WHOLESALE PRICE (SA c/l) AS FROM 03/10/2018	-	-	1 564.830	1 569.230	1 057.088
SINGLE NATIONAL MAXIMUM RETAIL PRICE	-	-	-	-	1 372.000
BASIC FUEL PRICE - 18/10/2018 (SA c/l)	775.697	764.282	876.277	882.749	876.189
PRESS RELEASE CONTRIBUTION TO BFP 03/10/2018 - 18/10/2018 (SA c/l)	851.170	838.170	891.630	896.030	884.128
UNIT OVER/(UNDER) RECOVERY - 18/10/2018 (SA c/l)	75.473	73.888	15.353	13.281	7.939
AVERAGE BASIC FUEL PRICE 28/09/2018 - 18/10/2018	846.269	832.908	914.453	921.722	911.650
AVERAGE UNIT OVER/(UNDER) RECOVERY 28/09/2018 - 18/10/2018	(15.099)	(14.538)	(47.623)	(50.492)	(48.322)

ANALYSIS MOVEMENT OF AVERAGE OVER/(UNDER) RECOVERY

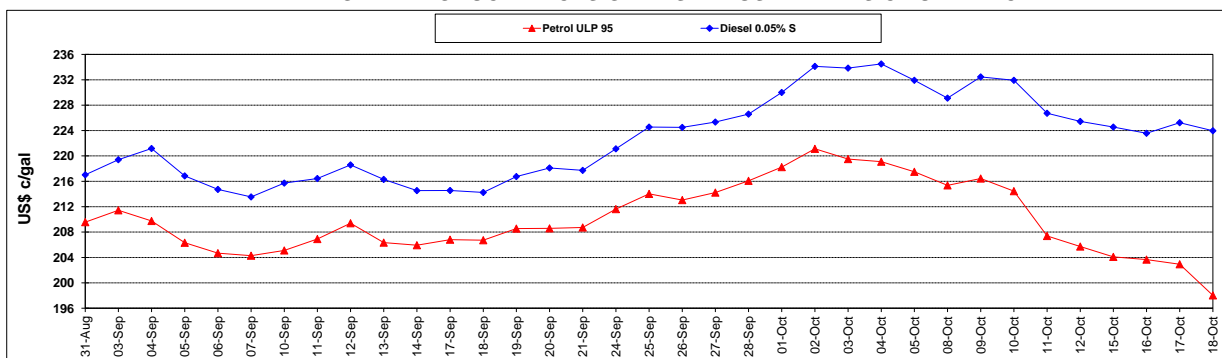
	PETROL 95	PETROL 93	DIESEL 0.05%	DIESEL 0.005%	ILL. PAR.
- MOVEMENT IN INTERNATIONAL PRODUCT PRICES	(32.662)	(31.824)	(66.601)	(69.621)	(67.242)
- MOVEMENT IN EXCHANGE RATE	17.563	17.286	18.978	19.129	18.920
AVERAGE UNIT OVER/(UNDER) RECOVERY 28/09/2018 - 18/10/2018	(15.099)	(14.538)	(47.623)	(50.492)	(48.322)

R/\$ EXCHANGE RATE - (R/\$14.1808 - 18/10/2018)

EXCHANGE RATE USED IN BASIC FUEL PRICE



INTERNATIONAL PRODUCT PRICES OF BASKET USED IN BASIC FUEL PRICE



BASIC FUEL PRICE IN SA CENTS PER LITRE

