

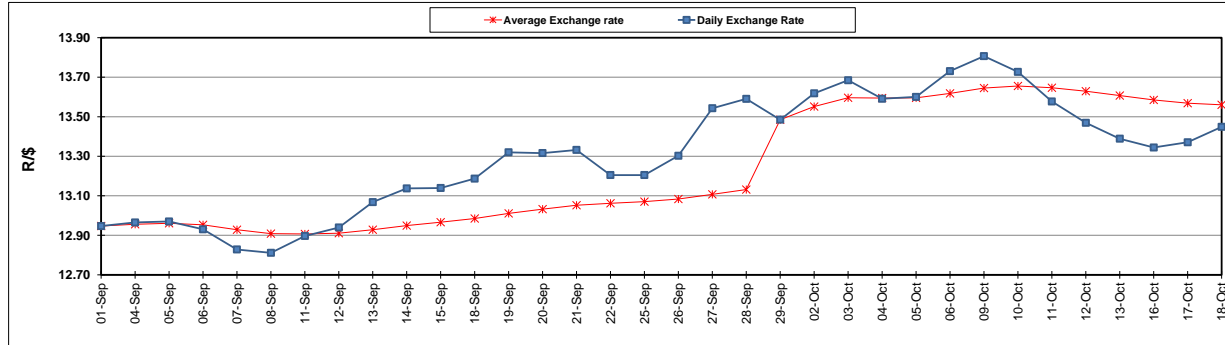
	PETROL 95 ULP	PETROL 93 ULP & LRP	DIESEL 0.05%	DIESEL 0.005%	ILL. PAR.
GAUTENG PUMP PRICE (SA c/l) AS FROM 04/10/2017	1 401.000	1 374.000	-	-	-
WHOLESALE PRICE (SA c/l) AS FROM 04/10/2017	-	-	1 212.330	1 217.730	771.088
SINGLE NATIONAL MAXIMUM RETAIL PRICE	-	-	-	-	992.000
BASIC FUEL PRICE - 18/10/2017 (SA c/l)	616.414	600.139	618.109	627.035	612.435
PRESS RELEASE CONTRIBUTION TO BFP 04/10/2017 - 18/10/2017 (SA c/l)	615.070	598.070	600.630	606.030	600.128
UNIT OVER/(UNDER) RECOVERY (SA c/l) - 18/10/2017	(1.344)	(2.069)	(17.479)	(21.005)	(12.307)
AVERAGE BASIC FUEL PRICE 29/09/2017 - 18/10/2017	609.957	593.659	613.412	623.058	608.721
AVERAGE UNIT OVER/(UNDER) RECOVERY 29/09/2017 - 18/10/2017	(1.102)	(0.946)	(21.782)	(26.028)	(16.950)

### ANALYSIS MOVEMENT OF AVERAGE OVER/(UNDER) RECOVERY

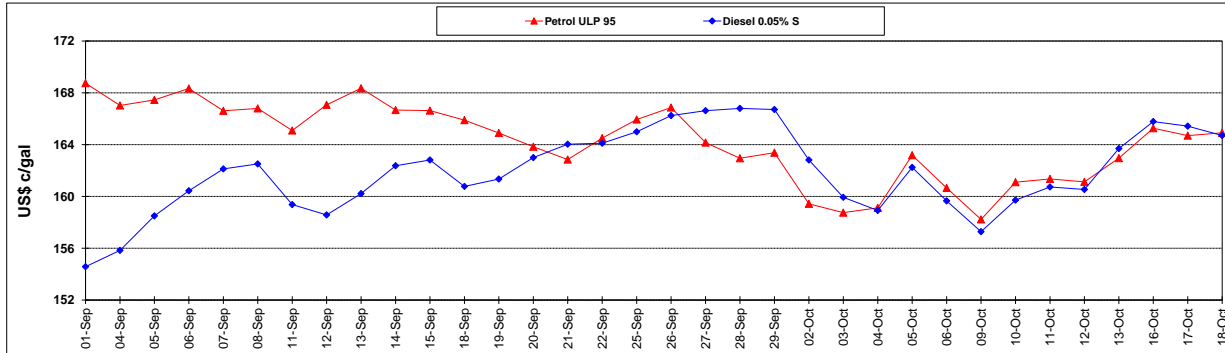
	PETROL 95	PETROL 93	DIESEL 0.05%	DIESEL 0.005%	ILL. PAR.
- MOVEMENT IN INTERNATIONAL PRODUCT PRICES	18.174	17.814	(2.398)	(6.339)	2.285
- MOVEMENT IN EXCHANGE RATE	(19.275)	(18.760)	(19.384)	(19.689)	(19.235)
AVERAGE UNIT OVER/(UNDER) RECOVERY 29/09/2017 - 18/10/2017	(1.102)	(0.946)	(21.782)	(26.028)	(16.950)

R/\$ EXCHANGE RATE - (R/\$ 13.4488- 18/10/2017)

### EXCHANGE RATE USED IN BASIC FUEL PRICE



### INTERNATIONAL PRODUCT PRICES OF BASKET USED IN BASIC FUEL PRICE



### BASIC FUEL PRICE IN SA CENTS PER LITRE

