

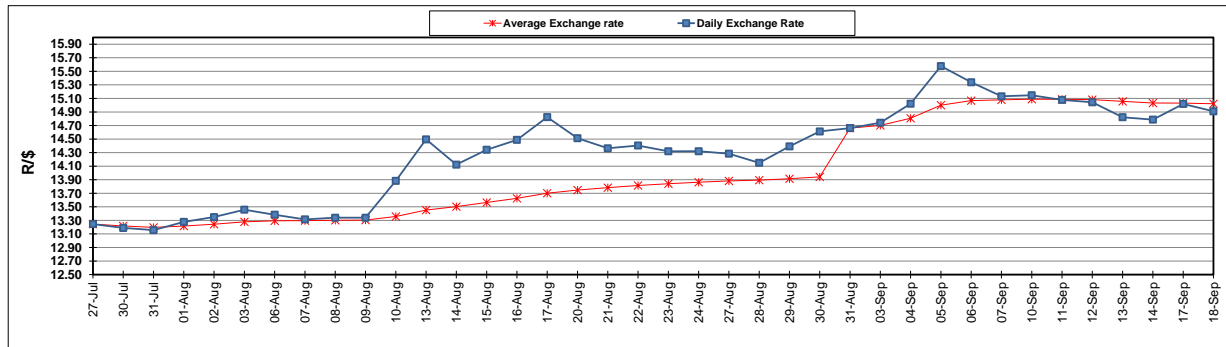
	PETROL 95 ULP	PETROL 93 ULP & LRP	DIESEL 0.05%	DIESEL 0.005%	ILL. PAR.
GAUTENG PUMP PRICE (SA c/l) AS FROM 05/09/2018	1 608.000	1 586.000	-	-	-
WHOLESALE PRICE (SA c/l) AS FROM 05/09/2018	-	-	1 440.830	1 445.230	953.088
SINGLE NATIONAL MAXIMUM RETAIL PRICE	-	-	-	-	1 233.000
BASIC FUEL PRICE - 18/09/2018 (SA c/l)	850.477	835.025	883.361	887.622	880.988
PRESS RELEASE CONTRIBUTION TO BFP 05/09/2018 - 18/09/2018 (SA c/l)	751.170	739.170	767.630	772.030	780.128
UNIT OVER/(UNDER) RECOVERY - 18/09/2018 (SA c/l)	(99.307)	(95.855)	(115.731)	(115.592)	(100.860)
AVERAGE BASIC FUEL PRICE 31/08/2018 - 18/09/2018	858.576	845.976	898.512	903.313	892.070
AVERAGE UNIT OVER/(UNDER) RECOVERY 31/08/2018 - 18/09/2018	(107.429)	(106.829)	(130.882)	(131.283)	(111.942)

### ANALYSIS MOVEMENT OF AVERAGE OVER/(UNDER) RECOVERY

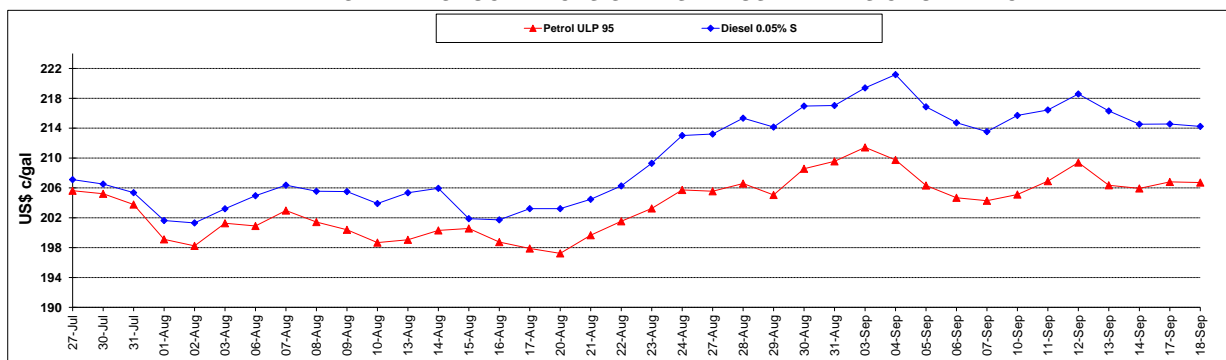
	PETROL 95	PETROL 93	DIESEL 0.05%	DIESEL 0.005%	ILL. PAR.
- MOVEMENT IN INTERNATIONAL PRODUCT PRICES	(45.786)	(46.090)	(66.371)	(66.428)	(47.894)
- MOVEMENT IN EXCHANGE RATE	(61.643)	(60.739)	(64.511)	(64.855)	(64.048)
AVERAGE UNIT OVER/(UNDER) RECOVERY 31/08/2018 - 18/09/2018	(107.429)	(106.829)	(130.882)	(131.283)	(111.942)

### R/\$ EXCHANGE RATE - (R/\$14.9103 - 18/09/2018)

#### EXCHANGE RATE USED IN BASIC FUEL PRICE



#### INTERNATIONAL PRODUCT PRICES OF BASKET USED IN BASIC FUEL PRICE



#### BASIC FUEL PRICE IN SA CENTS PER LITRE

