

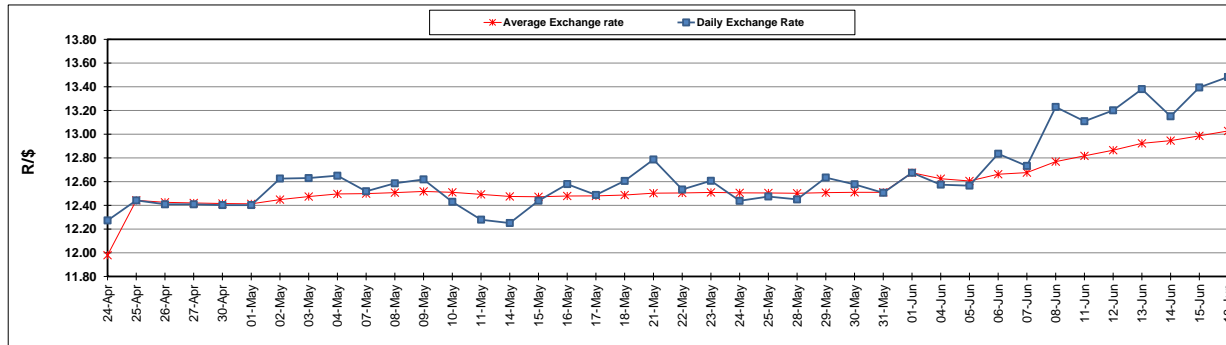
	PETROL 95 ULP	PETROL 93 ULP & LRP	DIESEL 0.05%	DIESEL 0.005%	ILL. PAR.
GAUTENG PUMP PRICE (SA c/l) AS FROM 06/06/2018	1 579.000	1 554.000	-	-	-
WHOLESALE PRICE (SA c/l) AS FROM 06/06/2018	-	-	1 418.830	1 425.230	927.088
SINGLE NATIONAL MAXIMUM RETAIL PRICE	-	-	-	-	1 198.000
BASIC FUEL PRICE - 18/06/2018 (SA c/l)	731.319	719.674	752.852	756.788	758.744
PRESS RELEASE CONTRIBUTION TO BFP 06/06/2018 - 18/06/2018 (SA c/l)	727.070	712.070	745.630	752.030	754.128
UNIT OVER/(UNDER) RECOVERY - 18/06/2018 (SA c/l)	(4.249)	(7.604)	(7.222)	(4.758)	(4.616)
AVERAGE BASIC FUEL PRICE 01/06/2018 - 18/06/2018	732.510	720.583	751.089	755.121	753.479
AVERAGE UNIT OVER/(UNDER) RECOVERY 01/06/2018 - 18/06/2018	(25.940)	(29.013)	(26.709)	(24.841)	(19.851)

ANALYSIS MOVEMENT OF AVERAGE OVER/(UNDER) RECOVERY

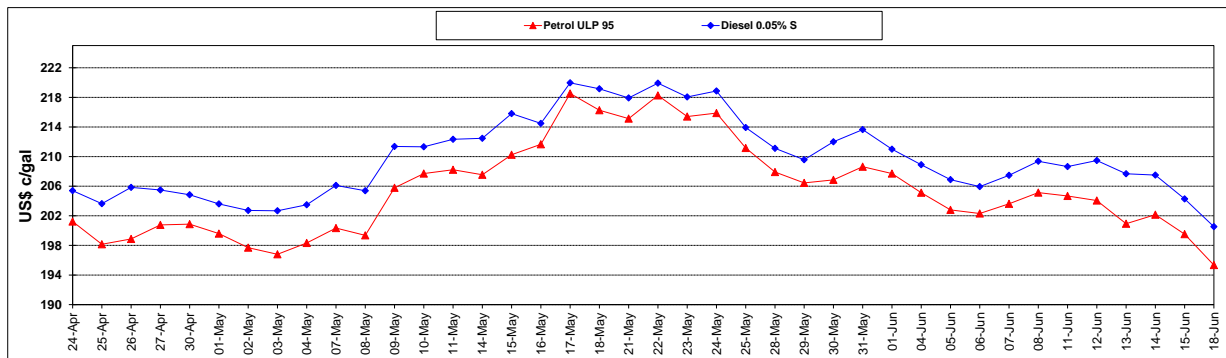
	PETROL 95	PETROL 93	DIESEL 0.05%	DIESEL 0.005%	ILL. PAR.
- MOVEMENT IN INTERNATIONAL PRODUCT PRICES	3.164	(0.383)	3.133	5.161	10.086
- MOVEMENT IN EXCHANGE RATE	(29.104)	(28.630)	(29.842)	(30.002)	(29.937)
AVERAGE UNIT OVER/(UNDER) RECOVERY 01/06/2018 - 18/06/2018	(25.940)	(29.013)	(26.709)	(24.841)	(19.851)

R/\$ EXCHANGE RATE - (R/\$13.4825 - 18/06/2018)

EXCHANGE RATE USED IN BASIC FUEL PRICE



INTERNATIONAL PRODUCT PRICES OF BASKET USED IN BASIC FUEL PRICE



BASIC FUEL PRICE IN SA CENTS PER LITRE

