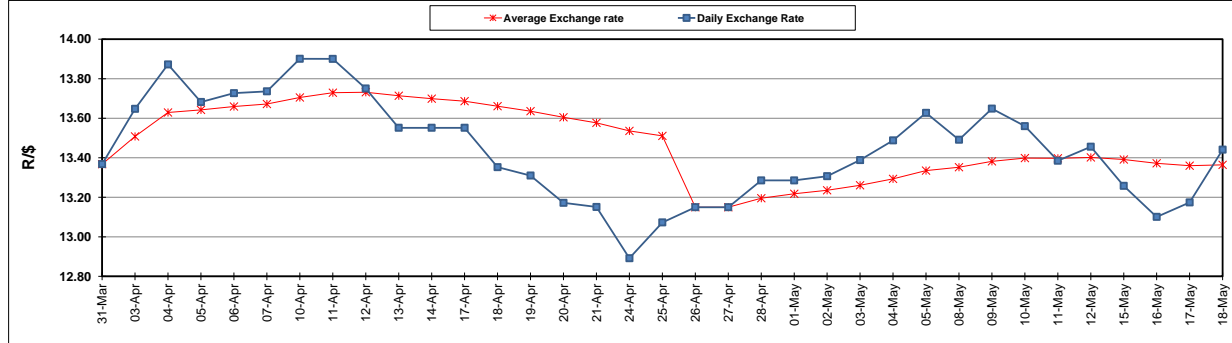


	PETROL 95 ULP	PETROL 93 ULP & LRP	DIESEL 0.05%	DIESEL 0.005%	ILL. PAR.
GAUTENG PUMP PRICE (SA c/l) AS FROM 03/05/2017	1 379.000	1 357.000	-	-	-
WHOLESALE PRICE (SA c/l) AS FROM 03/05/2017	-	-	1 180.330	1 184.730	736.088
SINGLE NATIONAL MAXIMUM RETAIL PRICE	-	-	-	-	947.000
BASIC FUEL PRICE - 18/05/2017 (SA c/l)	577.905	561.405	554.412	557.847	550.631
PRESS RELEASE CONTRIBUTION TO BFP 03/05/2017 - 18/05/2017 (SA c/l)	597.670	585.670	568.630	573.030	565.128
UNIT OVER/(UNDER) RECOVERY (SA c/l) - 18/05/2017	19.765	24.265	14.218	15.183	14.497
AVERAGE BASIC FUEL PRICE 26/04/2017 - 18/05/2017	561.716	545.240	538.434	541.940	532.674
AVERAGE UNIT OVER/(UNDER) RECOVERY 26/04/2017- 18/05/2017	21.543	26.018	21.373	21.678	22.454

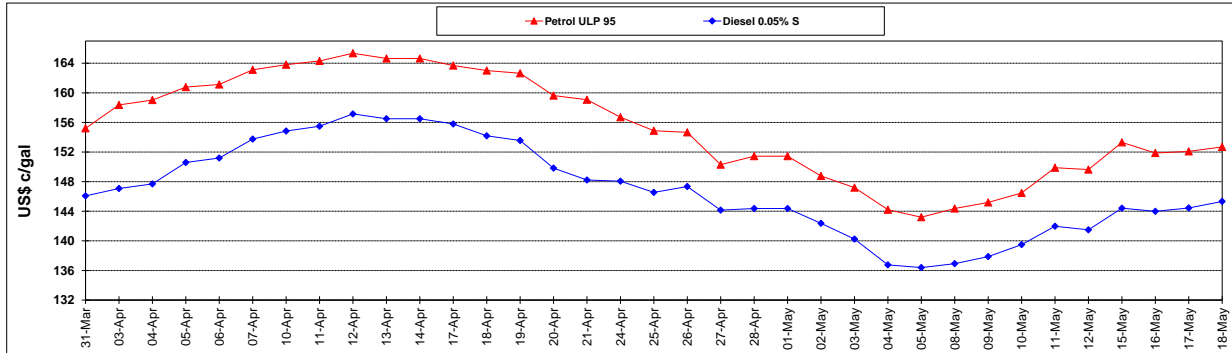
ANALYSIS MOVEMENT OF AVERAGE OVER/(UNDER) RECOVERY					
	PETROL 95	PETROL 93	DIESEL 0.05%	DIESEL 0.005%	ILL. PAR.
- MOVEMENT IN INTERNATIONAL PRODUCT PRICES	15.397	20.053	15.482	15.749	16.627
- MOVEMENT IN EXCHANGE RATE	6.145	5.965	5.890	5.929	5.827
AVERAGE UNIT OVER/(UNDER) RECOVERY 26/04/2017 - 18/05/2017	21.543	26.018	21.373	21.678	22.454

R/\$ EXCHANGE RATE - (R/\$ 13.4410 - 18/05/2017)

EXCHANGE RATE USED IN BASIC FUEL PRICE



INTERNATIONAL PRODUCT PRICES OF BASKET USED IN BASIC FUEL PRICE



BASIC FUEL PRICE IN SA CENTS PER LITRE

