

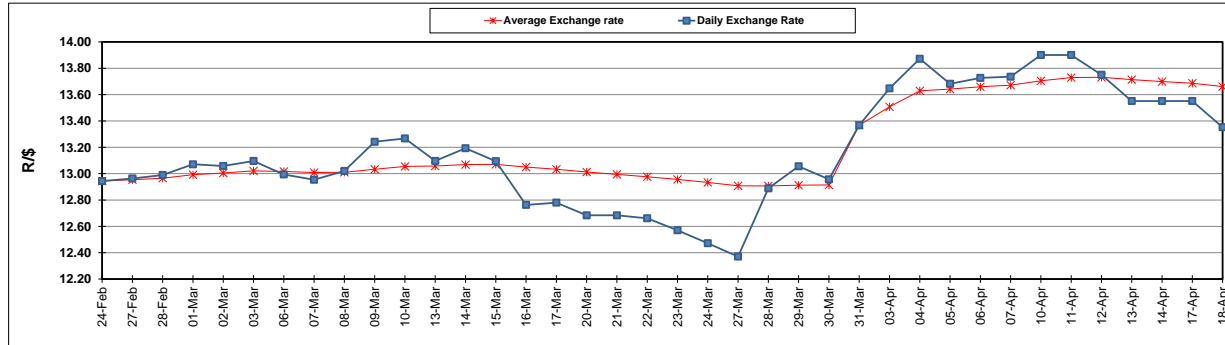
	PETROL 95 ULP	PETROL 93 ULP & LRP	DIESEL 0.05%	DIESEL 0.005%	ILL. PAR.
GAUTENG PUMP PRICE (SA c/l) AS FROM 05/04/2017	1 330.000	1 308.000	-	-	-
WHOLESALE PRICE (SA c/l) AS FROM 05/04/2017	-	-	1 150.330	1 152.730	702.088
SINGLE NATIONAL MAXIMUM RETAIL PRICE	-	-	-	-	901.000
BASIC FUEL PRICE - 18/04/2017 (SA c/l)	608.067	593.996	579.376	583.303	574.900
PRESS RELEASE CONTRIBUTION TO BFP 05/04/2017 - 18/04/2017 (SA c/l)	548.670	536.670	538.630	541.030	531.128
UNIT OVER/(UNDER) RECOVERY (SA c/l) - 18/04/2017	(59.397)	(57.326)	(40.746)	(42.273)	(43.772)
AVERAGE BASIC FUEL PRICE 31/03/2017 - 18/04/2017	618.727	602.286	587.845	591.907	584.712
AVERAGE UNIT OVER/(UNDER) RECOVERY 31/03/2017- 18/04/2017	(55.242)	(51.262)	(37.676)	(39.339)	(41.584)

### ANALYSIS MOVEMENT OF AVERAGE OVER/(UNDER) RECOVERY

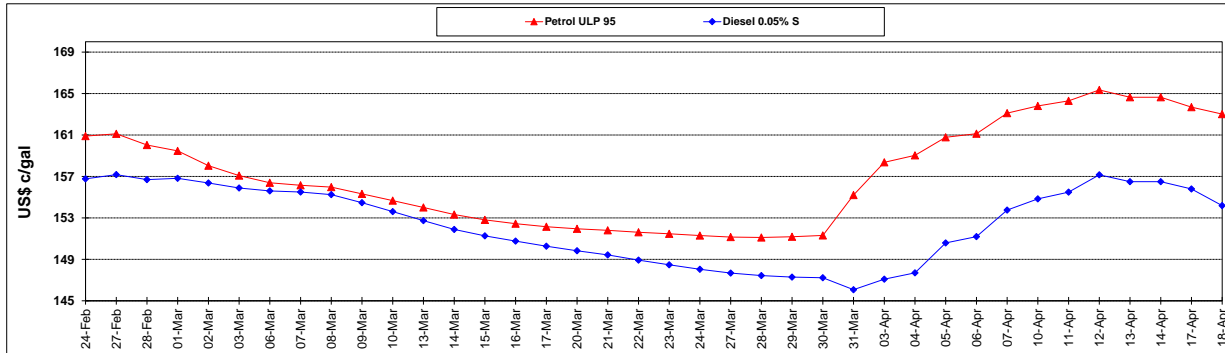
	PETROL 95	PETROL 93	DIESEL 0.05%	DIESEL 0.005%	ILL. PAR.
- MOVEMENT IN INTERNATIONAL PRODUCT PRICES	(21.450)	(18.368)	(5.571)	(7.012)	(9.650)
- MOVEMENT IN EXCHANGE RATE	(33.792)	(32.894)	(32.106)	(32.327)	(31.934)
AVERAGE UNIT OVER/(UNDER) RECOVERY 31/03/2017 - 18/04/2017	(55.242)	(51.262)	(37.676)	(39.339)	(41.584)

**R/\$ EXCHANGE RATE - (R/\$ 13.3525 - 18/04/2017)**

### EXCHANGE RATE USED IN BASIC FUEL PRICE



### INTERNATIONAL PRODUCT PRICES OF BASKET USED IN BASIC FUEL PRICE



### BASIC FUEL PRICE IN SA CENTS PER LITRE

