

UPDATE OF THE BASIC FUEL PRICE

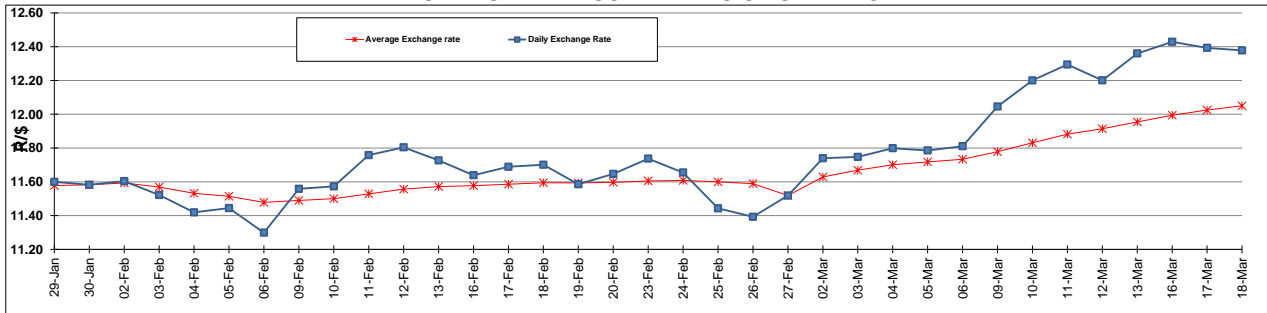
	PETROL 95 ULP	PETROL 93 ULP & LRP	DIESEL 0.05%	DIESEL 0.005%	ILL. PAR.
GAUTENG PUMP PRICE (SA c/l) AS FROM 04/03/2015	1,127.000	1,105.000	-	-	-
WHOLESALE PRICE (SA c/l) AS FROM 04/03/2015	-	-	1,000.090	1,004.490	718.928
SINGLE NATIONAL MAXIMUM RETAIL PRICE	-	-	-	-	931.000
BASIC FUEL PRICE - 18/03/2015 (SA c/l)	587.098	567.291	572.342	580.303	561.906
PRESS RELEASE CONTRIBUTION TO BFP 04/03/2015 - 18/03/2015 (SA c/l)	536.250	524.250	554.630	559.030	564.128
UNIT OVER/(UNDER) RECOVERY (SA c/l) - 18/03/2015	(50.848)	(43.041)	(17.712)	(21.273)	2.222
AVERAGE BASIC FUEL PRICE 27/02/2015 - 18/03/2015	603.782	586.154	591.327	596.935	581.455
AVERAGE UNIT OVER/(UNDER) RECOVERY 27/02/2015 - 18/03/2015	(88.103)	(82.475)	(52.554)	(53.762)	(32.970)

ANALYSIS MOVEMENT OF AVERAGE OVER/(UNDER) RECOVERY

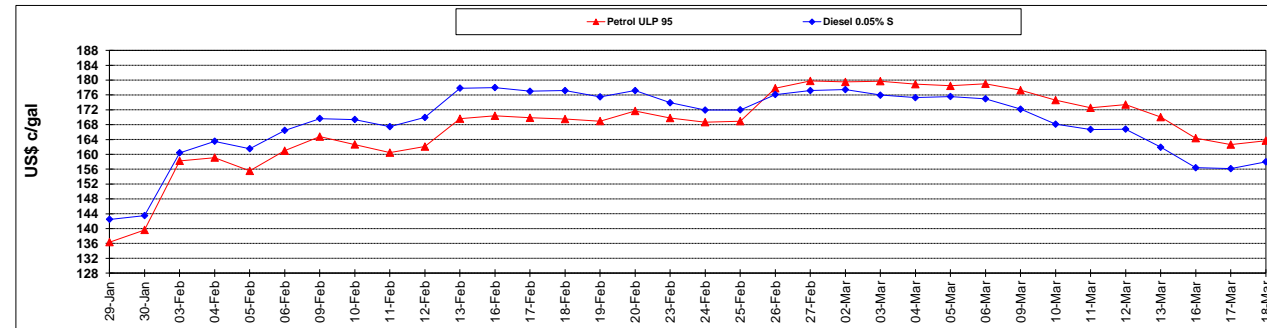
	PETROL 95	PETROL 93	DIESEL 0.05%	DIESEL 0.005%	ILL. PAR.
- MOVEMENT IN INTERNATIONAL PRODUCT PRICES	(64.994)	(60.041)	(29.922)	(30.915)	(10.716)
- MOVEMENT IN EXCHANGE RATE	(23.109)	(22.434)	(22.632)	(22.847)	(22.254)
AVERAGE UNIT OVER/(UNDER) RECOVERY 27/02/2015 - 18/03/2015	(88.103)	(82.475)	(52.554)	(53.762)	(32.970)

R/\$ EXCHANGE RATE - (R/\$ 12.3783 - 18/03/2015)

EXCHANGE RATE USED IN BASIC FUEL PRICE



INTERNATIONAL PRODUCT PRICES OF BASKET USED IN BASIC FUEL PRICE



BASIC FUEL PRICE IN SA CENTS PER LITRE

