

UPDATE OF THE BASIC FUEL PRICE

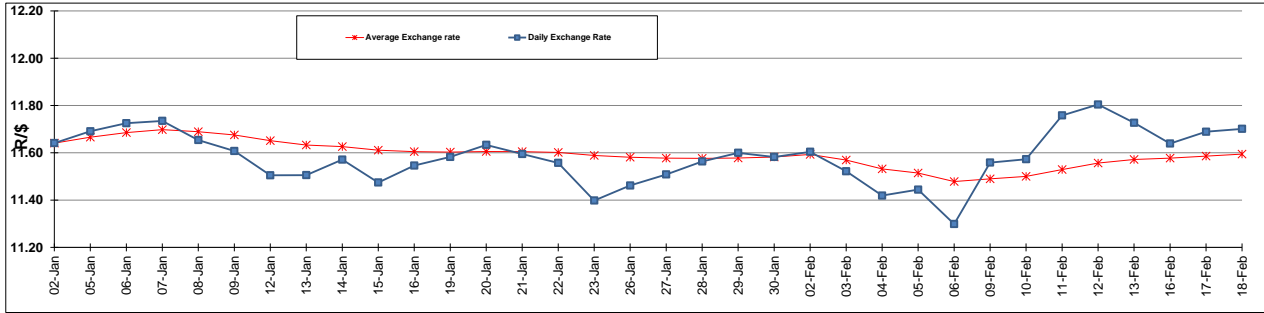
| | PETROL 95 ULP | PETROL 93 ULP & LRP | DIESEL 0.05% | DIESEL 0.005% | ILL. PAR. |
|--|------------------|------------------------|-----------------|------------------|-----------|
| GAUTENG PUMP PRICE (SA c/l) AS FROM 04/02/2015 | 1,031.000 | 1,009.000 | - | - | - |
| WHOLESALE PRICE (SA c/l) AS FROM 04/02/2015 | - | - | 926.090 | 930.490 | 645.928 |
| SINGLE NATIONAL MAXIMUM RETAIL PRICE | - | - | - | - | 833.000 |
| BASIC FUEL PRICE - 18/02/2015 (SA c/l) | 573.486 | 556.039 | 601.161 | 606.193 | 608.960 |
| PRESS RELEASE CONTRIBUTION TO BFP 04/02/2015 - 18/02/2015 (SA c/l) | 440.250 | 428.250 | 480.630 | 485.030 | 491.128 |
| UNIT OVER/(UNDER) RECOVERY (SA c/l) - 18/02/2015 | (133.236) | (127.789) | (120.531) | (121.163) | (117.832) |
| AVERAGE BASIC FUEL PRICE 30/01/2015 - 18/02/2015 | 541.873 | 525.359 | 563.530 | 567.275 | 575.781 |
| AVERAGE UNIT OVER/(UNDER) RECOVERY 30/01/2015 - 18/02/2015 | (81.695) | (77.181) | (61.043) | (60.388) | (62.796) |

ANALYSIS MOVEMENT OF AVERAGE OVER/(UNDER) RECOVERY

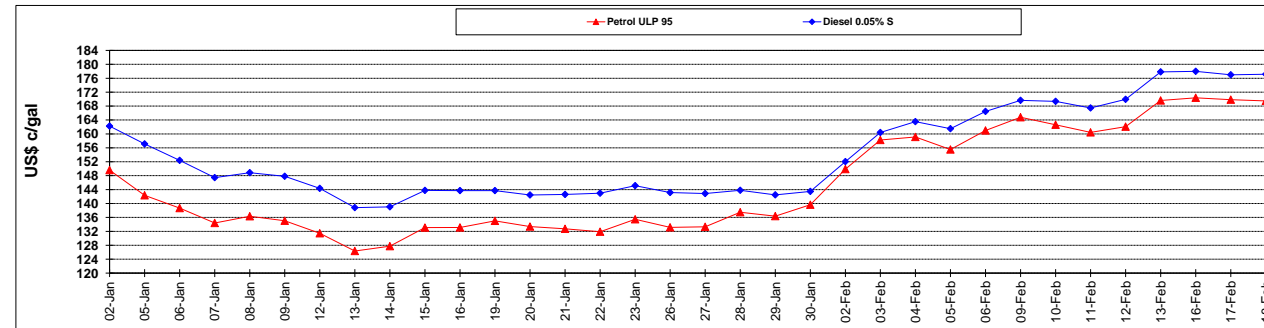
| | PETROL 95 | PETROL 93 | DIESEL 0.05% | DIESEL 0.005% | ILL. PAR. |
|--|-----------|-----------|--------------|---------------|-----------|
| - MOVEMENT IN INTERNATIONAL PRODUCT PRICES | (80.918) | (76.428) | (60.236) | (59.576) | (61.972) |
| - MOVEMENT IN EXCHANGE RATE | (0.776) | (0.752) | (0.807) | (0.812) | (0.824) |
| AVERAGE UNIT OVER/(UNDER) RECOVERY 30/01/2015 - 18/02/2015 | (81.695) | (77.181) | (61.043) | (60.388) | (62.796) |

R/\$ EXCHANGE RATE - (R/\$ 11.7011 - 18/02/2015)

EXCHANGE RATE USED IN BASIC FUEL PRICE



INTERNATIONAL PRODUCT PRICES OF BASKET USED IN BASIC FUEL PRICE



BASIC FUEL PRICE IN SA CENTS PER LITRE

