

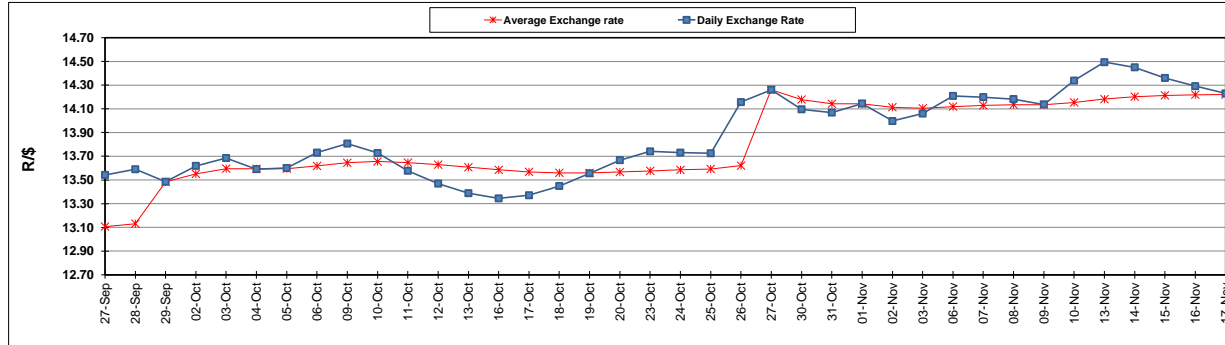
	PETROL 95 ULP	PETROL 93 ULP & LRP	DIESEL 0.05%	DIESEL 0.005%	ILL. PAR.
GAUTENG PUMP PRICE (SA c/l) AS FROM 01/11/2017	1 405.000	1 378.000	-	-	-
WHOLESALE PRICE (SA c/l) AS FROM 01/11/2017	-	-	1 235.330	1 244.730	792.088
SINGLE NATIONAL MAXIMUM RETAIL PRICE	-	-	-	-	1 021.000
BASIC FUEL PRICE -17/11/2017 (SA c/l)	684.940	669.041	693.362	696.885	701.002
PRESS RELEASE CONTRIBUTION TO BFP 01/11/2017 - 17/11/2017 (SA c/l)	619.070	602.070	623.630	633.030	621.128
UNIT OVER/(UNDER) RECOVERY (SA c/l) - 17/11/2017	(65.870)	(66.971)	(69.732)	(63.855)	(79.874)
AVERAGE BASIC FUEL PRICE 27/10/2017 - 17/11/2017	691.073	675.256	683.338	689.914	693.199
AVERAGE UNIT OVER/(UNDER) RECOVERY 27/10/2017 - 17/11/2017	(72.753)	(73.936)	(64.021)	(61.946)	(76.008)

### ANALYSIS MOVEMENT OF AVERAGE OVER/(UNDER) RECOVERY

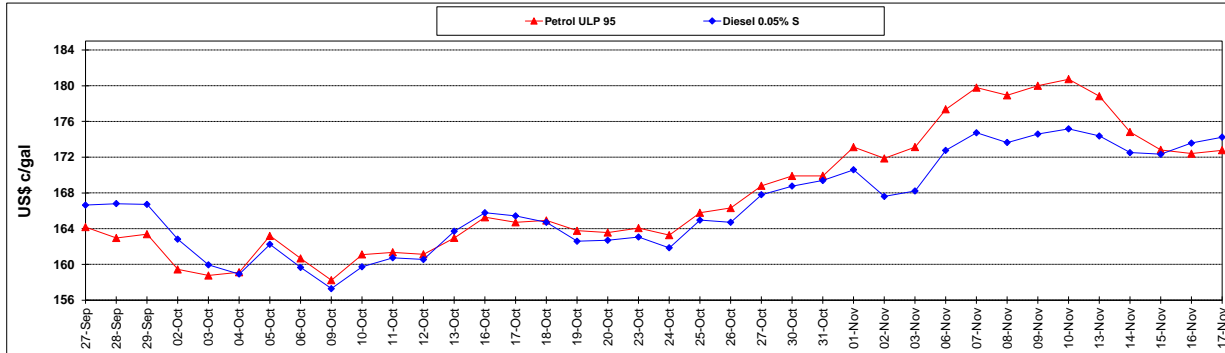
	PETROL 95	PETROL 93	DIESEL 0.05%	DIESEL 0.005%	ILL. PAR.
- MOVEMENT IN INTERNATIONAL PRODUCT PRICES	(43.652)	(45.501)	(35.244)	(32.894)	(46.817)
- MOVEMENT IN EXCHANGE RATE	(29.101)	(28.435)	(28.776)	(29.052)	(29.191)
AVERAGE UNIT OVER/(UNDER) RECOVERY 27/10/2017 - 17/11/2017	(72.753)	(73.936)	(64.021)	(61.946)	(76.008)

### R/\$ EXCHANGE RATE - (R/\$ 14.2300- 17/11/2017)

#### EXCHANGE RATE USED IN BASIC FUEL PRICE



#### INTERNATIONAL PRODUCT PRICES OF BASKET USED IN BASIC FUEL PRICE



#### BASIC FUEL PRICE IN SA CENTS PER LITRE

