

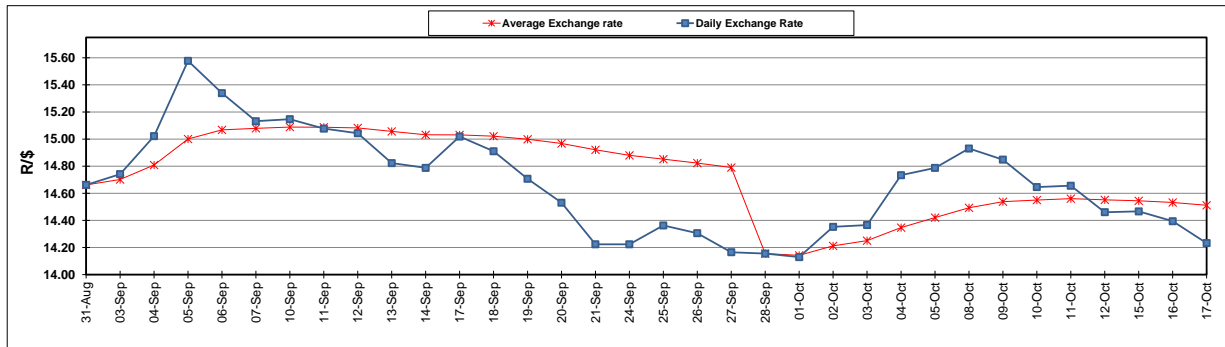
	PETROL 95 ULP	PETROL 93 ULP & LRP	DIESEL 0.05%	DIESEL 0.005%	ILL. PAR.
GAUTENG PUMP PRICE (SA c/l) AS FROM 03/10/2018	1 708.000	1 685.000	-	-	-
WHOLESALE PRICE (SA c/l) AS FROM 03/10/2018	-	-	1 564.830	1 569.230	1 057.088
SINGLE NATIONAL MAXIMUM RETAIL PRICE	-	-	-	-	1 372.000
BASIC FUEL PRICE - 17/10/2018 (SA c/l)	797.066	785.250	884.269	891.514	883.117
PRESS RELEASE CONTRIBUTION TO BFP 03/10/2018 - 17/10/2018 (SA c/l)	851.170	838.170	891.630	896.030	884.128
UNIT OVER/(UNDER) RECOVERY - 17/10/2018 (SA c/l)	54.104	52.920	7.361	4.516	1.011
AVERAGE BASIC FUEL PRICE 28/09/2018 - 17/10/2018	851.309	837.810	917.180	924.506	914.183
AVERAGE UNIT OVER/(UNDER) RECOVERY 28/09/2018 - 17/10/2018	(21.568)	(20.855)	(52.122)	(55.047)	(52.340)

ANALYSIS MOVEMENT OF AVERAGE OVER/(UNDER) RECOVERY

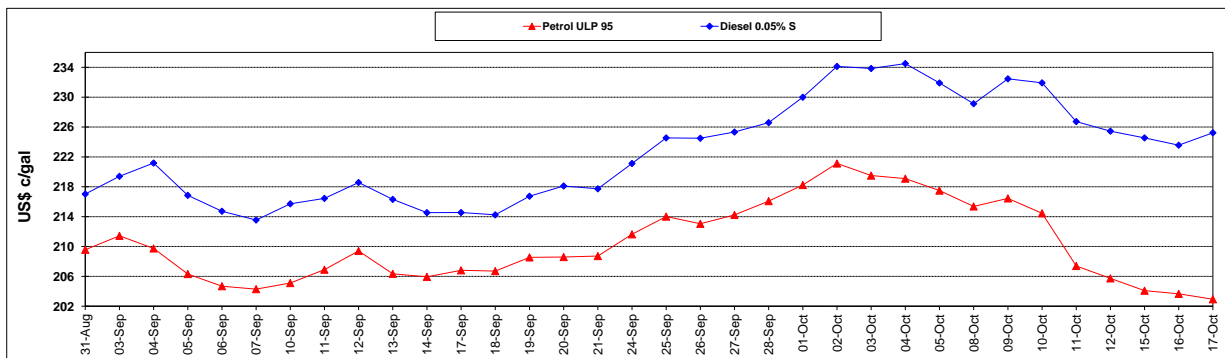
	PETROL 95	PETROL 93	DIESEL 0.05%	DIESEL 0.005%	ILL. PAR.
- MOVEMENT IN INTERNATIONAL PRODUCT PRICES	(37.918)	(36.945)	(69.736)	(72.803)	(69.899)
- MOVEMENT IN EXCHANGE RATE	16.350	16.091	17.615	17.756	17.558
AVERAGE UNIT OVER/(UNDER) RECOVERY 28/09/2018 - 17/10/2018	(21.568)	(20.855)	(52.122)	(55.047)	(52.340)

R/\$ EXCHANGE RATE - (R/\$14.2325 - 17/10/2018)

EXCHANGE RATE USED IN BASIC FUEL PRICE



INTERNATIONAL PRODUCT PRICES OF BASKET USED IN BASIC FUEL PRICE



BASIC FUEL PRICE IN SA CENTS PER LITRE

