

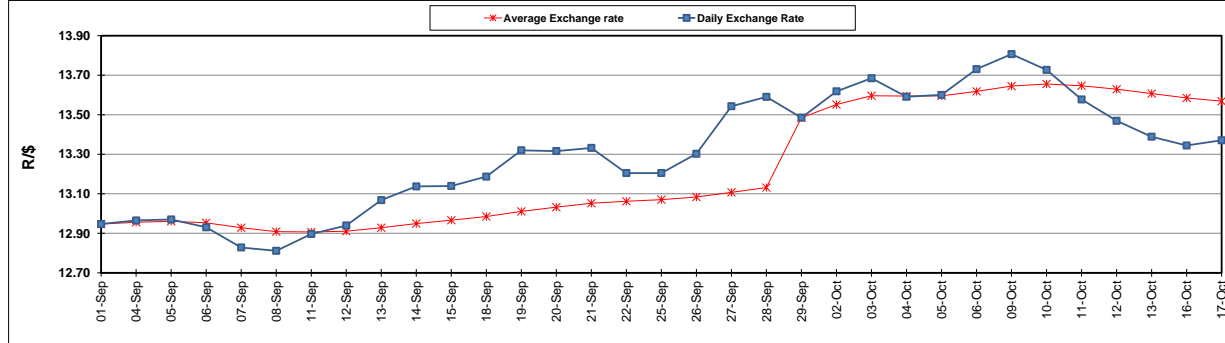
	PETROL 95 ULP	PETROL 93 ULP & LRP	DIESEL 0.05%	DIESEL 0.005%	ILL. PAR.
GAUTENG PUMP PRICE (SA c/l) AS FROM 04/10/2017	1 401.000	1 374.000	-	-	-
WHOLESALE PRICE (SA c/l) AS FROM 04/10/2017	-	-	1 212.330	1 217.730	771.088
SINGLE NATIONAL MAXIMUM RETAIL PRICE	-	-	-	-	992.000
BASIC FUEL PRICE - 17/10/2017 (SA c/l)	612.117	595.949	617.124	626.268	608.661
PRESS RELEASE CONTRIBUTION TO BFP 04/10/2017 - 17/10/2017 (SA c/l)	615.070	598.070	600.630	606.030	600.128
UNIT OVER/(UNDER) RECOVERY (SA c/l) - 17/10/2017	2.953	2.121	(16.494)	(20.238)	(8.533)
AVERAGE BASIC FUEL PRICE 29/09/2017 - 17/10/2017	609.461	593.161	613.051	622.752	608.435
AVERAGE UNIT OVER/(UNDER) RECOVERY 29/09/2017 - 17/10/2017	(1.083)	(0.860)	(22.113)	(26.415)	(17.307)

ANALYSIS MOVEMENT OF AVERAGE OVER/(UNDER) RECOVERY

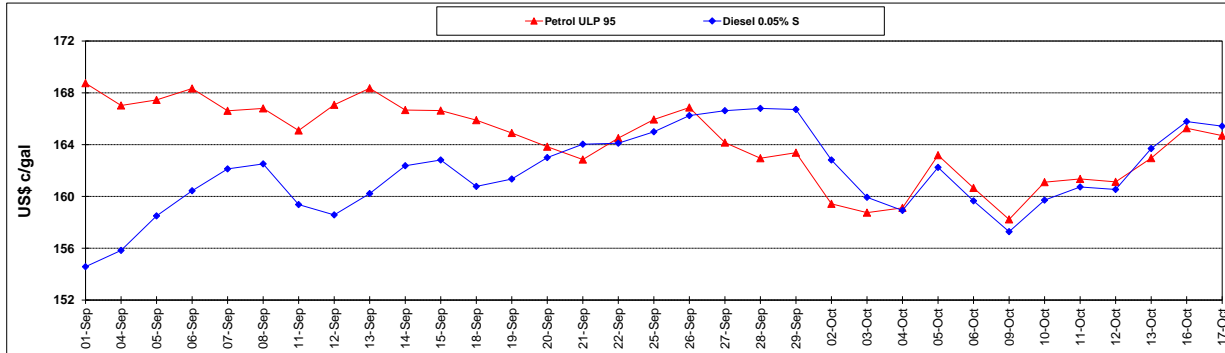
	PETROL 95	PETROL 93	DIESEL 0.05%	DIESEL 0.005%	ILL. PAR.
- MOVEMENT IN INTERNATIONAL PRODUCT PRICES	18.550	18.248	(2.364)	(6.353)	2.293
- MOVEMENT IN EXCHANGE RATE	(19.633)	(19.108)	(19.749)	(20.061)	(19.600)
AVERAGE UNIT OVER/(UNDER) RECOVERY 29/09/2017 - 17/10/2017	(1.083)	(0.860)	(22.113)	(26.415)	(17.307)

R/\$ EXCHANGE RATE - (R/\$ 13.3708 - 17/10/2017)

EXCHANGE RATE USED IN BASIC FUEL PRICE



INTERNATIONAL PRODUCT PRICES OF BASKET USED IN BASIC FUEL PRICE



BASIC FUEL PRICE IN SA CENTS PER LITRE

