

UPDATE OF THE BASIC FUEL PRICE

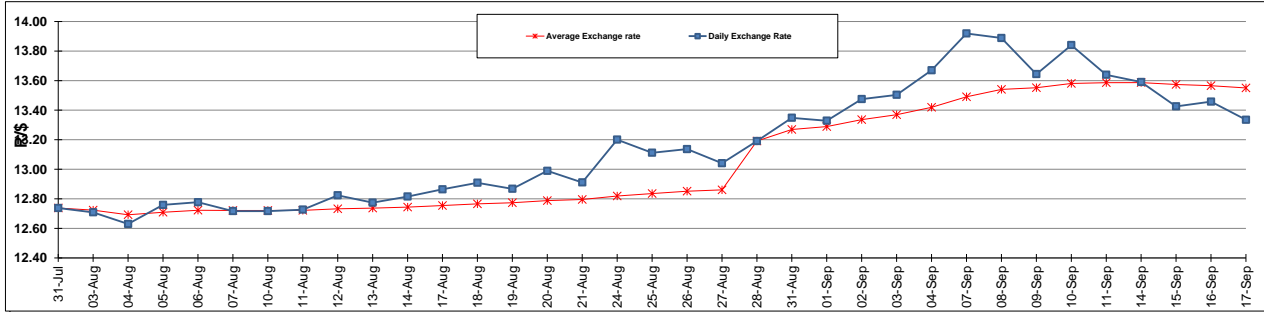
	PETROL 95 ULP	PETROL 93 ULP & LRP	DIESEL 0.05%	DIESEL 0.005%	ILL. PAR.
GAUTENG PUMP PRICE (SA c/l) AS FROM 02/09/2015	1,257.000	1,232.000	-	-	-
WHOLESALE PRICE (SA c/l) AS FROM 02/09/2015	-	-	1,040.970	1,049.370	661.828
SINGLE NATIONAL MAXIMUM RETAIL PRICE	-	-	-	-	847.000
BASIC FUEL PRICE - 17/09/2015 (SA c/l)	578.042	557.037	560.854	567.251	551.515
PRESS RELEASE CONTRIBUTION TO BFP 02/09/2015 - 17/09/2015 (SA c/l)	578.870	563.870	512.630	521.030	504.128
UNIT OVER/(UNDER) RECOVERY (SA c/l) - 17/09/2015	0.828	6.833	(48.224)	(46.221)	(47.387)
AVERAGE BASIC FUEL PRICE 28/08/2015 - 17/09/2015	593.566	571.300	573.455	580.186	562.385
AVERAGE UNIT OVER/(UNDER) RECOVERY 28/08/2015 - 17/09/2015	0.024	7.290	(50.025)	(48.956)	(47.257)

ANALYSIS MOVEMENT OF AVERAGE OVER/(UNDER) RECOVERY

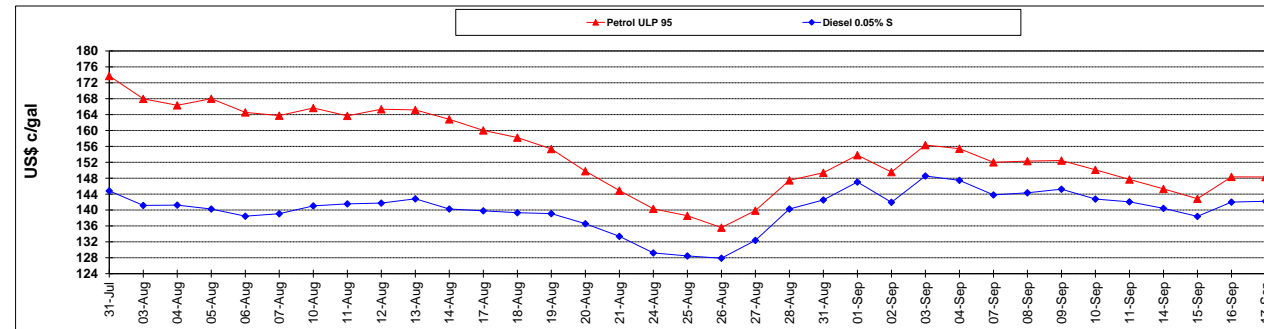
	PETROL 95	PETROL 93	DIESEL 0.05%	DIESEL 0.005%	ILL. PAR.
- MOVEMENT IN INTERNATIONAL PRODUCT PRICES	30.227	36.360	(20.845)	(19.434)	(18.641)
- MOVEMENT IN EXCHANGE RATE	(30.203)	(29.070)	(29.180)	(29.522)	(28.616)
AVERAGE UNIT OVER/(UNDER) RECOVERY 28/08/2015 - 17/09/2015	0.024	7.290	(50.025)	(48.956)	(47.257)

R/\$ EXCHANGE RATE - (R/\$ 13.3350 - 16/09/2015)

EXCHANGE RATE USED IN BASIC FUEL PRICE



INTERNATIONAL PRODUCT PRICES OF BASKET USED IN BASIC FUEL PRICE



BASIC FUEL PRICE IN SA CENTS PER LITRE

