

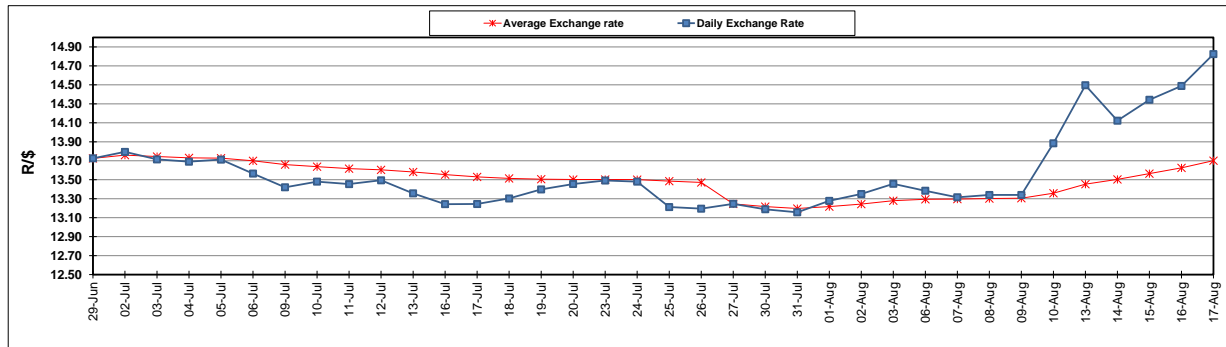
	PETROL 95 ULP	PETROL 93 ULP & LRP	DIESEL 0.05%	DIESEL 0.005%	ILL. PAR.
GAUTENG PUMP PRICE (SA c/l) AS FROM 04/08/2018	1 603.000	1 582.000	-	-	-
WHOLESALE PRICE (SA c/l) AS FROM 04/08/2018	-	-	1 440.830	1 445.230	953.088
SINGLE NATIONAL MAXIMUM RETAIL PRICE	-	-	-	-	1 233.000
BASIC FUEL PRICE - 17/08/2018 (SA c/l)	811.574	794.761	835.642	840.539	832.943
PRESS RELEASE CONTRIBUTION TO BFP 01/08/2018 - 17/08/2018 (SA c/l)	751.070	739.070	767.630	772.030	780.128
UNIT OVER/(UNDER) RECOVERY - 17/08/2018 (SA c/l)	(60.504)	(55.691)	(68.012)	(68.509)	(52.815)
AVERAGE BASIC FUEL PRICE 27/07/2018 - 17/08/2018	761.656	747.626	777.218	781.652	781.013
AVERAGE UNIT OVER/(UNDER) RECOVERY 27/06/2018 - 17/08/2018	(10.774)	(8.743)	(8.838)	(8.872)	(1.635)

### ANALYSIS MOVEMENT OF AVERAGE OVER/(UNDER) RECOVERY

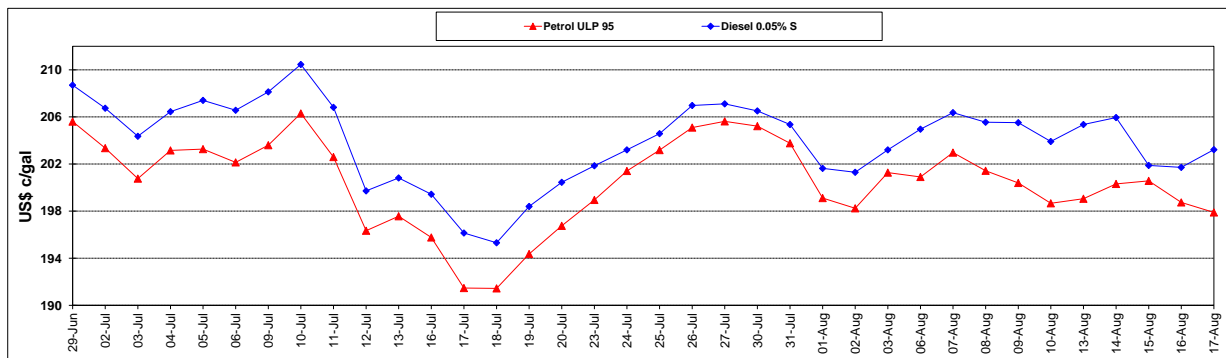
	PETROL 95	PETROL 93	DIESEL 0.05%	DIESEL 0.005%	ILL. PAR.
- MOVEMENT IN INTERNATIONAL PRODUCT PRICES	1.980	3.775	4.175	4.216	11.442
- MOVEMENT IN EXCHANGE RATE	(12.753)	(12.518)	(13.013)	(13.088)	(13.077)
AVERAGE UNIT OVER/(UNDER) RECOVERY 27/07/2018 - 17/08/2018	(10.774)	(8.743)	(8.838)	(8.872)	(1.635)

### R/\$ EXCHANGE RATE - (R/\$14.8243 - 17/08/2018)

#### EXCHANGE RATE USED IN BASIC FUEL PRICE



#### INTERNATIONAL PRODUCT PRICES OF BASKET USED IN BASIC FUEL PRICE



#### BASIC FUEL PRICE IN SA CENTS PER LITRE

