

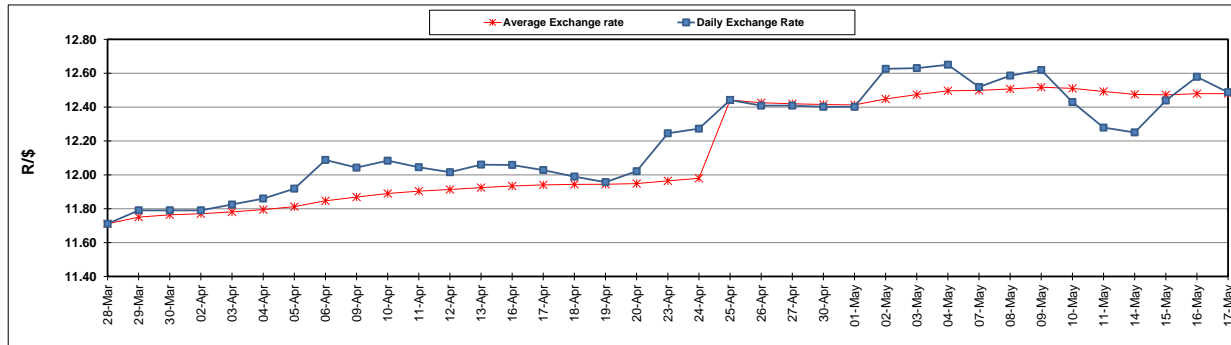
	PETROL 95 ULP	PETROL 93 ULP & LRP	DIESEL 0.05%	DIESEL 0.005%	ILL. PAR.
GAUTENG PUMP PRICE (SA c/l) AS FROM 02/05/2018	1 497.000	1 472.000	-	-	-
WHOLESALE PRICE (SA c/l) AS FROM 02/05/2018	-	-	1 333.830	1 338.230	845.088
SINGLE NATIONAL MAXIMUM RETAIL PRICE	-	-	-	-	1 089.000
BASIC FUEL PRICE - 17/05/2018 (SA c/l)	756.214	741.319	763.876	769.312	769.244
PRESS RELEASE CONTRIBUTION TO BFP 02/05/2018 - 17/05/2018 (SA c/l)	645.070	630.070	660.630	665.030	672.128
UNIT OVER/(UNDER) RECOVERY - 17/05/2018 (SA c/l)	(111.144)	(111.249)	(103.246)	(104.282)	(97.116)
AVERAGE BASIC FUEL PRICE 25/04/2018 - 17/05/2018	706.455	693.463	725.153	730.868	736.126
AVERAGE UNIT OVER/(UNDER) RECOVERY 25/04/2018 - 17/05/2018	(75.797)	(77.805)	(81.875)	(82.897)	(79.293)

ANALYSIS MOVEMENT OF AVERAGE OVER/(UNDER) RECOVERY

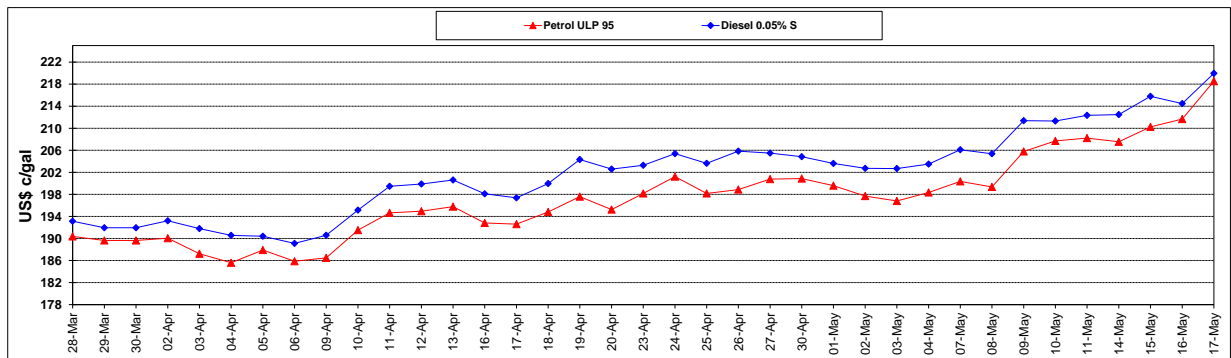
	PETROL 95	PETROL 93	DIESEL 0.05%	DIESEL 0.005%	ILL. PAR.
- MOVEMENT IN INTERNATIONAL PRODUCT PRICES	(47.493)	(50.021)	(52.823)	(53.615)	(49.799)
- MOVEMENT IN EXCHANGE RATE	(28.304)	(27.784)	(29.053)	(29.282)	(29.493)
AVERAGE UNIT OVER/(UNDER) RECOVERY 25/04/2018 - 17/05/2018	(75.797)	(77.805)	(81.875)	(82.897)	(79.293)

R/\$ EXCHANGE RATE - (R/\$12.4875 - 17/05/2018)

EXCHANGE RATE USED IN BASIC FUEL PRICE



INTERNATIONAL PRODUCT PRICES OF BASKET USED IN BASIC FUEL PRICE



BASIC FUEL PRICE IN SA CENTS PER LITRE

