

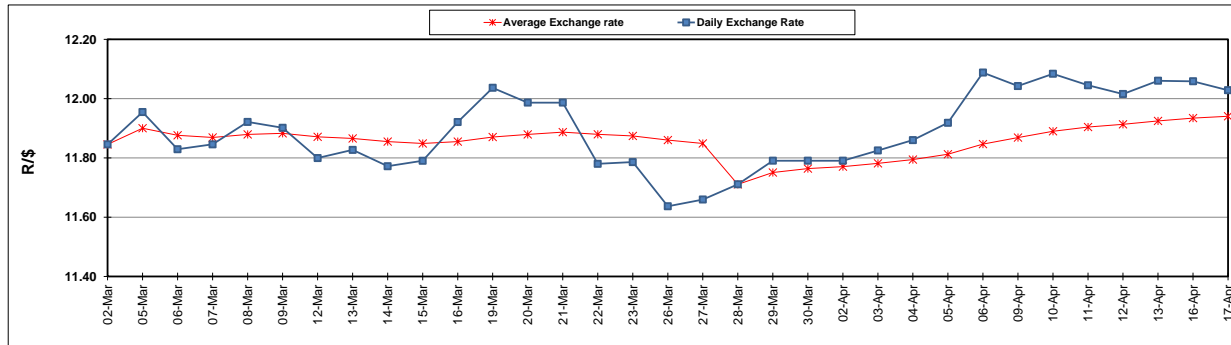
	PETROL 95 ULP	PETROL 93 ULP & LRP	DIESEL 0.05%	DIESEL 0.005%	ILL. PAR.
GAUTENG PUMP PRICE (SA c/l) AS FROM 07/03/2018	1 448.000	1 423.000	-	-	-
WHOLESALE PRICE (SA c/l) AS FROM 07/03/2018	-	-	1 274.830	1 280.230	793.088
SINGLE NATIONAL MAXIMUM RETAIL PRICE	-	-	-	-	1 026.000
BASIC FUEL PRICE - 17/04/2018 (SA c/l)	647.406	631.333	665.537	670.263	683.982
PRESS RELEASE CONTRIBUTION TO BFP 04/04/2018 - 17/04/2018 (SA c/l)	596.070	581.070	601.630	607.030	620.128
UNIT OVER/(UNDER) RECOVERY - 17/04/2018 (SA c/l)	(51.336)	(50.263)	(63.907)	(63.233)	(63.854)
AVERAGE BASIC FUEL PRICE 28/03/2018 - 17/04/2018	635.679	620.153	650.822	655.966	663.750
AVERAGE UNIT OVER/(UNDER) RECOVERY 28/03/2018 - 17/04/2018	(42.909)	(41.383)	(50.192)	(49.936)	(41.956)

### ANALYSIS MOVEMENT OF AVERAGE OVER/(UNDER) RECOVERY

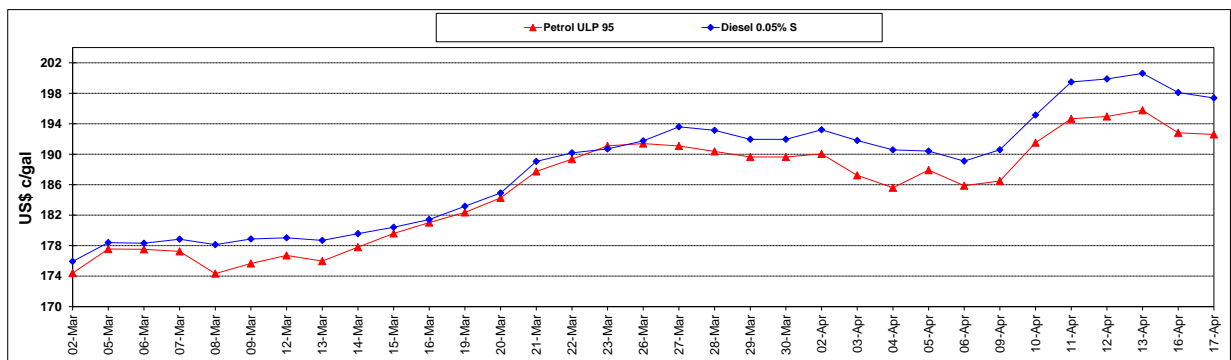
	PETROL 95	PETROL 93	DIESEL 0.05%	DIESEL 0.005%	ILL. PAR.
- MOVEMENT IN INTERNATIONAL PRODUCT PRICES	(38.032)	(36.626)	(45.199)	(44.904)	(36.863)
- MOVEMENT IN EXCHANGE RATE	(4.877)	(4.757)	(4.993)	(5.032)	(5.092)
AVERAGE UNIT OVER/(UNDER) RECOVERY 28/03/2018 - 17/04/2018	(42.909)	(41.383)	(50.192)	(49.936)	(41.956)

### R/\$ EXCHANGE RATE - (R/\$12.0283 - 17/04/2018)

#### EXCHANGE RATE USED IN BASIC FUEL PRICE



#### INTERNATIONAL PRODUCT PRICES OF BASKET USED IN BASIC FUEL PRICE



#### BASIC FUEL PRICE IN SA CENTS PER LITRE

