

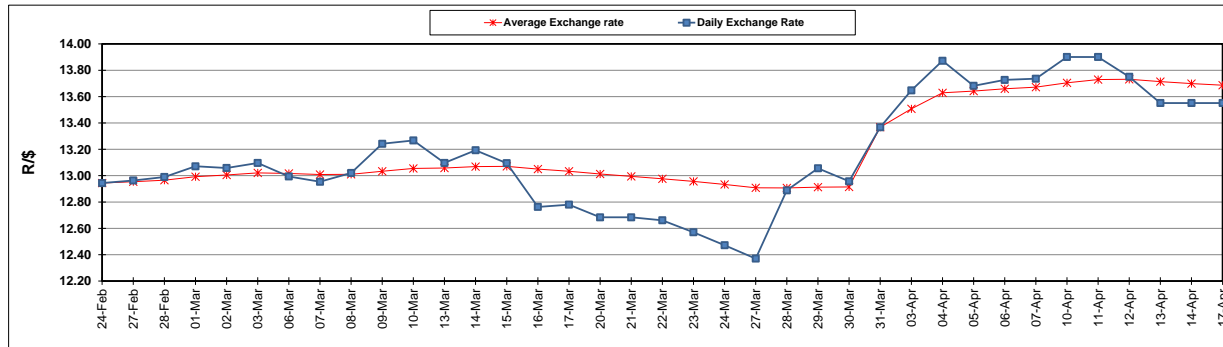
	PETROL 95 ULP	PETROL 93 ULP & LRP	DIESEL 0.05%	DIESEL 0.005%	ILL. PAR.
GAUTENG PUMP PRICE (SA c/l) AS FROM 05/04/2017	1 330.000	1 308.000	-	-	-
WHOLESALE PRICE (SA c/l) AS FROM 05/04/2017	-	-	1 150.330	1 152.730	702.088
SINGLE NATIONAL MAXIMUM RETAIL PRICE	-	-	-	-	901.000
BASIC FUEL PRICE - 17/04/2017 (SA c/l)	619.406	604.906	593.672	597.916	588.402
PRESS RELEASE CONTRIBUTION TO BFP 05/04/2017 - 17/04/2017 (SA c/l)	548.670	536.670	538.630	541.030	531.128
UNIT OVER/(UNDER) RECOVERY (SA c/l) - 17/04/2017	(70.736)	(68.236)	(55.042)	(56.886)	(57.274)
AVERAGE BASIC FUEL PRICE 31/03/2017 - 17/04/2017	619.616	602.977	588.551	592.624	585.530
AVERAGE UNIT OVER/(UNDER) RECOVERY 31/03/2017- 17/04/2017	(54.896)	(50.757)	(37.421)	(39.094)	(41.402)

ANALYSIS MOVEMENT OF AVERAGE OVER/(UNDER) RECOVERY

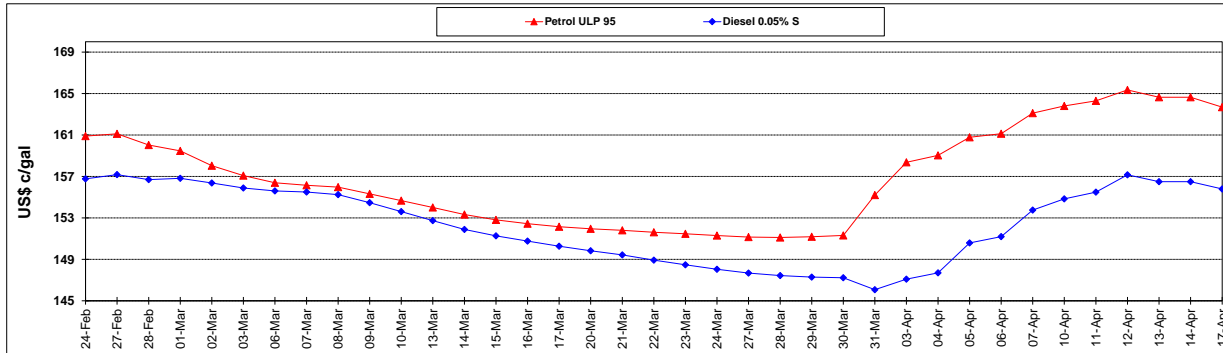
	PETROL 95	PETROL 93	DIESEL 0.05%	DIESEL 0.005%	ILL. PAR.
- MOVEMENT IN INTERNATIONAL PRODUCT PRICES	(19.955)	(16.755)	(4.232)	(5.675)	(8.383)
- MOVEMENT IN EXCHANGE RATE	(34.941)	(34.002)	(33.189)	(33.419)	(33.019)
AVERAGE UNIT OVER/(UNDER) RECOVERY 31/03/2017 - 17/04/2017	(54.896)	(50.757)	(37.421)	(39.094)	(41.402)

R/\$ EXCHANGE RATE - (R/\$ 13.5515 - 17/04/2017)

EXCHANGE RATE USED IN BASIC FUEL PRICE



INTERNATIONAL PRODUCT PRICES OF BASKET USED IN BASIC FUEL PRICE



BASIC FUEL PRICE IN SA CENTS PER LITRE

