

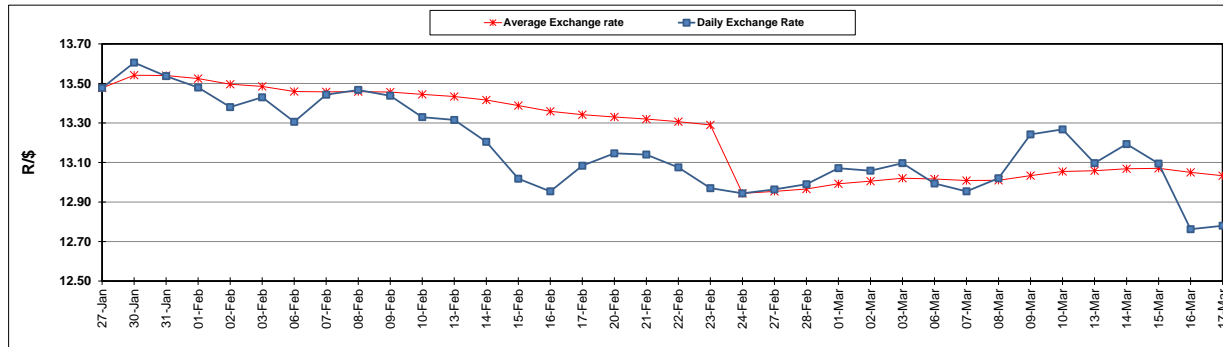
	PETROL 95 ULP	PETROL 93 ULP & LRP	DIESEL 0.05%	DIESEL 0.005%	ILL. PAR.
GAUTENG PUMP PRICE (SA c/l) AS FROM 01/03/2017	1 354.000	1 330.000	-	-	-
WHOLESALE PRICE (SA c/l) AS FROM 01/03/2017	-	-	1 160.830	1 163.230	750.588
SINGLE NATIONAL MAXIMUM RETAIL PRICE	-	-	-	-	966.000
BASIC FUEL PRICE - 17/03/2017 (SA c/l)	532.734	520.882	518.699	521.553	511.914
PRESS RELEASE CONTRIBUTION TO BFP 01/03/2017 - 17/03/2017 (SA c/l)	612.870	598.870	588.630	591.030	583.128
UNIT OVER/(UNDER) RECOVERY (SA c/l) - 17/03/2017	80.136	77.988	69.931	69.477	71.214
AVERAGE BASIC FUEL PRICE 24/02/2017 - 17/03/2017	558.141	546.393	554.379	557.294	546.486
AVERAGE UNIT OVER/(UNDER) RECOVERY 24/02/2017- 17/03/2017	56.229	53.978	34.627	34.111	38.142

ANALYSIS MOVEMENT OF AVERAGE OVER/(UNDER) RECOVERY

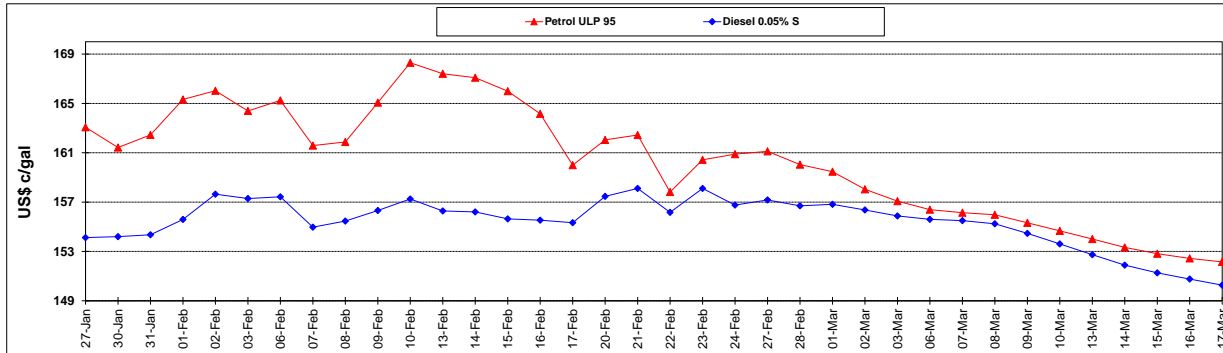
	PETROL 95	PETROL 93	DIESEL 0.05%	DIESEL 0.005%	ILL. PAR.
- MOVEMENT IN INTERNATIONAL PRODUCT PRICES	58.927	56.618	37.306	36.805	40.784
- MOVEMENT IN EXCHANGE RATE	(2.698)	(2.641)	(2.680)	(2.694)	(2.642)
AVERAGE UNIT OVER/(UNDER) RECOVERY 24/02/2017 - 17/03/2017	56.229	53.978	34.627	34.111	38.142

R/\$ EXCHANGE RATE - (R/\$ 12.7800 - 17/03/2017)

EXCHANGE RATE USED IN BASIC FUEL PRICE



INTERNATIONAL PRODUCT PRICES OF BASKET USED IN BASIC FUEL PRICE



BASIC FUEL PRICE IN SA CENTS PER LITRE

