

## UPDATE OF THE BASIC FUEL PRICE

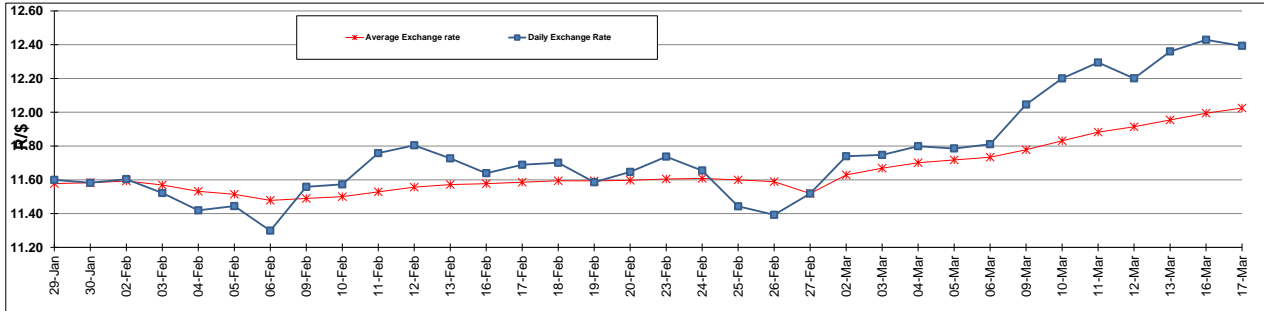
	PETROL 95 ULP	PETROL 93 ULP & LRP	DIESEL 0.05%	DIESEL 0.005%	ILL. PAR.
GAUTENG PUMP PRICE (SA c/l) AS FROM 04/03/2015	1,127.000	1,105.000	-	-	-
WHOLESALE PRICE (SA c/l) AS FROM 04/03/2015	-	-	1,000.090	1,004.490	718.928
SINGLE NATIONAL MAXIMUM RETAIL PRICE	-	-	-	-	931.000
BASIC FUEL PRICE - 17/03/2015 (SA c/l)	584.274	564.445	567.013	574.381	560.129
PRESS RELEASE CONTRIBUTION TO BFP 04/03/2015 - 17/03/2015 (SA c/l)	536.250	524.250	554.630	559.030	564.128
UNIT OVER/(UNDER) RECOVERY (SA c/l) - 17/03/2015	(48.024)	(40.195)	(12.383)	(15.351)	3.999
AVERAGE BASIC FUEL PRICE 27/02/2015 - 17/03/2015	605.065	587.605	592.787	598.214	582.941
AVERAGE UNIT OVER/(UNDER) RECOVERY 27/02/2015 - 17/03/2015	(90.969)	(85.509)	(55.234)	(56.261)	(35.659)

### ANALYSIS MOVEMENT OF AVERAGE OVER/(UNDER) RECOVERY

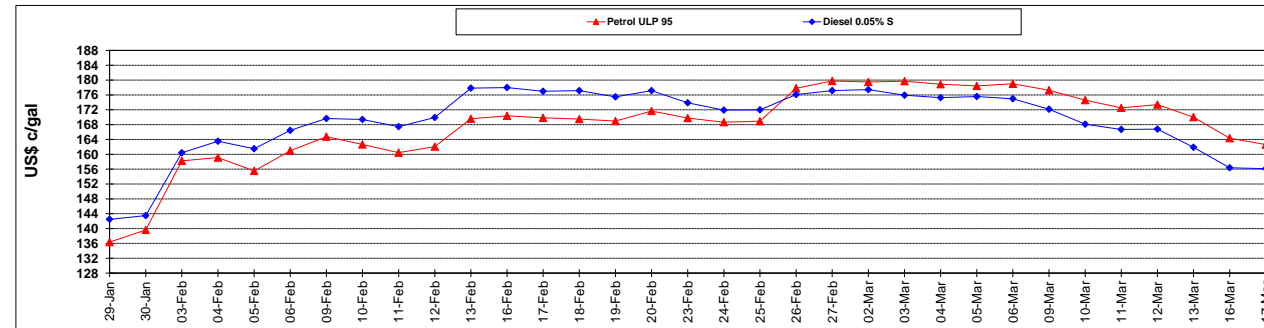
	PETROL 95	PETROL 93	DIESEL 0.05%	DIESEL 0.005%	ILL. PAR.
- MOVEMENT IN INTERNATIONAL PRODUCT PRICES	(69.031)	(64.204)	(33.741)	(34.571)	(14.523)
- MOVEMENT IN EXCHANGE RATE	(21.938)	(21.305)	(21.493)	(21.690)	(21.136)
AVERAGE UNIT OVER/(UNDER) RECOVERY 27/02/2015 - 17/03/2015	(90.969)	(85.509)	(55.234)	(56.261)	(35.659)

**R/\$ EXCHANGE RATE - (R/\$ 12.3931 - 17/03/2015)**

### EXCHANGE RATE USED IN BASIC FUEL PRICE



### INTERNATIONAL PRODUCT PRICES OF BASKET USED IN BASIC FUEL PRICE



### BASIC FUEL PRICE IN SA CENTS PER LITRE

