

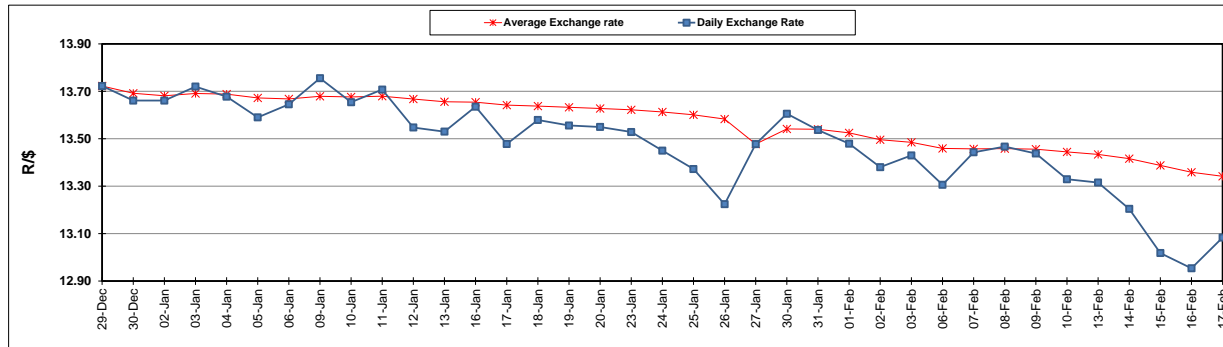
	PETROL 95 ULP	PETROL 93 ULP & LRP	DIESEL 0.05%	DIESEL 0.005%	ILL. PAR.
GAUTENG PUMP PRICE (SA c/l) AS FROM 01/02/2017	1 362.000	1 338.000	-	-	-
WHOLESALE PRICE (SA c/l) AS FROM 01/02/2017	-	-	1 162.830	1 165.230	758.588
SINGLE NATIONAL MAXIMUM RETAIL PRICE	-	-	-	-	976.000
BASIC FUEL PRICE - 17/02/2017 (SA c/l)	587.998	578.507	574.586	577.429	570.123
PRESS RELEASE CONTRIBUTION TO BFP 01/02/2017 - 17/02/2017 (SA c/l)	620.870	606.870	590.630	593.030	591.128
UNIT OVER/(UNDER) RECOVERY (SA c/l) - 17/02/2017	32.872	28.363	16.044	15.601	21.005
AVERAGE BASIC FUEL PRICE 27/01/2017 - 17/02/2017	614.050	599.377	586.802	589.212	581.101
AVERAGE UNIT OVER/(UNDER) RECOVERY 27/01/2017- 17/02/2017	1.382	2.055	(0.109)	(0.119)	6.840

ANALYSIS MOVEMENT OF AVERAGE OVER/(UNDER) RECOVERY

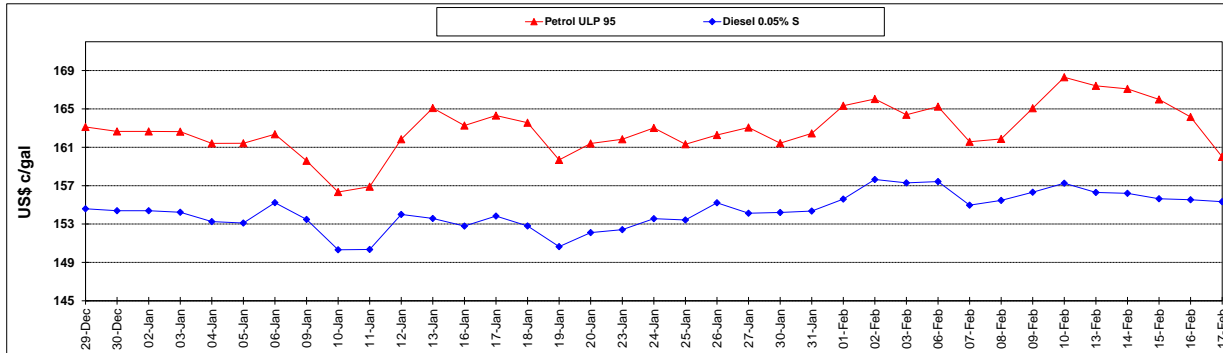
	PETROL 95	PETROL 93	DIESEL 0.05%	DIESEL 0.005%	ILL. PAR.
- MOVEMENT IN INTERNATIONAL PRODUCT PRICES	(9.727)	(8.789)	(10.726)	(10.780)	(3.674)
- MOVEMENT IN EXCHANGE RATE	11.110	10.845	10.617	10.661	10.514
AVERAGE UNIT OVER/(UNDER) RECOVERY 27/01/2017 - 17/02/2017	1.382	2.055	(0.109)	(0.119)	6.840

R/\$ EXCHANGE RATE - (R/\$ 13.0835- 17/02/2017)

EXCHANGE RATE USED IN BASIC FUEL PRICE



INTERNATIONAL PRODUCT PRICES OF BASKET USED IN BASIC FUEL PRICE



BASIC FUEL PRICE IN SA CENTS PER LITRE

