

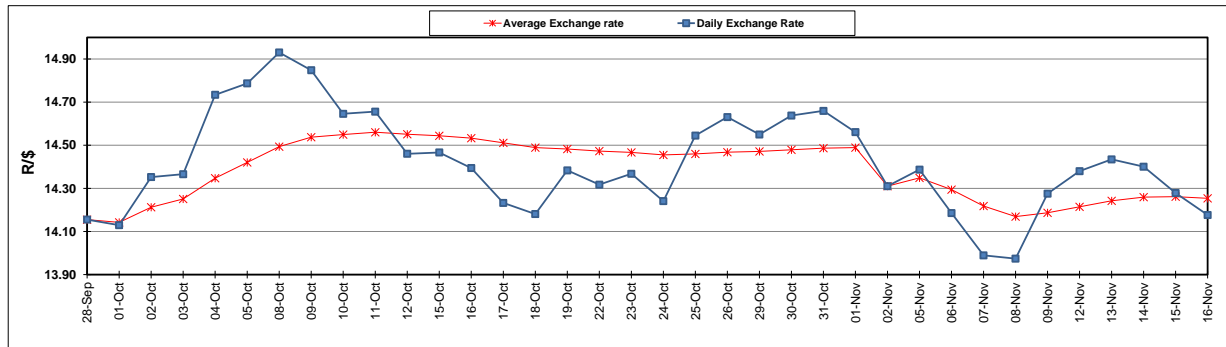
	PETROL 95 ULP	PETROL 93 ULP & LRP	DIESEL 0.05%	DIESEL 0.005%	ILL. PAR.
GAUTENG PUMP PRICE (SA c/l) AS FROM 07/11/2018	1 708.000	1 685.000	-	-	-
WHOLESALE PRICE (SA c/l) AS FROM 07/11/2018	-	-	1 612.750	1 620.150	1 085.088
SINGLE NATIONAL MAXIMUM RETAIL PRICE	-	-	-	-	1 409.000
BASIC FUEL PRICE - 16/11/2018 (SA c/l)	646.417	636.867	779.002	786.190	786.470
PRESS RELEASE CONTRIBUTION TO BFP 07/11/2018 - 16/11/2018 (SA c/l)	829.250	816.250	917.630	925.030	912.128
UNIT OVER/(UNDER) RECOVERY - 16/11/2018 (SA c/l)	182.833	179.383	138.628	138.840	125.658
AVERAGE BASIC FUEL PRICE 02/11/2018 - 16/11/2018	676.055	666.371	811.109	817.449	812.739
AVERAGE UNIT OVER/(UNDER) RECOVERY 02/11/2018 - 16/11/2018	159.173	155.857	99.431	99.671	91.752

ANALYSIS MOVEMENT OF AVERAGE OVER/(UNDER) RECOVERY

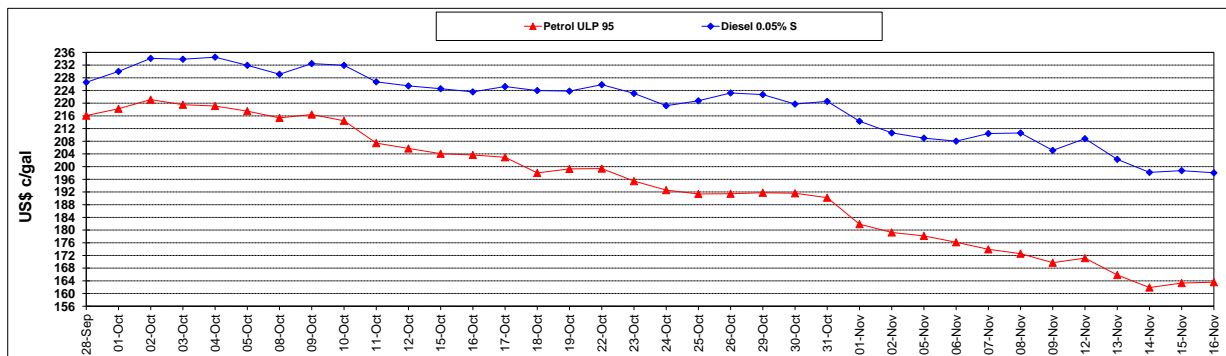
	PETROL 95	PETROL 93	DIESEL 0.05%	DIESEL 0.005%	ILL. PAR.
- MOVEMENT IN INTERNATIONAL PRODUCT PRICES	148.008	144.852	86.035	86.172	78.331
- MOVEMENT IN EXCHANGE RATE	11.165	11.005	13.395	13.500	13.422
AVERAGE UNIT OVER/(UNDER) RECOVERY 02/11/2018 - 16/11/2018	159.173	155.857	99.431	99.671	91.752

R/\$ EXCHANGE RATE - (R/\$14.1765 - 16/11/2018)

EXCHANGE RATE USED IN BASIC FUEL PRICE



INTERNATIONAL PRODUCT PRICES OF BASKET USED IN BASIC FUEL PRICE



BASIC FUEL PRICE IN SA CENTS PER LITRE

