

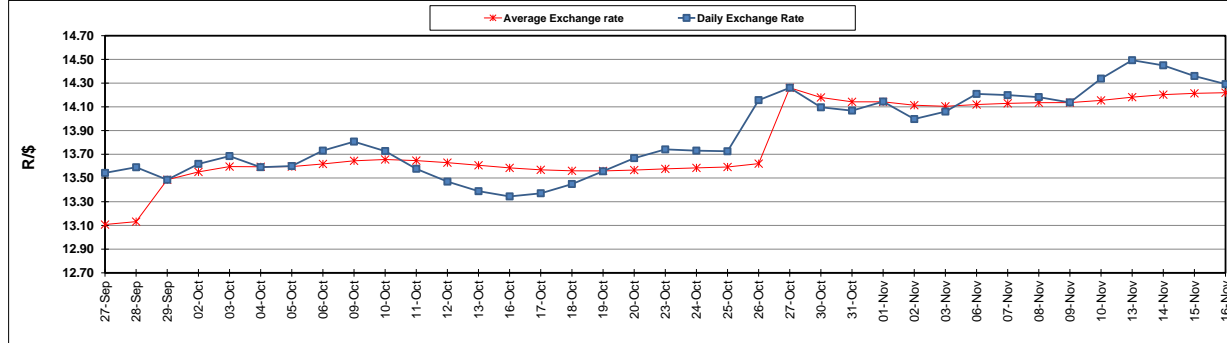
	PETROL 95 ULP	PETROL 93 ULP & LRP	DIESEL 0.05%	DIESEL 0.005%	ILL. PAR.
GAUTENG PUMP PRICE (SA c/l) AS FROM 01/11/2017	1 405.000	1 378.000	-	-	-
WHOLESALE PRICE (SA c/l) AS FROM 01/11/2017	-	-	1 235.330	1 244.730	792.088
SINGLE NATIONAL MAXIMUM RETAIL PRICE	-	-	-	-	1 021.000
BASIC FUEL PRICE -16/11/2017 (SA c/l)	686.391	672.300	693.813	697.827	700.575
PRESS RELEASE CONTRIBUTION TO BFP 01/11/2017 - 16/11/2017 (SA c/l)	619.070	602.070	623.630	633.030	621.128
UNIT OVER/(UNDER) RECOVERY (SA c/l) - 16/11/2017	(67.321)	(70.230)	(70.183)	(64.797)	(79.447)
AVERAGE BASIC FUEL PRICE 27/10/2017 - 16/11/2017	691.482	675.670	682.670	689.449	692.678
AVERAGE UNIT OVER/(UNDER) RECOVERY 27/10/2017 - 16/11/2017	(73.212)	(74.400)	(63.640)	(61.819)	(75.750)

ANALYSIS MOVEMENT OF AVERAGE OVER/(UNDER) RECOVERY

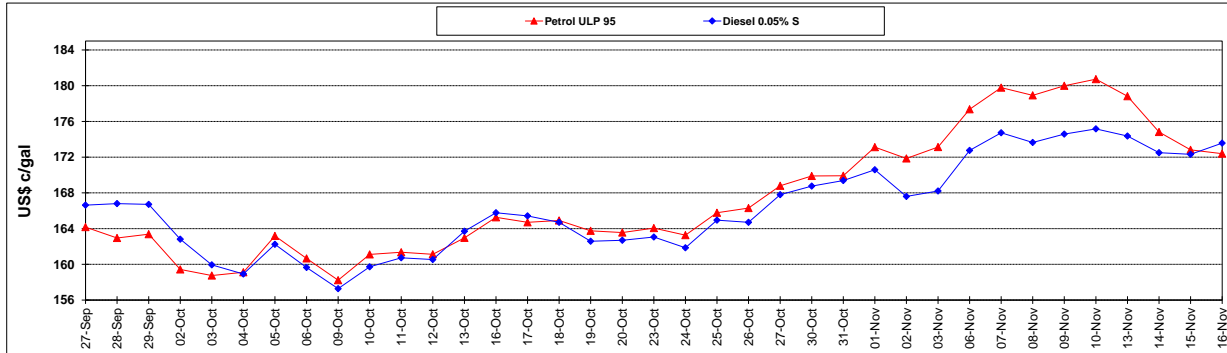
	PETROL 95	PETROL 93	DIESEL 0.05%	DIESEL 0.005%	ILL. PAR.
- MOVEMENT IN INTERNATIONAL PRODUCT PRICES	(44.126)	(45.979)	(34.925)	(32.819)	(46.614)
- MOVEMENT IN EXCHANGE RATE	(29.086)	(28.421)	(28.715)	(29.000)	(29.136)
AVERAGE UNIT OVER/(UNDER) RECOVERY 27/10/2017 - 16/11/2017	(73.212)	(74.400)	(63.640)	(61.819)	(75.750)

R/\$ EXCHANGE RATE - (R/\$ 14.2918 - 16/11/2017)

EXCHANGE RATE USED IN BASIC FUEL PRICE



INTERNATIONAL PRODUCT PRICES OF BASKET USED IN BASIC FUEL PRICE



BASIC FUEL PRICE IN SA CENTS PER LITRE

