

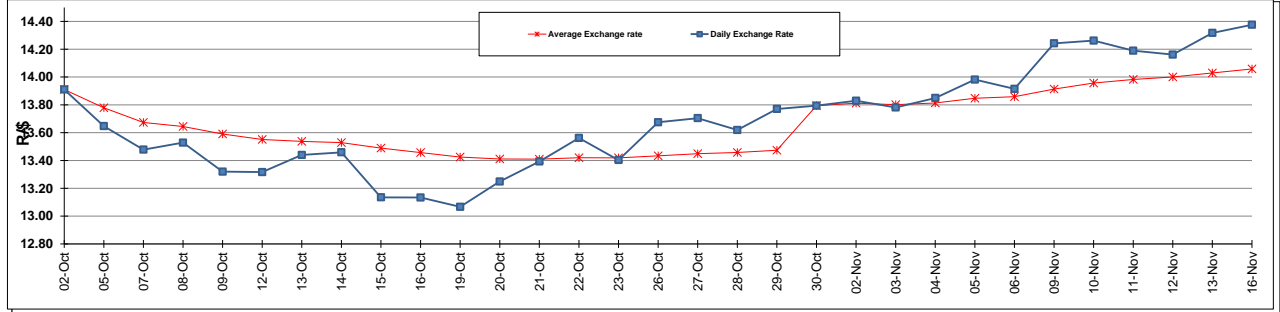
	PETROL 95 ULP	PETROL 93 ULP & LRP	DIESEL 0.05%	DIESEL 0.005%	ILL. PAR.
GAUTENG PUMP PRICE (SA c/l) AS FROM 04/11/2015	1,239.000	1,208.000	-	-	-
WHOLESALE PRICE (SA c/l) AS FROM 04/11/2015	-	-	1,084.970	1,090.370	709.828
SINGLE NATIONAL MAXIMUM RETAIL PRICE	-	-	-	-	911.000
BASIC FUEL PRICE - 16/11/2015 (SA c/l)	544.286	527.086	541.526	547.754	535.335
PRESS RELEASE CONTRIBUTION TO BFP 04/11/2015 - 16/11/2015 (SA c/l)	560.870	539.870	556.630	562.030	552.128
UNIT OVER/(UNDER) RECOVERY (SA c/l) - 16/11/2015	16.584	12.784	15.104	14.276	16.793
AVERAGE BASIC FUEL PRICE 30/10/2015 - 16/11/2015	563.039	547.653	560.204	568.022	557.657
AVERAGE UNIT OVER/(UNDER) RECOVERY 30/10/2015 - 16/11/2015	3.331	(2.283)	(1.324)	(3.492)	(5.029)

ANALYSIS MOVEMENT OF AVERAGE OVER/(UNDER) RECOVERY

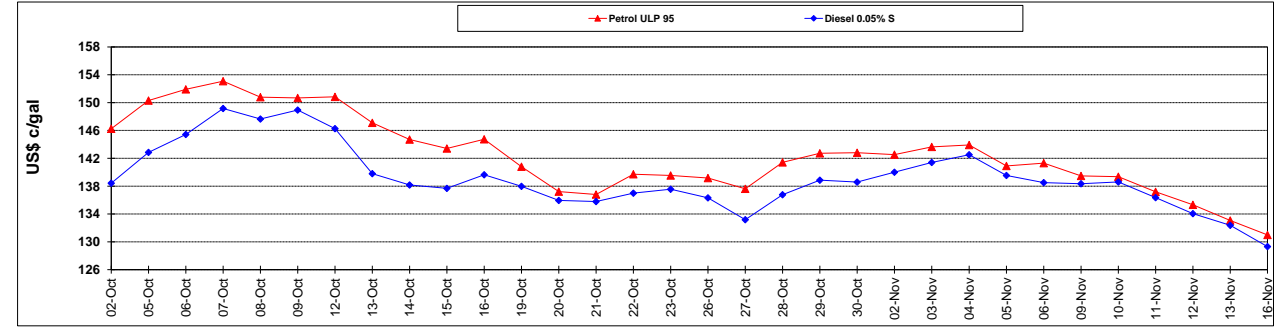
	PETROL 95	PETROL 93	DIESEL 0.05%	DIESEL 0.005%	ILL. PAR.
- MOVEMENT IN INTERNATIONAL PRODUCT PRICES	26.753	20.499	21.980	20.137	18.169
- MOVEMENT IN EXCHANGE RATE	(23.422)	(22.782)	(23.304)	(23.629)	(23.198)
AVERAGE UNIT OVER/(UNDER) RECOVERY 30/10/2015 - 16/11/2015	3.331	(2.283)	(1.324)	(3.492)	(5.029)

R/\$ EXCHANGE RATE - (R/\$ 14.3759 - 16/11/2015)

EXCHANGE RATE USED IN BASIC FUEL PRICE



INTERNATIONAL PRODUCT PRICES OF BASKET USED IN BASIC FUEL PRICE



BASIC FUEL PRICE IN SA CENTS PER LITRE

